

VEHICLE INSTALLATION INSTRUCTIONS:  
CHEV/GMC 4x4: 2020 & NEWER 2500/3500  
SILVERADO/SIERRA

Hiniker Company  
58766 240th St.  
Mankato, MN 56001

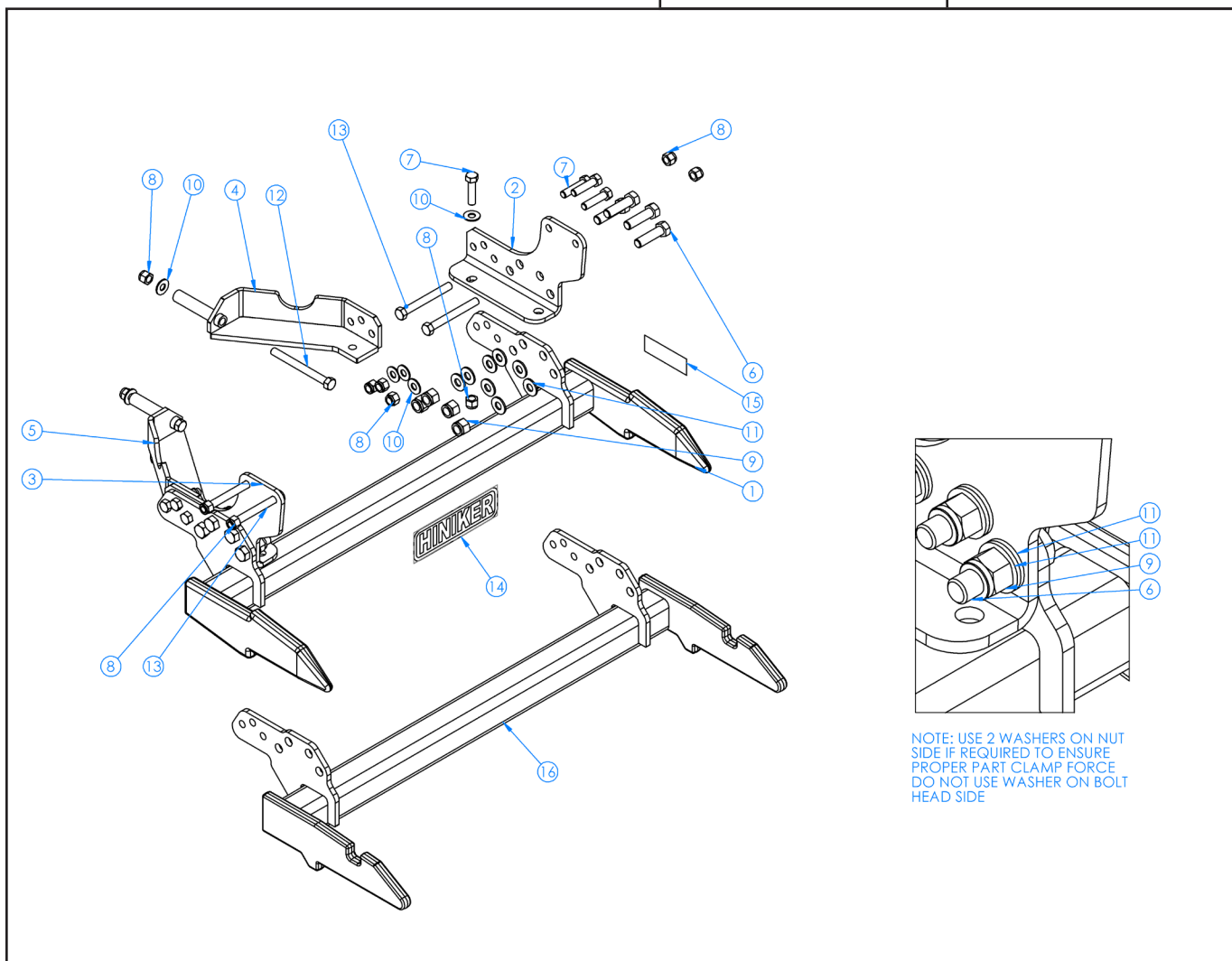
INSTRUCTION SHEET NO: 25014101 rev. C

November 13, 2024



**IMPORTANT:** Read the Snowplow Operator's Manual before assembling this kit.

MINIMUM VEHICLE RECOMMENDATIONS	REAR BALLAST - 500 lbs. when plow is attached. Secure Weight Behind Rear Wheels.
MFR Snowplow Prep Package	



NOTE: USE 2 WASHERS ON NUT SIDE IF REQUIRED TO ENSURE PROPER PART CLAMP FORCE. DO NOT USE WASHER ON BOLT HEAD SIDE.

QH1 Mount Kit 25014990  
QH2 Mount Kit 25014992

DWG. NO. 7765

REF. NO.	PART NUMBER	DESCRIPTION	QTY.	REF. NO.	PART NUMBER	DESCRIPTION	QTY.
1	25014994	WELD - PRONG (GM 19+) QH2	1	10	952-003-004	WASHER 1/2 SAE	10
2	25014998	LH FRONT BRACKET (GM 19+) QH1/QH2	1	11	952-003-003	SAE WASHER 5/8 PLT	16
3	25015000	RH FRONT BRACKET (GM 19+) QH1/QH2	1	12	950-001-226	HHCS 1/2-13NCX5 1/2 G#5 PLT	2
4	25015002	LH REAR BRACKET (GM 19+) QH1/QH2	1	13	950-001-126	HHCS 1/2-13UNCX4 1/2 G5 PLT	4
5	25015004	RH REAR BRACKET (GM 19+) QH1/QH2	1	14	25010008	HINIKER DECAL	1
6	950-001-185	HHCS 5/8-11 X 2 1/4 GR 5 PLT	8	15	25015013	ID LABEL 2020 & NEWER GM K2500 QH2	1
7	950-001-112	HHCS 1/2-13 UNC X 2 GR 5	8	16	25014996	PRONG (GM 19+) QH1	1
8	951-003-009	HEX NUT 1/2-13 UNC NYLON INSERT	14	17	25014354	Parts Bag Mt Kit GM &NW25 2500	1
9	060756	LOCK NUT 5/8-11 NYL INS	8	18	25015006	ID LABEL 2020 & NEWER GM K2500 QH1	1

All hardware should be tightened only enough to ensure safety during assembly. Fully tighten all hardware after entire assembly is completed.

**GRADE 5 TYPE B & F LOCK NUT TORQUE VALUES**

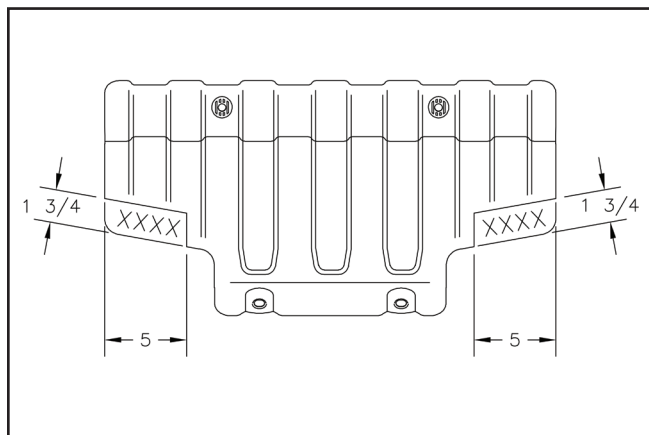
Size	Ft-lbs.	N-m
5/16"	13-18	17-25
3/8"	23-33	31-44
1/2"	58-82	79-112
5/8"	117-165	158-223

**GRADE 5 BOLT TORQUE VALUES\***

Size	Ft-lbs.	N-m
1/4"	8-12	11-16
3/8"	29-41	39-56
1/2"	73-103	99-140
5/8"	146-206	198-279

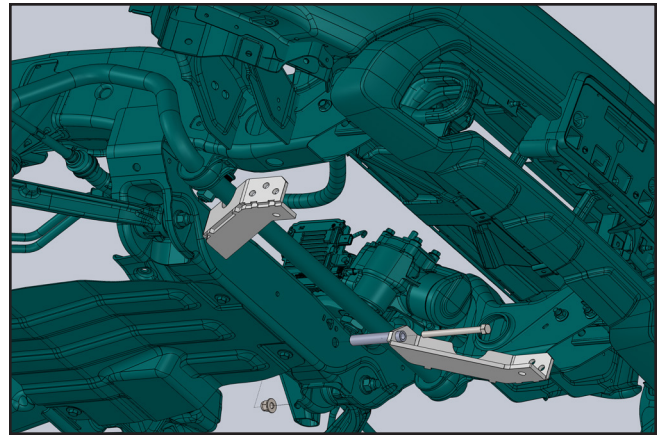
\* applications without lock nuts

1. Prepare the truck for installation of the mount kit, as follows:
  - Detach the lower lip of the front bumper and return to vehicle owner with hardware. This will not be reinstalled.
  - Remove the front splash shield from behind the front bumper by unscrewing four bolts. Trim edges as illustrated.



DWG. NO. 7766

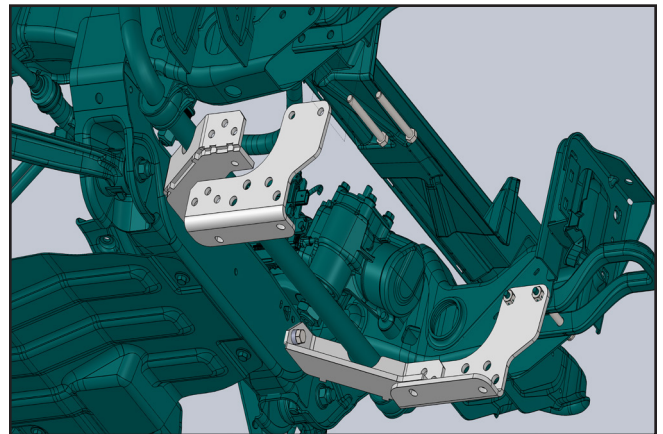
2. Identify the LH and RH rear bracket weldments. Insert a 1/2 inch x 5 1/4 inch hex bolt through the spacer bushing of each bracket from the front side of the bracket.



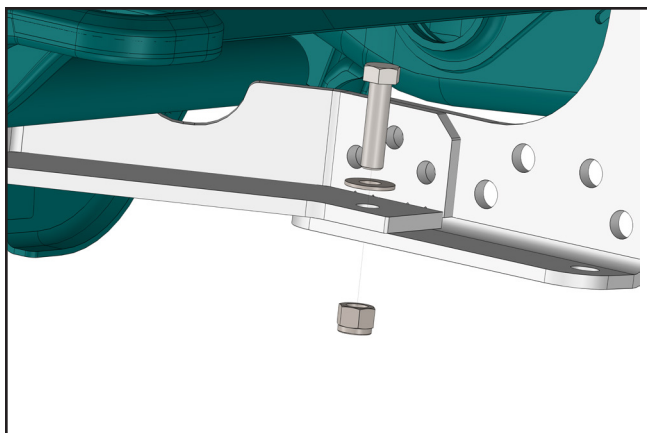
DWG. NO. 111696

Slip spacer bushings through holes in the vehicle crossmember and loosely secure with 1/2 inch flat washers and nylon insert lock nuts from the bolt bag.

3. Lift front bracket approx. into place. One bolt at a time, replace tow hook bolts with longer 1/2 inch x 4 1/2 inch grade 8 bolts supplied with the mount kit. Insert bolt through front plate frame and tow hook, secure with nylon insert lock nuts.

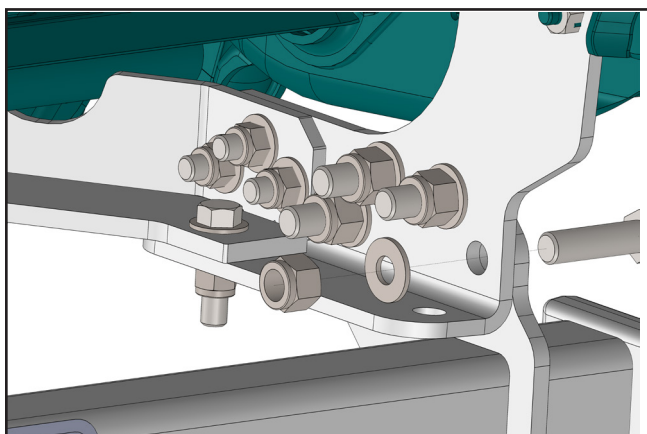


DWG. NO. 111694



DWG. NO. 111695

Fasten rear brackets to front brackets by first inserting a 1/2 inch x 1 1/2 inch hex bolt with a flat washer under its head from the top down through holes in brackets. Secure with nylon insert lock nuts.



DWG. NO. 111697

4. Lift prong weld into place and fit bolt through to hang in place.
5. Install 5/8-11 and 1/2-13 bolts through all plates, USE WASHER and lock nut. Note bolts are long so the plates bear on the bolt shank instead of the thread. Do not replace with fully threaded bolts, use an additional washer if needed to take up bolt slack. Washers should be added on nut side.
6. Fully tighten all hardware.
7. Reinstall splash shield.