

VEHICLE INSTALLATION INSTRUCTIONS:
 CHEV/GMC 4x4: 2020 & NEWER 2500/3500
 SILVERADO/SIERRA

Hiniker Company
 58766 240th St.
 Mankato, MN 56001

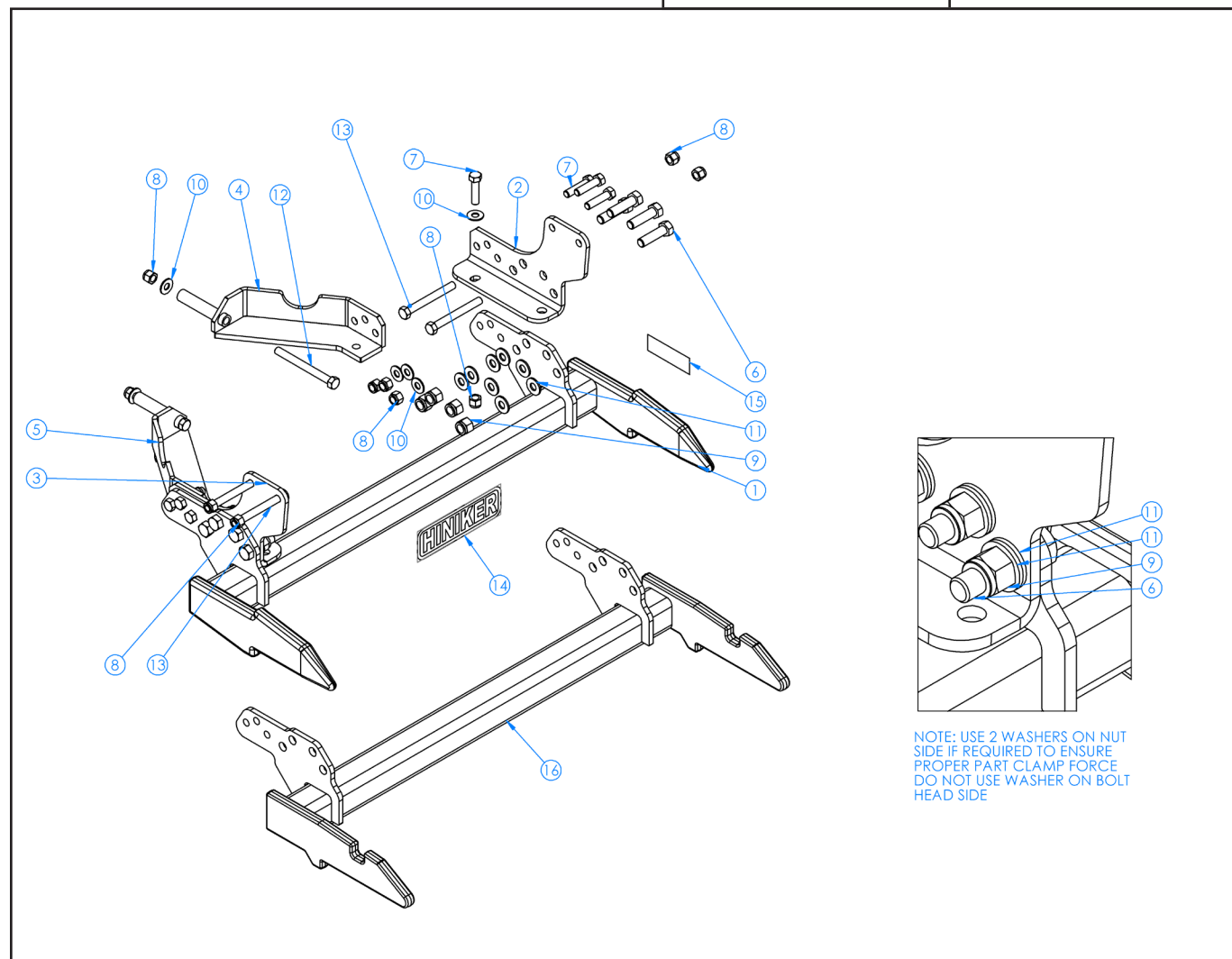
INSTRUCTION SHEET NO: 25014101 rev. C

September 27, 2023



IMPORTANT: Read the Snowplow Operator's Manual before assembling this kit.

MINIMUM VEHICLE RECOMMENDATIONS	REAR BALLAST - 500 lbs. when plow is attached. Secure Weight Behind Rear Wheels.
MFR Snowplow Prep Package	



NOTE: USE 2 WASHERS ON NUT SIDE IF REQUIRED TO ENSURE PROPER PART CLAMP FORCE. DO NOT USE WASHER ON BOLT HEAD SIDE.

Mount Kit 25014093
 QH2 Mount Kit 25014094

DWG. NO. 7765

PART NUMBER	DESCRIPTION	PART NUMBER	DESCRIPTION
1	25014095 Prong Weldment QH2	9	Lock Nut 5/8-11 Nylon Insert
2	LH Front Bracket	10	SAE Flat Washer 1/2 Inch
3	RH Front Bracket	11	SAE Flat Washer 5/8 Inch
4	LH Rear Bracket Weldment	12	Hex Head Cap Screw 1/2-13 x 5 1/4 Gr.8
5	RH Rear Bracket Weldment	13	Hex Head Cap Screw 1/2-13 x 4 1/2 Gr. 8
6	Hex Head Cap Screw 5/8-11 x 2 1/4 Gr.5	14	25010008 Hiniker Decal
7	Hex Head Cap Screw 1/2-13 x 2 Gr.5	15	25014102 ID Label 2020 & Newer GM K2500
8	Lock Nut 1/2-13 Nylon Insert	16	25014096 Prong Weldment QH1
		17	25012829 Bolt Bag

All hardware should be tightened only enough to ensure safety during assembly. Fully tighten all hardware after entire assembly is completed.

GRADE 5 TYPE B & F LOCK NUT TORQUE VALUES

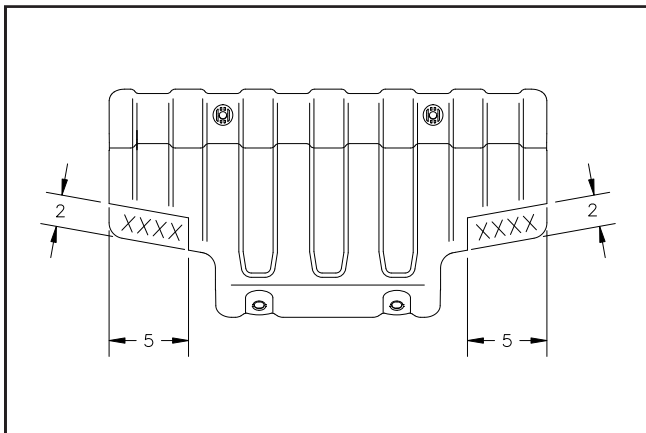
Size	Ft-lbs.	N-m
5/16"	13-18	17-25
3/8"	23-33	31-44
1/2"	58-82	79-112
5/8"	117-165	158-223

GRADE 5 BOLT TORQUE VALUES*

Size	Ft-lbs.	N-m
1/4"	8-12	11-16
3/8"	29-41	39-56
1/2"	73-103	99-140
5/8"	146-206	198-279

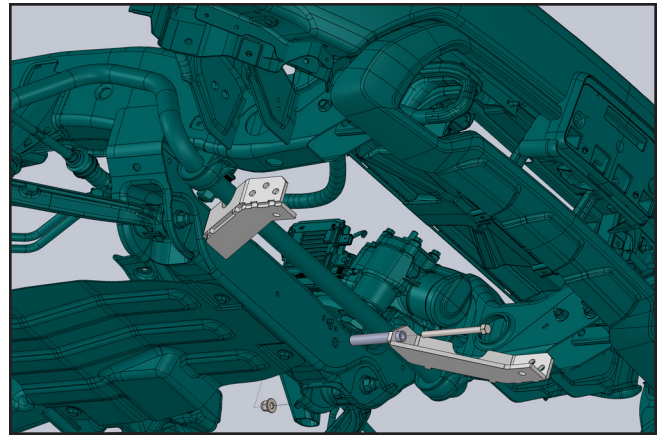
* applications without lock nuts

- Prepare the truck for installation of the mount kit, as follows:
 - Detach the lower lip of the front bumper and return to vehicle owner with hardware. This will not be reinstalled.
 - Remove the front splash shield from behind the front bumper by unscrewing four bolts. Trim edges as illustrated.



DWG. NO. 7766

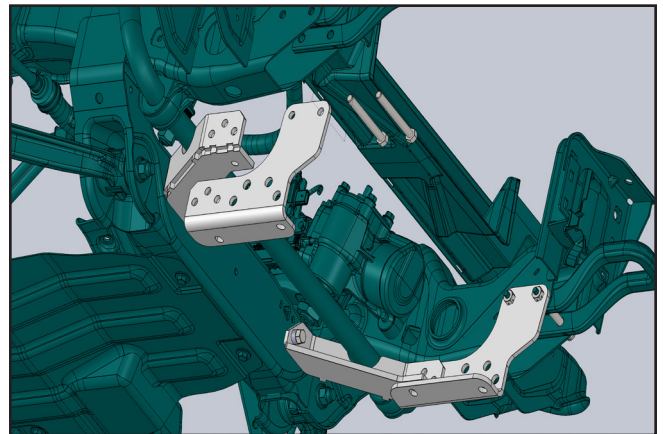
- Identify the LH and RH rear bracket weldments. Insert a 1/2 inch x 5 1/4 inch hex bolt through the spacer bushing of each bracket from the front side of the bracket.



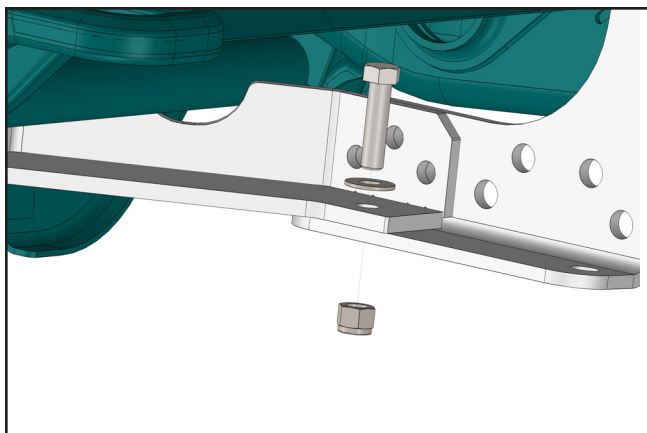
DWG. NO. 111696

Slip spacer bushings through holes in the vehicle crossmember and loosely secure with 1/2 inch flat washers and nylon insert lock nuts from the bolt bag.

- Lift front bracket approx. into place. One bolt at a time, replace tow hook bolts with longer 1/2 inch x 4 1/2 inch grade 8 bolts supplied with the mount kit. Insert bolt through front plate frame and tow hook, secure with nylon insert lock nuts.

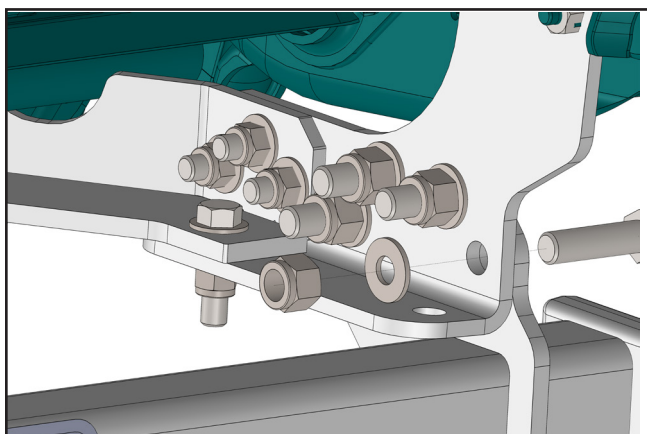


DWG. NO. 111694



DWG. NO. 111695

Fasten rear brackets to front brackets by first inserting a 1/2 inch x 1 1/2 inch hex bolt with a flat washer under its head from the top down through holes in brackets. Secure with nylon insert lock nuts.



DWG. NO. 111697

4. Lift prong weld into place and fit bolt through to hang in place.
5. Install 5/8-11 and 1/2-13 bolts through all plates, USE WASHER and lock nut. Note bolts are long so the plates bear on the bolt shank instead of the thread. Do not replace with fully threaded bolts, use an additional washer if needed to take up bolt slack. Washers should be added on nut side.
6. Fully tighten all hardware.
7. Reinstall splash shield.