

VEHICLE INSTALLATION INSTRUCTIONS FOR:
CHEV/GMC 4x4: 2014 - 2018
K1500 SILVERADO/SIERRA

Hiniker Company
58766 240th St.
P.O. Box 3407
Mankato, MN 56002

INSTRUCTION SHEET NO: 25013568 Rev. B

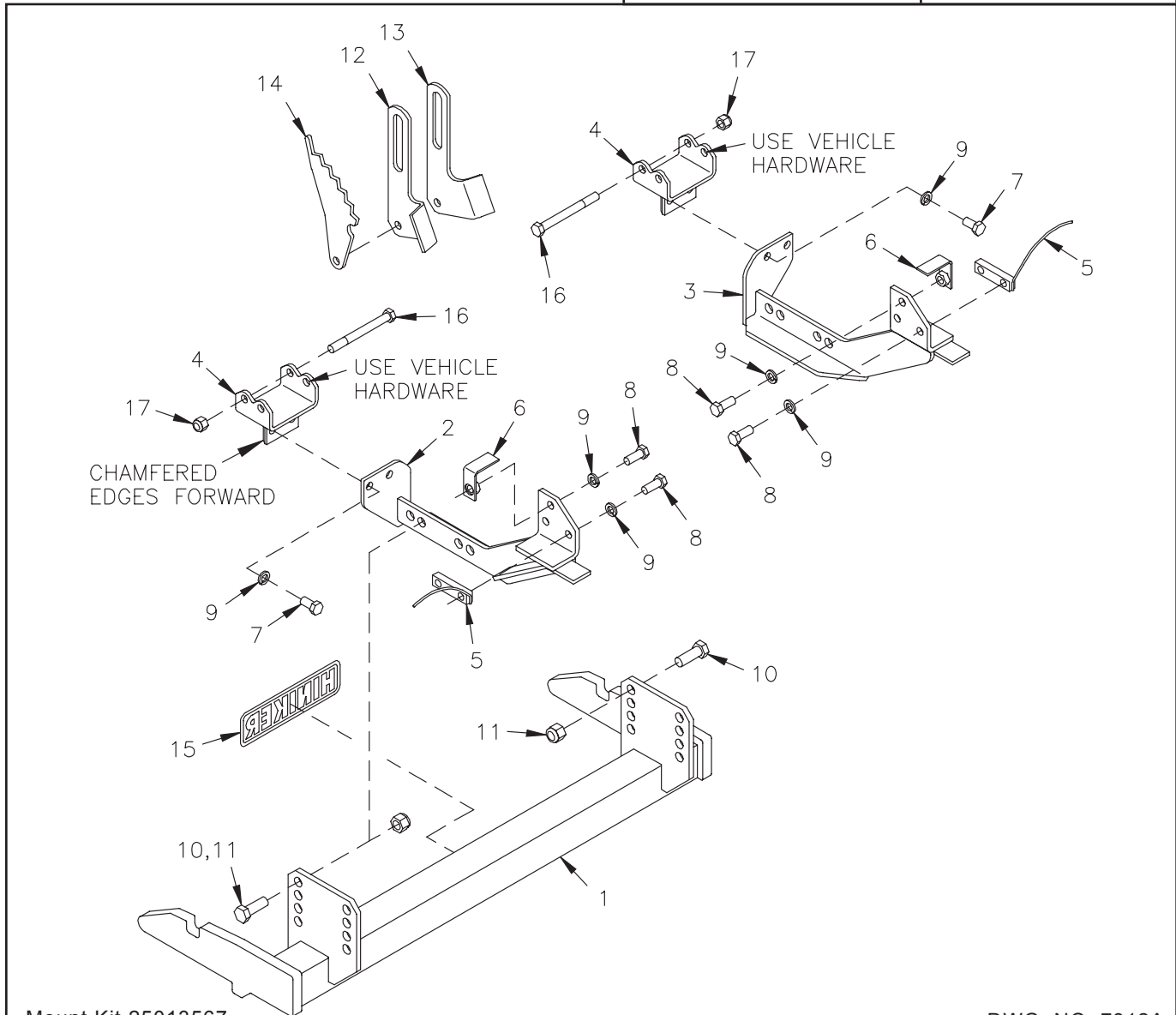
January 7, 2019



IMPORTANT: Read the snowplow operators manual before assembling this kit.

VEHICLE REQUIREMENTS:
-Snowplow Prep Package

REAR BALLAST-
500 lbs. when plow is attached. Secure weight behind the rear axle.



Mount Kit 25013567

DWG. NO. 7312A

REF. NO.	PART NUMBER	DESCRIPTION	QTY.	REF. NO.	PART NUMBER	DESCRIPTION	QTY.
1	25013316	Prong Weldment	1	10	950-001-132	Hex Head Cap Screw 5/8-11 x 1 3/4 Gr. 5	4
2	25013569	LH Side Bracket Weldment	1	11	060756	Lock Nut, 5/8-11 Nylon Insert	4
3	25013570	RH Side Bracket Weldment	1	12	25013330	LH Lower Lift Link	1
4	25013571	Front Bracket Weldment	2	13	25013331	RH Lower Lift Link	1
5	25013572	Nut Bar Weldment	2	14	25013332	Stop Plate	1
6	25013573	Nut Bar Weldment	2	15	25010008	Hiniker Decal	1
7	950-001-231	Hex Head Cap Screw 1/2-13 x 1 Gr. 5	4	16	950-001-325	Hex Head Cap Screw 1/2-13 x 5 Gr. 8	2
8	950-001-111	Hex Head Cap Screw 1/2-13 x 1 1/4 Gr. 5	6	17	951-003-009	Lock Nut 1/2-13 Nylon Insert	2
9	952-001-004	Lock Washer, 1/2 Inch	10		25012207	Bolt Bag	1

All hardware should be tightened only enough to ensure safety during assembly. Fully tighten all hardware after entire assembly is completed.

GRADE 5 TYPE B & F LOCK NUT TORQUE VALUES

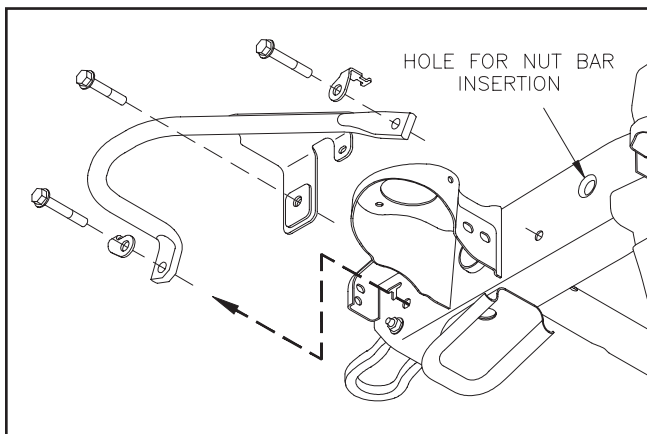
Size	Ft-lbs.	N-m
5/16"	13-18	17-25
3/8"	23-33	31-44
1/2"	58-82	79-112
5/8"	117-165	158-223

GRADE 5 BOLT TORQUE VALUES*

Size	Ft-lbs.	N-m
1/4"	8-12	11-16
3/8"	29-41	39-56
1/2"	73-103	99-140
5/8"	146-206	198-279

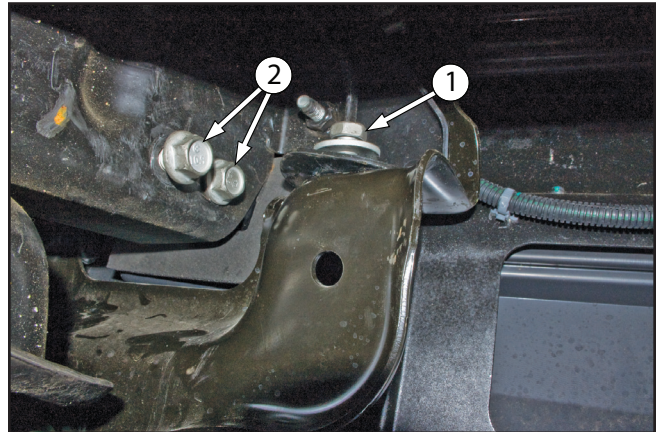
* Applications without lock nuts

1. Remove the plastic splash shield from behind the front bumper by unscrewing six bolts. Set aside the shield and fasteners for reinstallation.
2. On trucks with front frame reinforcements, unbolt the reinforcement from each frame rail and save for reinstallation



DWG NO. 7313

3. On both sides of the vehicle, remove a bolt, arrow 1, between the upper and lower bumper mount brackets on the inboard side of the frame rails and set aside for reinstallation.



Driver Side Frame Rail

PHOTO NO. IMGP5524A

Remove tow hook hardware, arrow 2, from both sides of the vehicle. Keep the shorter rear bolts for reinstallation. Front bolts and nuts will be replaced by hardware supplied with the mount kit.

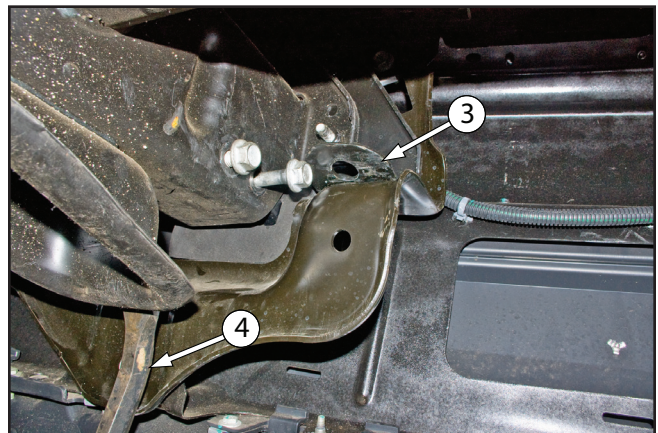
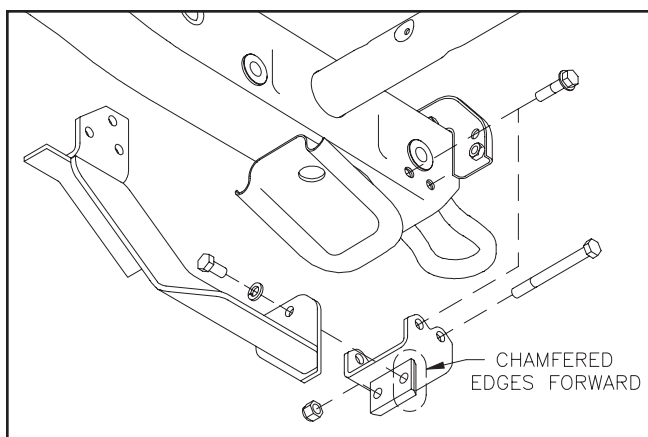


PHOTO NO. IMGP5512A

On the driver side of the truck, bend the flange from the upper bumper mount bracket, arrow 3, upward for removal of the front tow hook bolt.

Pry the truck bumper ahead, arrow 4, for clearance to install front mount brackets onto the frame rails.

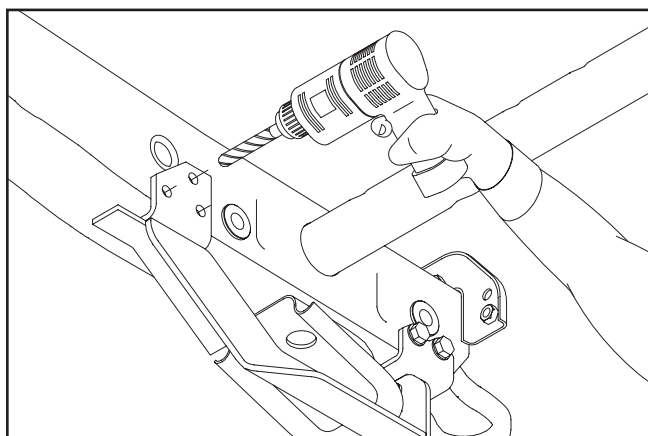


DWG NO. 7314A

Align holes in the brackets with holes in the frame and tow hooks such that chamfered edges of the vertical bars are directed forward. Install 1/2 inch x 5 inch hex bolts through front holes and secure with lock nuts. Thread original tow hook bolts into rear holes to hold brackets in place.

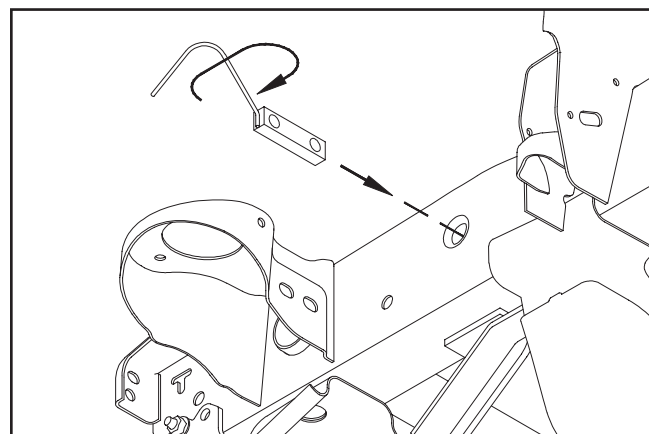
- Loosely fasten the LH and RH side brackets to the front brackets by threading 1/2 inch x 1 inch hex bolts with lock washers into tapped holes in the front brackets.

Reinstall the two bolts removed from the truck between the upper and lower bumper mount brackets in Step 3.



DWG NO. 7315

Push side brackets tight to the vehicle frame rails, then drill three 1/2 inch diameter holes into the inner wall of both frame rails through holes in the bracket plates.

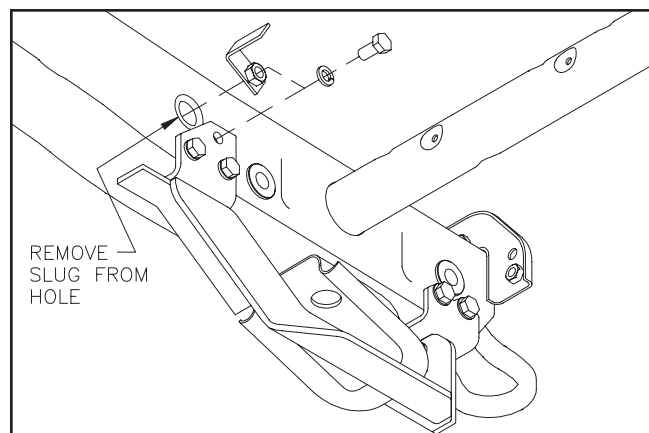


DWG NO. 7316

Bend wire handles on nut bars from the mount kit bolt bag, as required, then insert bars into holes through the outer walls of the frame rails and align with the lower two drilled holes in the inner walls.

Place a lock washer onto 1/2 inch x 1 1/4 inch hex bolts before threading into nut bars.

Break slugs from the holes through the inner walls of each frame rail, then insert the two remaining nut bars into holes and align with upper drilled holes.



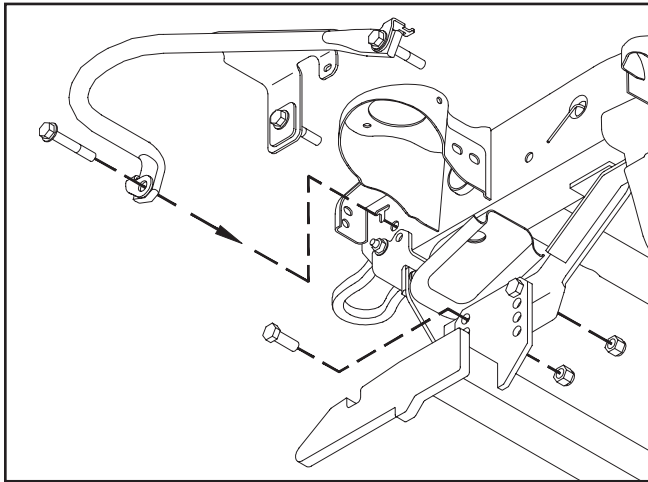
DWG NO. 7317

Thread 1/2 inch x 1 inch hex bolts with lock washers into upper nut bars.

5. Reinstall the two front frame reinforcements removed from the vehicle in Step 2 using the original hardware.

Fasten the mount plates of the prong weldment to holes in the LH and RH side brackets with four 5/8 inch x 1 3/4 inch hex bolts and lock nuts.

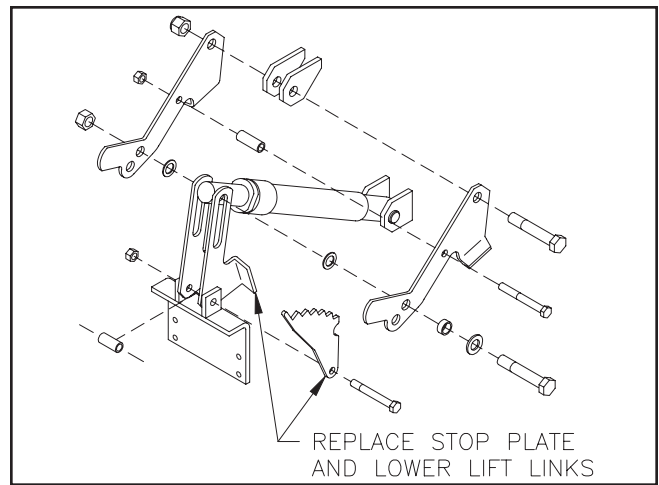
The bottom edges of the prongs should be as close to 10 inches above the ground as possible.



DWG NO. 7318

Cut notches in the lower bumper plastic about 6 inches wide centered on the prongs and remove screws and clip nuts directly above the notches to provide clearance for receivers on the plow frame when attaching the plow to the truck. Remove only the least amount of material required for clearance to preserve the appearance of the truck.

NOTE: If maximum prong height attainable is less than about 9 inches, plows other than 700-Series plows may require a new stop plate and lower lift links installed on the plow frame for the plow attachment and removal procedure to function properly.

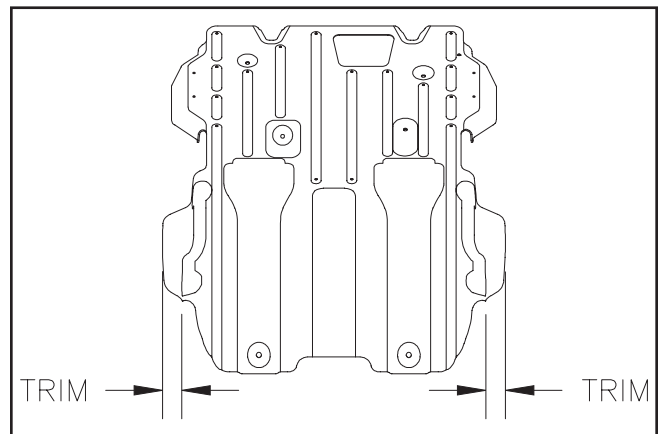


DWG NO. 6960

Install new components supplied with the mount kit in place of components supplied with the plow.

Tighten hardware so that the assembly is secure, yet links are able to pivot.

6. Fully tighten all mount kit fasteners to specified torque values.
7. Trim the outer edges of the splash shield removed from the truck in Step 1 as shown in the drawing so the shield fits between the mount kit side brackets.



DWG NO. 7319

Reinstall the splash shield onto the truck with six original fasteners.