

VEHICLE INSTALLATION INSTRUCTIONS:
 CHEV/GMC 4x4: 2015 - 2019 2500/3500
 SILVERADO/SIERRA

Hiniker Company
 58766 240th St.
 P.O. Box 3407
 Mankato, MN 56002

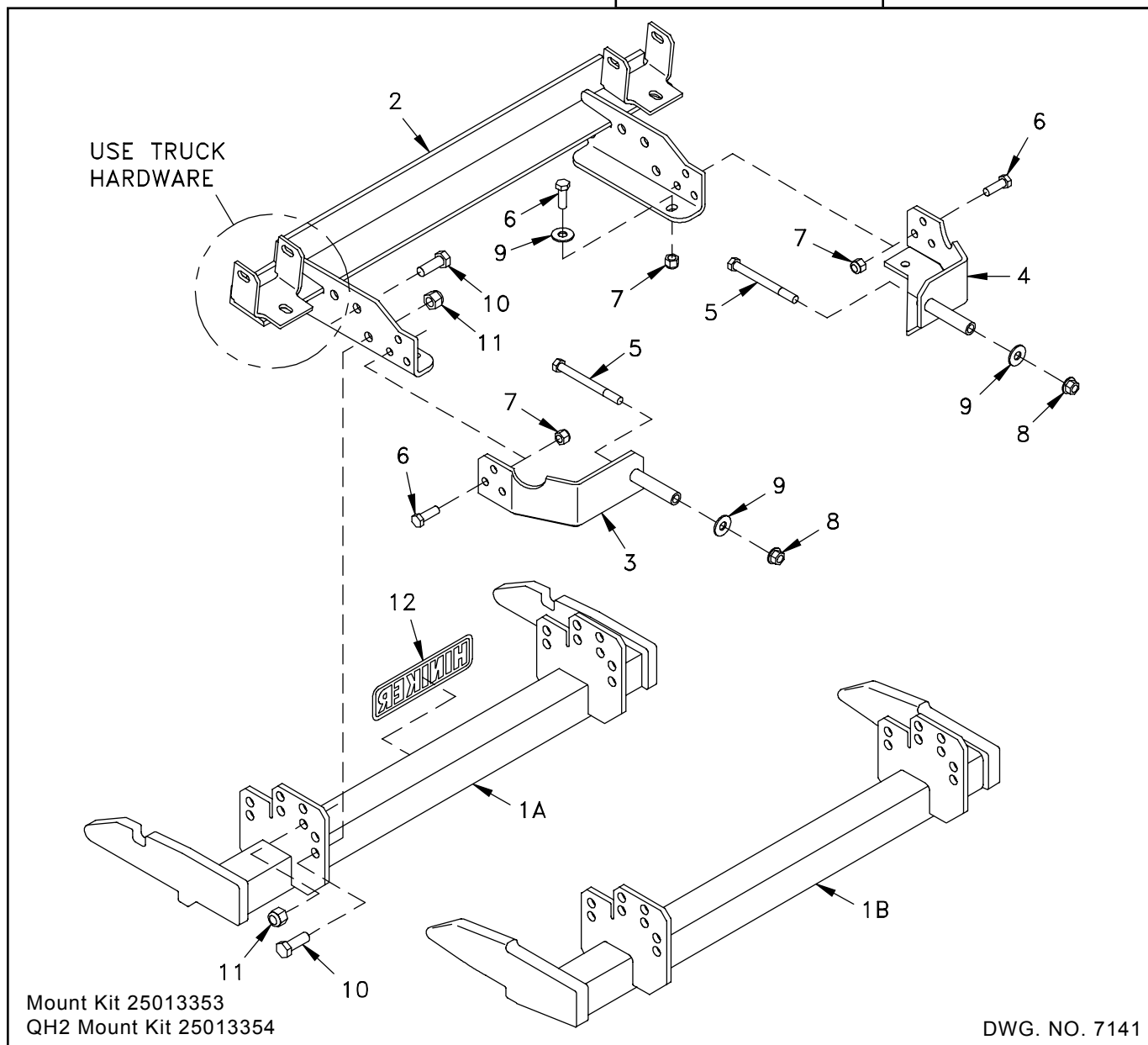
INSTRUCTION SHEET NO: 25013352 Rev. B

October 16, 2019



IMPORTANT: Read the Snowplow Operator's Manual before assembling this kit.

MINIMUM VEHICLE RECOMMENDATIONS	REAR BALLAST - 500 lbs. when plow is attached. Secure Weight Behind Rear Wheels.
MFR Snowplow Prep Package	



DWG. NO. 7141

REF. NO.	PART NUMBER	DESCRIPTION	QTY.	REF. NO.	PART NUMBER	DESCRIPTION	QTY.
1A	25013355	Prong Weldment	1	7	951-003-009	Lock Nut 1/2-13 Nylon Insert	8
1B	25013356	Prong Weldment - QH2	1	8	951-005-055	Lock Nut 1/2-13 Mac Lock	2
2	25013372	Front Frame Weldment	1	9	952-004-067	Flat Washer 1/2 Inch Hardened	4
3	25013373	LH Rear Bracket Weldment	1	10	950-001-132	Hex Head Cap Screw 5/8-11 x 1 3/4 Gr. 5	8
4	25013374	RH Rear Bracket Weldment	1	11	060756	Lock Nut 5/8-11 Nylon Insert	8
5	950-001-271	Hex Head Cap Screw 1/2-13 x 5 1/4 Gr. 8	2	12	25010008	Hiniker Decal	1
6	950-001-125	Hex Head Cap Screw 1/2-13 x 1 1/2 Gr. 5	8		25012829	Bolt Bag	

All hardware should be tightened only enough to ensure safety during assembly. Fully tighten all hardware after entire assembly is completed.

GRADE 5 TYPE B & F LOCK NUT TORQUE VALUES

Size	Ft-lbs.	N-m
5/16"	13-18	17-25
3/8"	23-33	31-44
1/2"	58-82	79-112
5/8"	117-165	158-223

GRADE 5 BOLT TORQUE VALUES*

Size	Ft-lbs.	N-m
1/4"	8-12	11-16
3/8"	29-41	39-56
1/2"	73-103	99-140
5/8"	146-206	198-279

* applications without lock nuts

1. Prepare the truck for installation of the mount kit, as follows:
 - Remove the steel bracket from the back side of the front bumper by unbolting 12 screws.

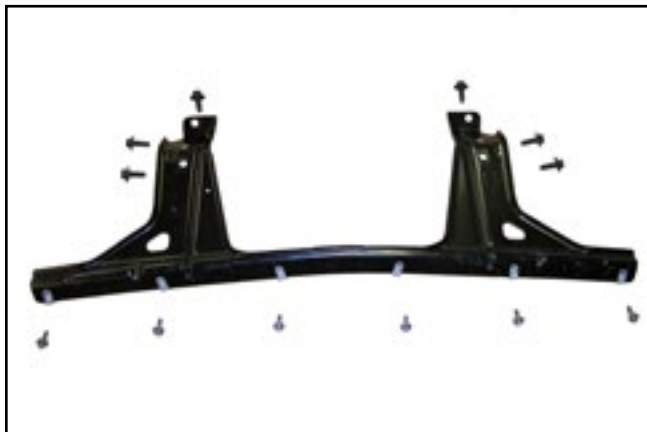


PHOTO NO. 100-2306

Return the bracket and screws to the vehicle owner, as these components will not be reinstalled.

- Remove the plastic splash shield from behind the front bumper by unscrewing four bolts and releasing the cooling line clamp above the shield.

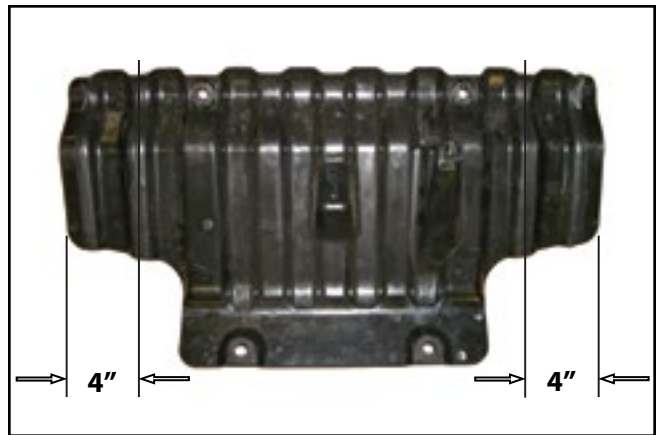


PHOTO NO. 1000504A

Trim approximately 4 inches off both edges of the shield to provide clearance for mount kit brackets.

- Remove the two bolts that fasten each tow hook to the truck frame. It is not necessary to remove tow hooks from frame, but be careful that the hooks don't fall and cause injury.
2. Carefully lift the front frame weldment to the vehicle frame so that holes in the front frame match holes in the vehicle frame.



PHOTO NO. 1000523B

Reinstall the tow hook hardware to loosely secure the front frame to the vehicle.

3. Identify the LH and RH rear bracket weldments. Insert a 1/2 inch x 5 1/4 inch hex bolt through the spacer bushing of each bracket from the front side of the bracket.



PHOTO NO. 1000516

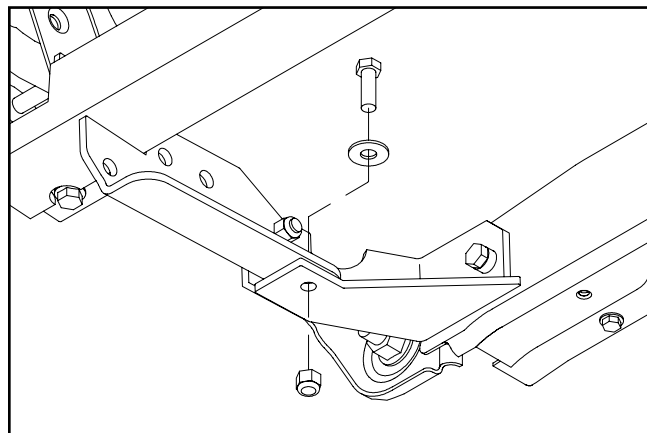
Slip bushings through holes in the vehicle crossmember and loosely secure the brackets with 1/2 inch flat washers and flanged lock nuts from the bolt bag.

Rotate the rear brackets up to the outside of the front frame weldment so that the front holes of rear brackets match rear holes of the front frame.



PHOTO NO. 1000513

Fasten rear brackets to the front frame with three 1/2 inch x 1 1/2 inch hex bolts and nylon insert lock nuts through side holes, and one 1/2 inch x 1 1/2 inch hex bolt, flat washer and nylon insert lock nut through bottom holes.



DWG. NO. 7142

4. Notch the bottom edge of the front bumper plastic about 9 inches outward from the side plates of the front frame weldment to provide clearance for the plow attachment prongs.

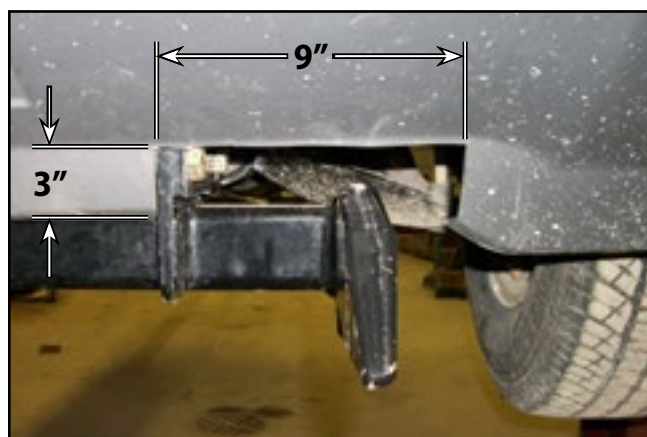


PHOTO NO. 100-2309A

Fasten the mount plates of the prong weldment to holes in the side bracket of the front frame weldment with eight 5/8" x 1 3/4 inch hex bolts and lock nuts.



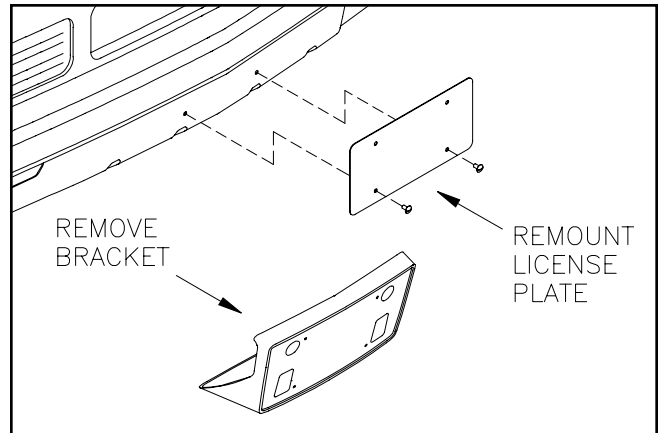
PHOTO NO. 1000508

Fully tighten all mount kit fasteners to the specified torque values.

The bottom edge of the prongs should measure about 10 inches above the ground.

5. Assemble the plastic splash shield removed in step 1 back onto the truck by first reattaching the cooling line clamp above the shield, then fastening the shield to the truck frame with the four original bolts.

6. If the front license plate bracket interferes with the plow lift cylinder after the plow is attached, remove the bracket from the front bumper by drilling out four pop rivets



DWG. NO. 7024

Fasten the license plate directly to the bumper at a height where it will not contact the cylinder when the plow is fully raised.