

Hiniker Company
 58766 240th St.
 P.O. Box 3407
 Mankato, MN 56002

VEHICLE INSTALLATION INSTRUCTIONS:
 DODGE RAM 4 X 4: 2013 - 2018 2500, 3500

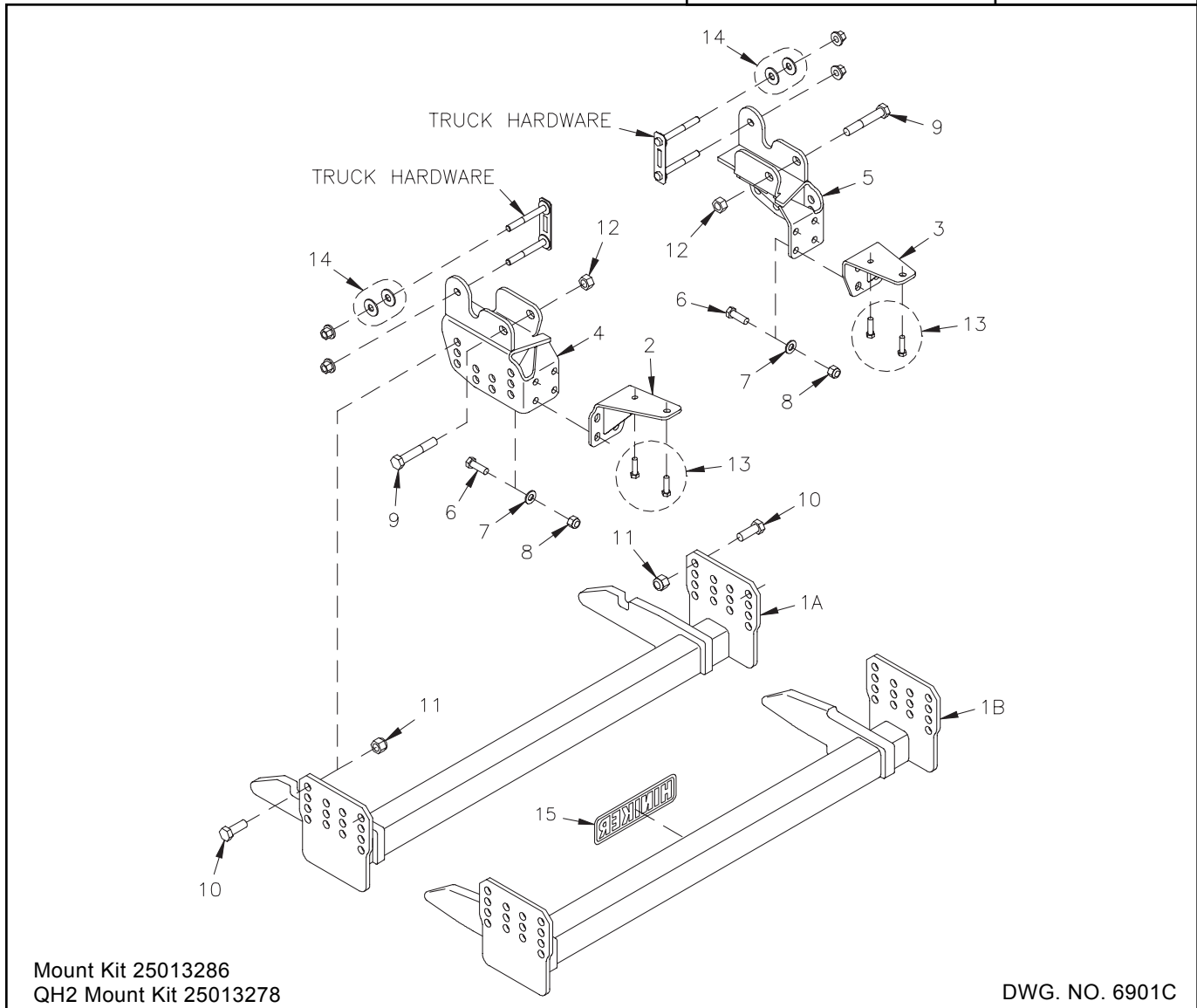
INSTRUCTION SHEET NO: 25013283 Rev. D

August 14, 2019



IMPORTANT: Read the Snowplow Operator's Manual before assembling this kit.

MINIMUM VEHICLE RECOMMENDATIONS	REAR BALLAST - 500 lbs. When snowplow is attached. Secure weight behind rear axle.
- AHD Snowplow Prep Package	



Mount Kit 25013286
 QH2 Mount Kit 25013278

DWG. NO. 6901C

REF. NO.	PART NUMBER	DESCRIPTION	QTY.	REF. NO.	PART NUMBER	DESCRIPTION	QTY.
1A	25010150	Prong Weldment	1	9	950-001-191	Hex Head Cap Screw 5/8-11 x 3 3/4 Gr. 5	2
1B	25012946	Prong Weldment - QH2	1	10	950-001-132	Hex Head Cap Screw 5/8-11 x 1 3/4 Gr. 5	8
2	25013281	LH Rear Bracket Weldment	1	11	060756	Lock Nut 5/8-11 Nylon Insert	8
3	25013282	RH Rear Bracket Weldment	1	12	951-005-044	Lock Nut 5/8-11 2-Way	2
4	25013846	LH Bracket Weldment	1	13	950-011-058	Hex Head Cap Screw M10 x 1.5 x 35 Class 10.9	4
5	25013845	RH Bracket Weldment	1	14	952-002-005	Standard Flat Washer, 1/2 Inch	4
6	950-001-125	Hex Head Cap Screw 1/2-13 x 1 1/2 Gr. 5	8	15	25010008	Hiniker Decal	1
7	952-003-004	SAE Flat Washer, 1/2 Inch	8		25013285	Bolt Bag	1
8	951-003-009	Lock Nut 1/2-13 Nylon Insert	8				

All hardware should be tightened only enough to ensure safety during assembly. Fully tighten all hardware after entire assembly is completed.

GRADE 5 TYPE B & F LOCK NUT TORQUE VALUES

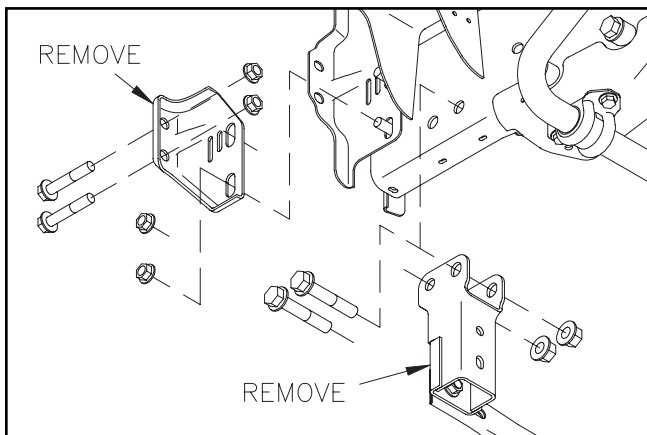
Size	Ft-lbs.	N-m
5/16"	13-18	17-25
3/8"	23-33	31-44
1/2"	58-82	79-112
5/8"	117-165	158-223

GRADE 5 BOLT TORQUE VALUES*

Size	Ft-lbs.	N-m
1/4"	8-12	11-16
3/8"	29-41	39-56
1/2"	73-103	99-140
5/8"	146-206	198-279

* applications without lock nuts

1. Remove the lower plastic portion of the front truck bumper for clearance while assembling mount kit components onto the vehicle. Material will need to be trimmed away from the areas around the plow's attachment prongs before reinstalling plastic to the bumper later.



DWG. NO. 6902

If the truck is equipped with an underframe crossmember, unbolt the crossmember and return with hardware to the owner for reinstallation if the plow mount is removed from the vehicle in the future.

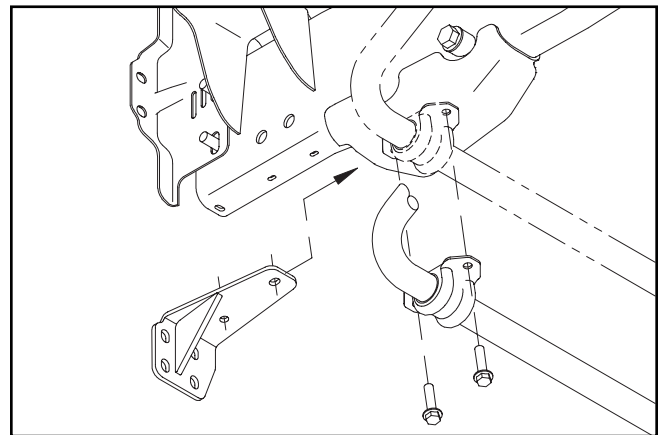
Unbolt the outer tow hook bracket from both sides of the vehicle by removing two bolts and nuts from the front of each bracket and two nuts from the bolt pair through each frame rail.

Save brackets and hardware for reinstallation.

2. Identify the LH and RH rear brackets from the mount kit.

Important: Take great care not to crossthread or strip threads in the vehicle frame!

On one side of the vehicle at a time, remove two 10mm bolts that fasten the torsion bar bushing to the bottom of the vehicle frame. These four bolts will be replaced with longer bolts supplied with the mount kit.



DWG NO. 6903

Slide the rear brackets between the torsion bar bushings and the frame rails. Loosely fasten the assembly to the frame with M10 x 1.5 x 35 Class 10.9 hex bolts provided.

3. Install the front tab of the LH and RH front brackets over the lower bolt pair at the front of each frame rails. A pry bar may be required under the lower bolt on the passenger side if the vehicle radiator limits bolt travel.



PHOTO NO. 100-4978

Place two 1/2 inch standard flat washers (larger O.D.) on each top bolt to act as spacers for the tow hook brackets, then reinstall the tow hook brackets onto bolt ends and loosely start nuts.

Reinstall two bolts through the front of each tow hook and bracket and start nuts.



PHOTO NO. 100-4975

Insert a 5/8 inch x 3 3/4 inch hex bolt through the side hole in each bracket and secure with a lock nut.



PHOTO NO. 100-4979

Insert four 1/2 inch x 1 1/2 inch hex bolts per side between the front and rear brackets. Loosely secure the assembly with 1/2 inch SAE flat washers (smaller O.D.) and lock nuts.

4. Fasten the mount plates of the prong weldment to holes in the LH and RH brackets with 5/8 inch x 1 3/4 inch hex bolts and lock nuts.



PHOTO NO. 100-4970

Bottom edges of the prongs should measure about 10 inches above the ground. Ideally, the prongs should lift the plow frame slightly when driving into the plow.

5. Fully tighten all hardware to specified torque values.
6. Notch the front bumper plastic about 6 inches wide centered on the prongs to provide clearance for the receivers on the plow frame when attaching the plow to the truck. Remove only the least amount of material required for clearance to preserve the appearance of the truck.

Reassemble the plastic piece to the front bumper with the original fasteners.