

VEHICLE INSTALLATION INSTRUCTION:
CHEV/GMC 4X4: 2004 - 2012 COLORADO/CANYON

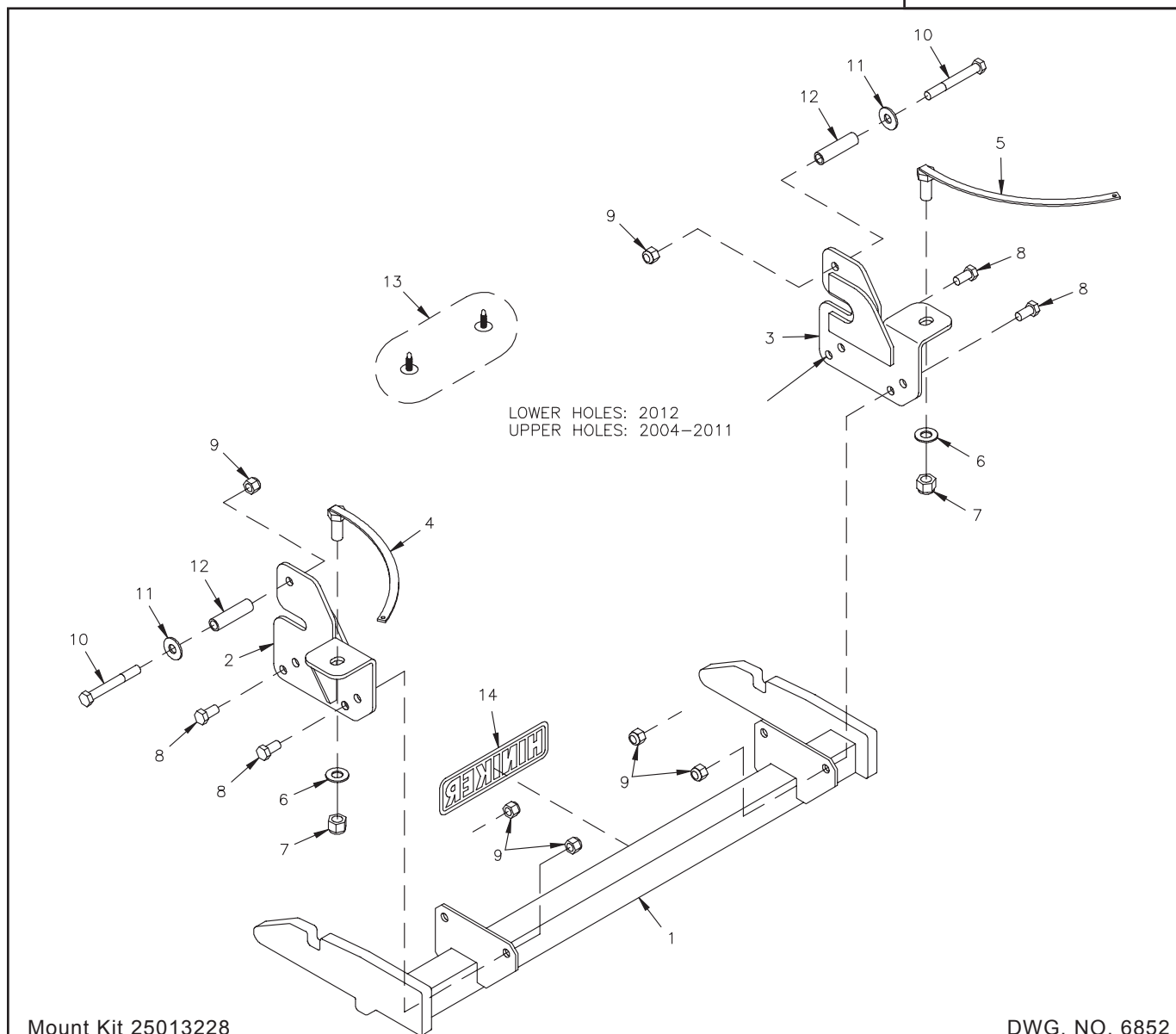
INSTRUCTION SHEET NO: 25013227 Rev. A

December 2, 2014



IMPORTANT: Read the Snowplow Operator's Manual before assembling this kit.

REAR BALLAST -
150 lbs. when plow is attached.
Secure Weight Behind Rear
Wheels.



Mount Kit 25013228

DWG. NO. 6852

REF. NO.	PART NUMBER	DESCRIPTION	QTY.	REF. NO.	PART NUMBER	DESCRIPTION	QTY.
1	25013229	Prong Weldment	1	9	951-003-009	Lock Nut 1/2-13 Nylon Insert	6
2	25013230	LH Side Bracket Weldment	1	10	950-001-124	Hex Head Cap Screw 1/2-13 x 4 Gr. 5	2
3	25013231	RH Side Bracket Weldment	1	11	952-004-067	Flat Washer 1/2 Inch, Hardened	2
4	25012013	LH Side Bolt Weldment	1	12	25013232	Spacer Bushing	2
5	25012014	RH Side Bolt Weldment	1	13	25010499	Trim Panel Retainer	2
6	952-003-003	SAE Flat Washer 5/8 Inch	2	14	25010008	Hiniker Decal	1
7	060756	Lock Nut 5/8-11 Nylon Insert	2		25012007	Bolt Bag	1
8	950-001-111	Hex Head Cap Screw 1/2-13 x 1 1/4 Gr. 5	4				

All hardware should be tightened only enough to ensure safety during assembly. Fully tighten all hardware after entire assembly is completed.

GRADE 5 TYPE B & F LOCK NUT TORQUE VALUES

Size	Ft-lbs.	N-m
5/16"	13-18	17-25
3/8"	23-33	31-44
1/2"	58-82	79-112
5/8"	117-165	158-223

GRADE 5 BOLT TORQUE VALUES*

Size	Ft-lbs.	N-m
1/4"	8-12	11-16
3/8"	29-41	39-56
1/2"	73-103	99-140
5/8"	146-206	198-279

* applications without lock nuts

1. Remove the splash shield from under the vehicle by unscrewing four bolts. The two side bolts will not be reinstalled with the snowplow mount kit.

On model year 2012 and newer trucks, unbolt the 1 1/2 inch square crossmember below the front frame rails. The crossmember and fasteners will not be reinstalled with the snowplow mount kit and should be returned to the vehicle owner for reinstallation if the mount kit is removed in the future.



Remove Crossmember From PHOTO NO. 100-1973A
2012 & Newer Trucks

the truck bumper by releasing two plastic expanding rivets, then unsnapping the spoiler from the air dam.



Remove Spoiler From PHOTO NO. 9932
2004-2011 Trucks

The spoiler will not be reinstalled with the snowplow mount kit and should be returned to the vehicle owner for reinstallation if the mount kit is removed in the future.

2. Insert the LH and RH bolt weldments from the kit into the large round holes through the outside walls of the vehicle frame rails.



PHOTO NO. 9936

Maneuver the bolts to drop through holes in the bottom of the frame rails toward the front of the truck.

On 2004-2011 trucks, remove the spoiler (Photo No. 9932) from the air dam under

- Lift the LH and RH side brackets to the bottom and inside of their respective frame rails so that the rear hole in the bracket matches the bolt through the bottom of the rail. Loosely install 5/8 inch flat washers and lock nuts onto bolts to hold brackets in place.

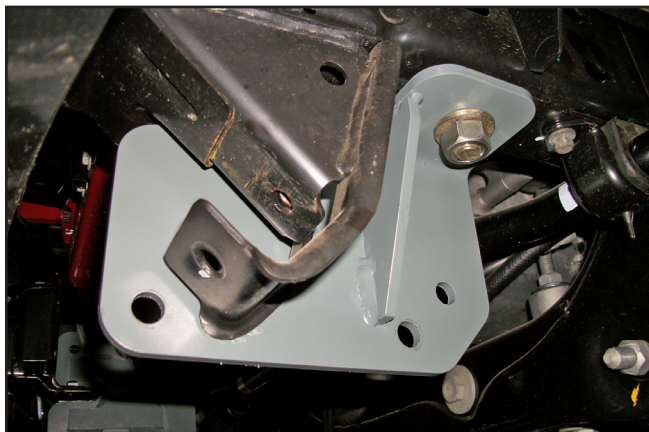


PHOTO NO. 100-1954

Slide 1/2 inch flat washers and spacer bushings onto 1/2 inch x 4 inch hex bolts. Insert the assemblies through rectangular slots in the outside wall of the vehicle frame rails so that the threaded end of the bolt passes through the front hole of the side bracket.



PHOTO NO. 100-1958A

Thread 1/2 inch lock nuts onto bolt ends and fully tighten.

- Trim the vehicle splash shield removed in step 1 to approximately 25 1/2 inches wide. Note that the outer portion of the side holes will be cut away.

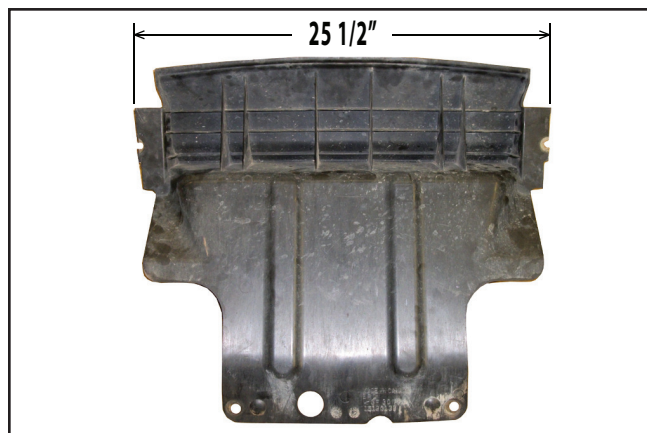
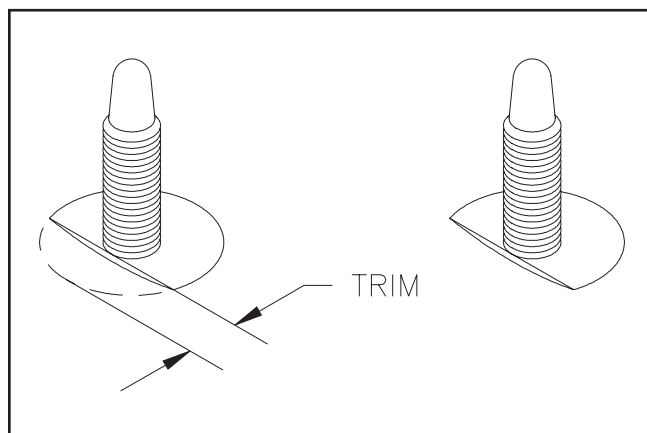


PHOTO NO. 100-1964

Trim two plastic trim panel retainers from the kit as shown in the illustration.



DWG. NO. 6853

Carefully lift the splash shield back into position on the truck and reinstall two original bolts through the rear holes.

Push trim panel retainers up through the side holes of the splash shield and into weld nuts in the vehicle frame to complete reinstallation.

(Continued)

5. Loosely bolt the prong weldment between the LH and RH side brackets with four 1/2 inch x 1 1/4 inch hex bolts and lock nuts.



PHOTO NO. 100-1939

Bolt prong plates through lower sets of holes in the side brackets on model year 2012 and newer trucks with the square tube crossmember. Bolt through upper sets of holes on model years 2004 - 2011 trucks without the crossmember.

Fully tighten all the hardware. Bottom edges of the prongs should measure 9 to 10 inches above the ground when complete.