

VEHICLE INSTALLATION INSTRUCTIONS:
DODGE RAM 4 X 4: 2010 – 2012, 2500, 3500

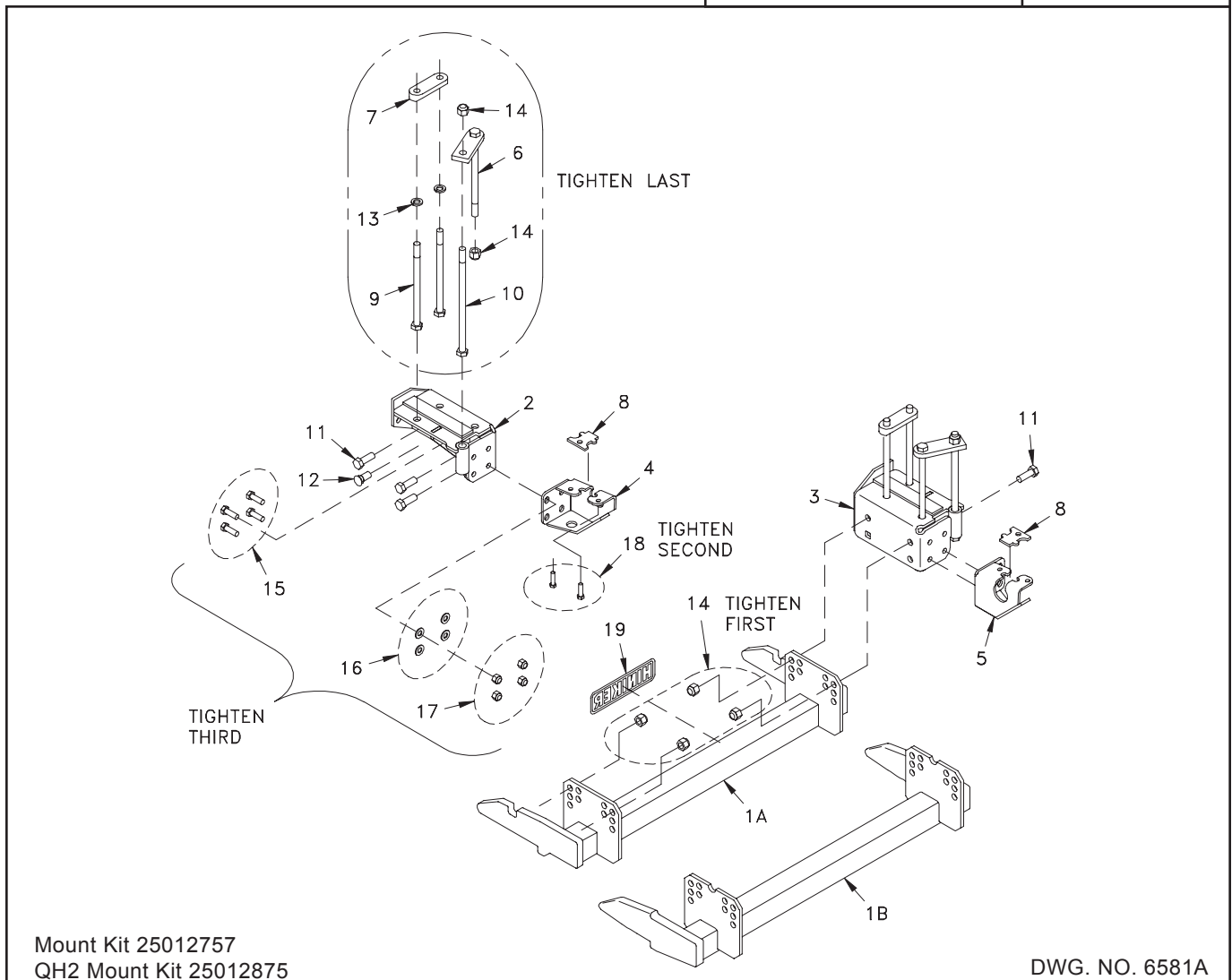
INSTRUCTION SHEET NO: 25013183 Rev. A

June 26, 2013



IMPORTANT: Read the Snowplow Operator's Manual before assembling this kit.

MINIMUM VEHICLE RECOMMENDATIONS	REAR BALLAST - 500 lbs. When snowplow is attached. Secure weight behind rear axle.
- AHD Snowplow Prep Package	



Mount Kit 25012757
QH2 Mount Kit 25012875

DWG. NO. 6581A

REF. NO.	PART NUMBER	DESCRIPTION	QTY.	REF. NO.	PART NUMBER	DESCRIPTION	QTY.
1A	25012253	Prong Weldment	1	11	950-001-132	Hex Head Cap Screw 5/8-11 x 1 3/4 Gr. 5	6
1B	25012879	Prong Weldment - QH2	1	12	030-76060	Plow Bolt 5/8-11 x 1 1/2 Gr. 5	2
2	25012758	LH Bracket Weldment	1	13	952-001-005	Lock Washer 5/8 Inch	4
3	25012759	RH Bracket Weldment	1	14	060756	Lock Nut 5/8-11 Nylon Insert	12
4	25011309	LH Rear Bracket Weldment	1	15	950-001-125	Hex Head Cap Screw 1/2-13 x 1 1/2 Gr. 5	8
5	25011310	RH Rear Bracket Weldment	1	16	952-003-004	SAE Flat Washer, 1/2 Inch	8
6	25012633	Wide Clamp Weldment (Square End)	2	17	951-003-009	Lock Nut 1/2-13 Nylon Insert	8
7	25012760	Nut Bar	2	18	950-011-058	Hex Head Cap Screw M10 x 1.5 x 35 Class 10.9	4
8	25011316	Spacer Plate	2	19	25010008	Hiniker Decal	1
9	950-001-230	Hex Head Cap Screw 5/8-11 x 9 1/2 Gr. 5	4	25012762	Bolt Bag		
10	950-001-303	Hex Head Cap Screw 5/8-11 x 12 Gr. 5	2				

All hardware should be tightened only enough to ensure safety during assembly. Fully tighten all hardware after entire assembly is completed.

GRADE 5 TYPE B & F LOCK NUT TORQUE VALUES

Size	Ft-lbs.	N-m
5/16"	13-18	17-25
3/8"	23-33	31-44
1/2"	58-82	79-112
5/8"	117-165	158-223

GRADE 5 BOLT TORQUE VALUES*

Size	Ft-lbs.	N-m
1/4"	8-12	11-16
3/8"	29-41	39-56
1/2"	73-103	99-140
5/8"	146-206	198-279

* applications without lock nuts

1. Slip the clamp weldments over the left and right vehicle frame rails behind the frame towers, with rods inboard of the rail as shown at location 1.

Note: Do not pinch lines or wires between clamps and the vehicle frame.

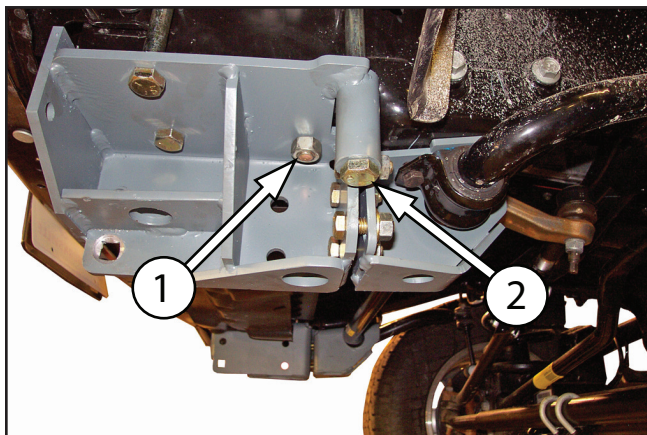


PHOTO NO. DCP2801A

Carefully lift the LH and RH brackets to the vehicle rails so that clamp rods pass through the rear inboard holes in the bracket. Loosely thread 5/8 inch lock nuts onto the rods.

Insert 5/8 inch x 12 inch hex bolts up through the bushing in each bracket, as shown at location 2, and through the clamp above the rail. Secure each bolt with a lock nut.

2. Place a tapped nut bar on top of each vehicle frame rail, beveled edges down, and ahead of the frame tower so that holes are in line with front holes in the side bracket.

Before continuing check that nut bars rest fully on top of the frame rails. If mount plates for the bumper prevent bars from resting on rails, loosen bumper mounting hardware to lower the bumper. After mount brackets have been installed, raise the bumper up as far as possible and retighten hardware.

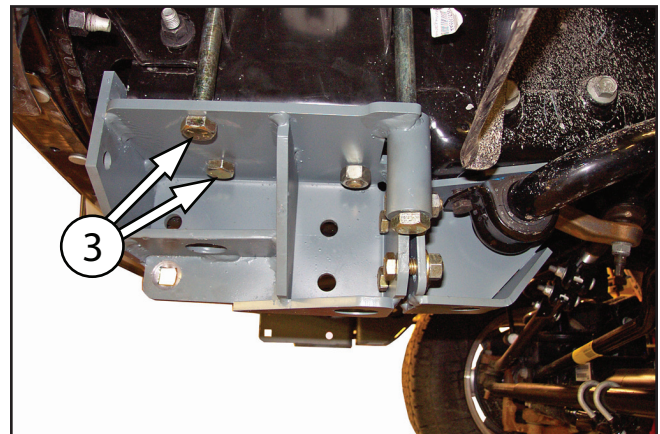
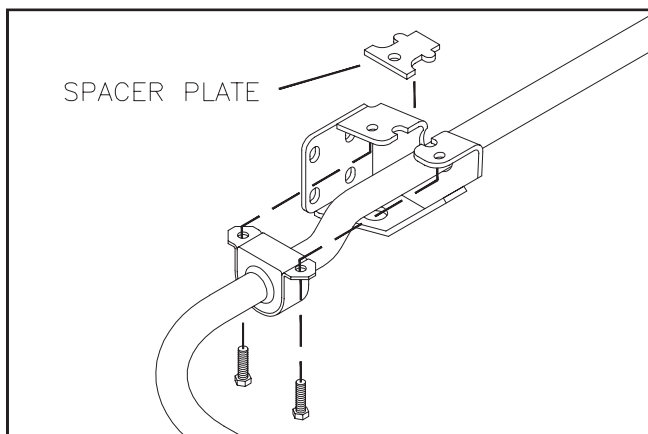


PHOTO NO. DCP2800A

Insert two 5/8 inch x 9 1/2 inch hex bolts with lock washers up through the two front holes in each side bracket, as shown at location 3, and loosely thread into nut bars.

3. On one side of the vehicle at a time, remove two 10 mm bolts that fasten the torsion bar bushing to the bottom of the vehicle frame.

These four bolts will be replaced with longer bolts in the hardware bag during installation of the rear bracket.



DWG NO. 5202

Slide the rear bracket between the torsion bar bushing and frame rail, then install a spacer plate from the hardware bag in the notch of the bracket to provide an upper surface for the bushing. Loosely fasten the assembly to the frame with M10 x 1.5 x 35 Class 10.9 hex bolts from the hardware bag.

IMPORTANT: Take great care not to crossthread or strip threads in the vehicle frame!

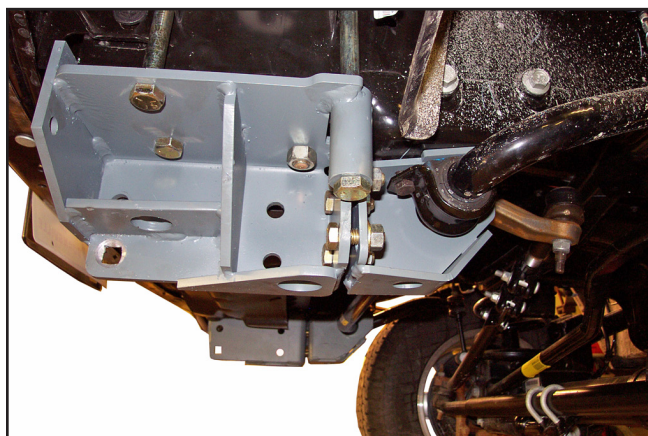


PHOTO NO. DCP2802

Insert four 1/2 inch x 1 1/2 inch hex bolts per side between the front and rear brackets. Loosely secure the assembly with 1/2 inch washers and lock nuts.

4. Trim the plastic air dam beneath the front bumper to provide clearance for the attachment prongs and plow receivers.

Refer to the following photo for approximate cut-out dimensions. Trim the least amount of material required for clearance.

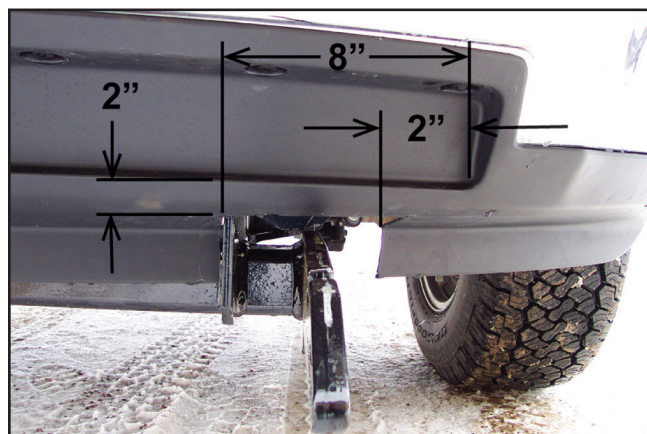


PHOTO NO. DCP2833A

Fasten the mount plates of the prong weldment to holes in the LH and RH side brackets with six 5/8 inch x 1 3/4 inch hex bolts, two 5/8 inch x 1 1/2 inch plow bolts and lock nuts.

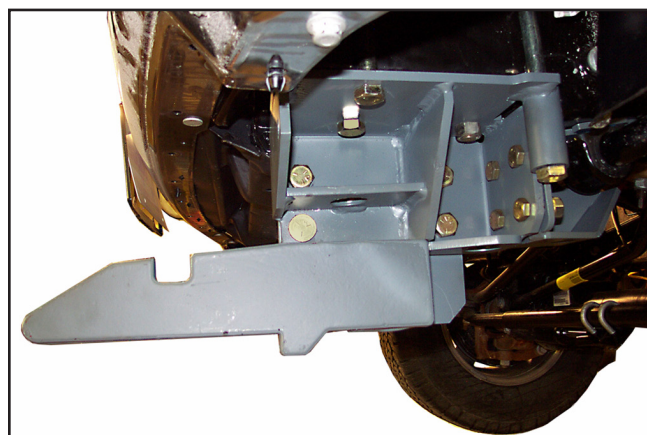


PHOTO NO. DCP2796

Bottom edges of the prongs should measure about 10 inches above the ground. Ideally, the prongs should lift the plow frame slightly when driving into the plow.

5. Fully tighten mount kit hardware according to the following procedure:
 - First tighten the four bolts attaching the prong weldment to the front brackets.
 - Second, tighten the four 10 mm bolts holding the rear brackets and torsion bar bushings to the vehicle frame. Again, use care not to damage threads in the frame.

- Third, tighten the four bolts per side fastening the rear brackets to the front. This should pull the front brackets tight against the fronts of the vehicle rails.
- Finally, tighten the four 5/8 inch lock nuts per side on the bolts and clamps holding the front brackets against the bottoms of the vehicle rail.

Headlight Removal

Remove two screws from locations shown below.

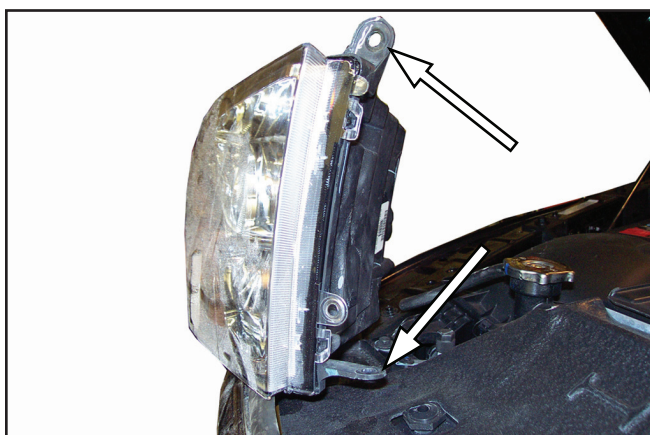


PHOTO NO. DCP2789A

Push up the latch at location 4 through the access door in the front wheel well.

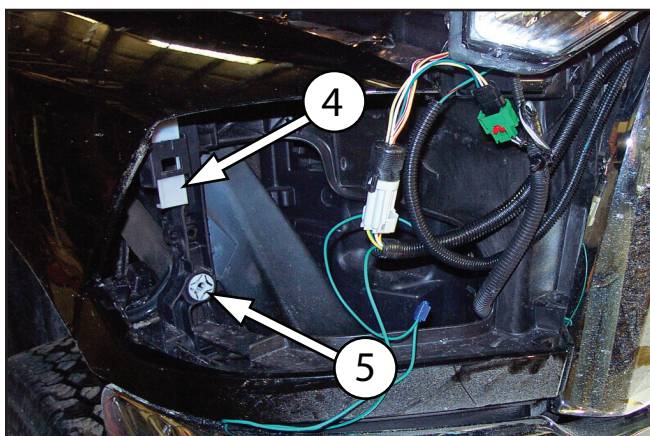


PHOTO NO. DCP2786A

Pull the lamp forward to release the assembly from the socket at location 5.