

VEHICLE INSTALLATION INSTRUCTIONS FOR:
 CHEV/GMC 4x4: 1999 - 2010
 2500 SILVERADO/SIERRA,
 2500 HD, 3500 SILVERADO/SIERRA, 1500 HD

Hiniker Company
 58766 240th St.
 P.O. Box 3407
 Mankato, MN 56002

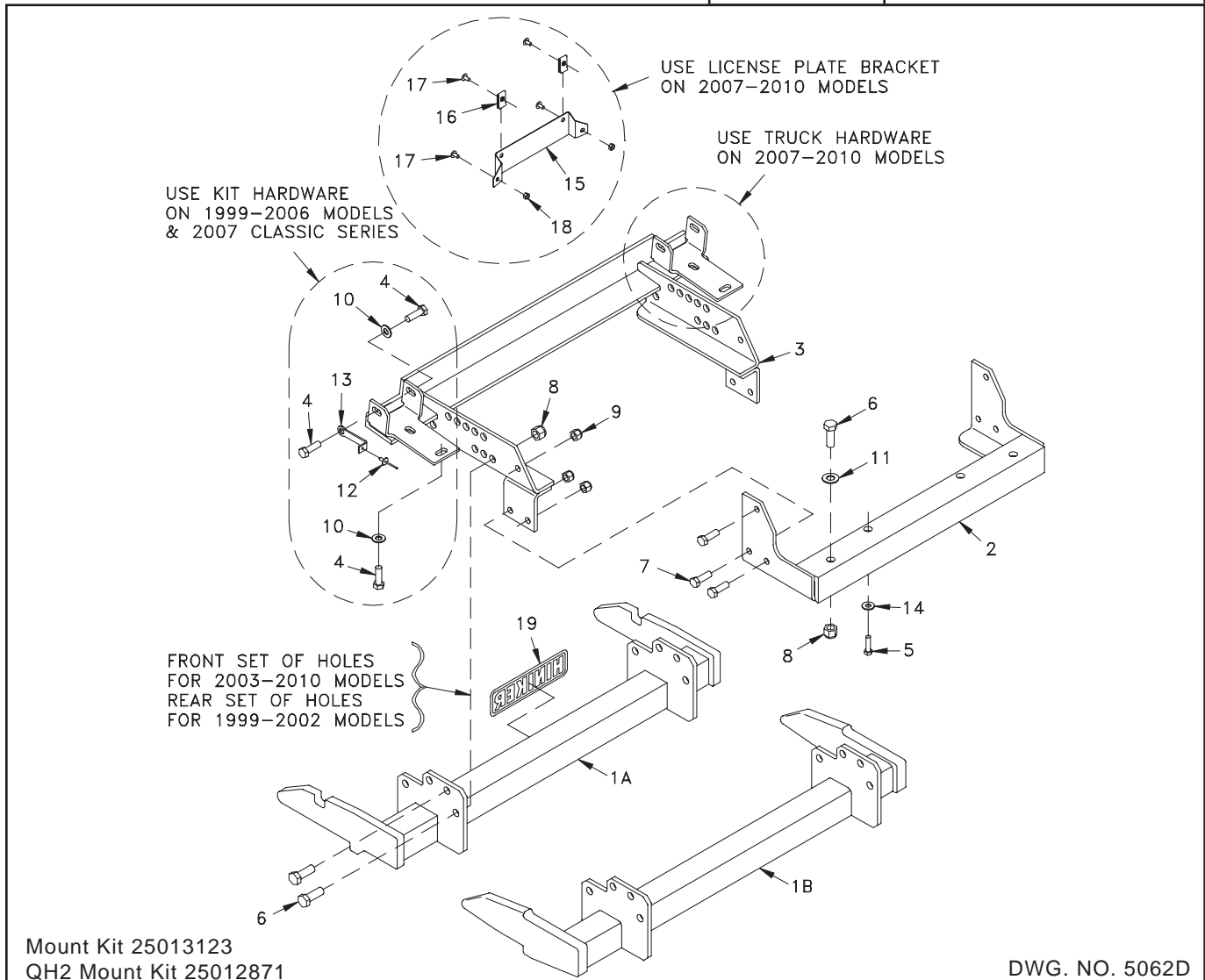
INSTRUCTION SHEET NO: 25013179

April 5, 2012



IMPORTANT: Read the Snowplow Operator's Manual before assembling this kit.

Minimum Vehicle Recommendations	
MFR Snowplow Prep Package	REAR BALLAST - 500 lbs. when plow is attached. Secure Weight Behind Rear Wheels.



Mount Kit 25013123
 QH2 Mount Kit 25012871

DWG. NO. 5062D

REF. NO.	PART NUMBER	DESCRIPTION	QTY.	REF. NO.	PART NUMBER	DESCRIPTION	QTY.
1A	25011179	Prong Weldment	1	11	952-003-003	SAE Flat Washer 5/8 Inch	2
1B	25012921	Prong Weldment - QH2	1	12	954-002-014	Pop Rivet 3/16 x 3/8	2
2	25011181	Rear Frame Weldment	1	13	25011190	Fascia Strap	2
3	25012924	Front Frame Weldment	1	14	952-002-003	Standard Flat Washer 3/8 Inch	2
4	950-011-046	Hex Head Cap Screw M12 x 1.75 x 40 Class 10.9	6	15	25012216	License Plate Bracket	1
5	950-011-058	Hex Head Cap Screw M10 x 1.5 x 35 Class 10.9	2	16	25012217	Clip Nut 1/4-20	2
6	950-001-132	Hex Head Cap Screw 5/8-11 x 1 3/4 Gr. 5	10	17	950-004-078	Machine Screw 1/4 x 1/2 Slotted Truss Head	4
7	950-001-125	Hex Head Cap Screw 1/2-13 x 1 1/2 Gr. 5	6	18	061278	Lock Nut 1/4-20 Keps	2
8	060756	Lock Nut 5/8-11 Nylon Insert	10	19	25010008	Hiniker Decal	1
9	951-003-009	Lock Nut 1/2-13 Nylon Insert	6		25012236	Bolt Bag	
10	952-003-004	SAE Flat Washer 1/2 Inch	4				

All hardware should be tightened only enough to ensure safety during assembly. Fully tighten all hardware after entire assembly is completed.

**GRADE 5 TYPE B & F LOCK NUT
TORQUE VALUES**

Size	Ft-lbs.	N-m
5/16"	13-18	17-25
3/8"	23-33	31-44
1/2"	58-82	79-112
5/8"	117-165	158-223

GRADE 5 BOLT TORQUE VALUES*

Size	Ft-lbs.	N-m
1/4"	8-12	11-16
3/8"	29-41	39-56
1/2"	73-103	99-140
5/8"	146-206	198-279
* applications without lock nuts		

1. Remove the bolts that fasten each tow hook to the truck frame. It is not necessary to remove tow hooks from the frame. On model year 1999 to 2006 trucks and 2007 "Classic" series, the six bolts removed will be replaced with longer bolts supplied in this kit. On model year 2007 to 2010 trucks, tow hook hardware will be used for kit installation.

Remove the plastic splash shield from the vehicle by removing three front bolts and two rear bolts. Save the three front bolts for reassembly, the two rear bolts will be replaced with longer bolts supplied in this kit.

On model year 2007 to 2010 trucks, the license plate bracket on the truck must be replaced with the bracket supplied in this kit to provide clearance for the snowplow lift cylinder, as follows:

Remove the license plate bracket from the front bumper by unfastening four plastic retainers.



Model Year 2007 - 2010 Trucks PHOTO NO. DCP0939

Return the bracket and retainers to the vehicle owner, as a new license plate bracket and mounting hardware are provided in the kit.

Fasten the license plate bracket from the kit to the upper set of holes from where the original bracket was removed, using two 1/4 inch x 1/2 inch machine screws and lock nuts. Attach the bracket so that clip nuts are along the top edge of the bracket.



Model Year 2007 - 2010 Trucks PHOTO NO. DCP0935

Use the two remaining screws to attach the license plate to the bracket.

- Trim approximately 2 1/2 inches off the edges of the splash shield, where shown. Also, lengthen the two slots at the bottom of the shield about 1/4 inch closer to the bottom edge.

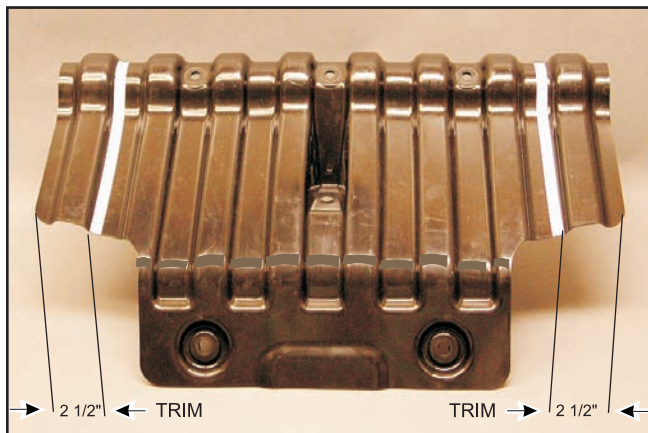
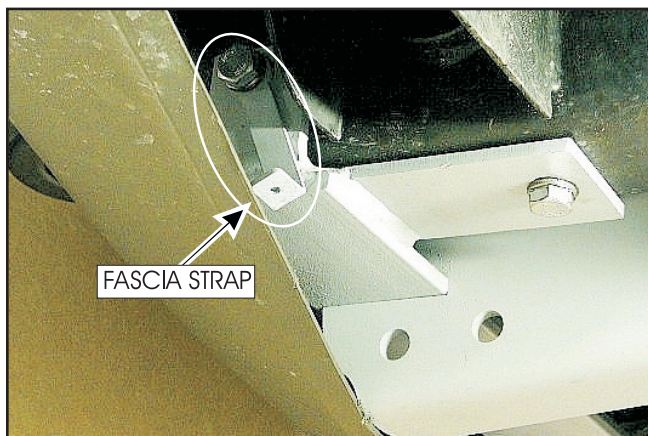


PHOTO NO. 252

The lower portion of the shield must pass through the rear frame weldment when reassembled on the vehicle.

- Carefully lift the front frame weldment to the vehicle frame so that the holes in the front frame match tow hook holes in the vehicle frame.



Model Year 1999-2006 Trucks

PHOTO NO. 912

On model year 1999 to 2006 trucks and 2007 "Classic" series, place a 1/2 inch flat washer on two M12 x 1.75 x 40 hex bolts and loosely assemble the front frame to the vehicle by threading the bolts into the bottom tapped holes in the tow hooks.

Likewise, place a 1/2 inch flat washer on two M12 x 1.75 x 40 hex bolts and loosely thread into the tapped tow hook holes on the inside of each frame rail.

Place a fascia strap from the mount kit bolt bag onto the remaining two M12 x 1.75 x 40 hex bolts, as shown in the photo, and loosely thread into the tapped tow hook holes on the outside of each frame rail. These straps will be used to hold up the plastic fascia on model year 1999 to 2002 bumpers later in these instructions.

On model year 2007 to 2010 trucks, reinstall the original tow hook bolts through holes in the front frame weldment to hold the frame in place.

- Bolt the rear frame weldment to the vehicle crossmember with two 5/8 inch x 1 3/4 inch hex bolts, flat washers and lock nuts.

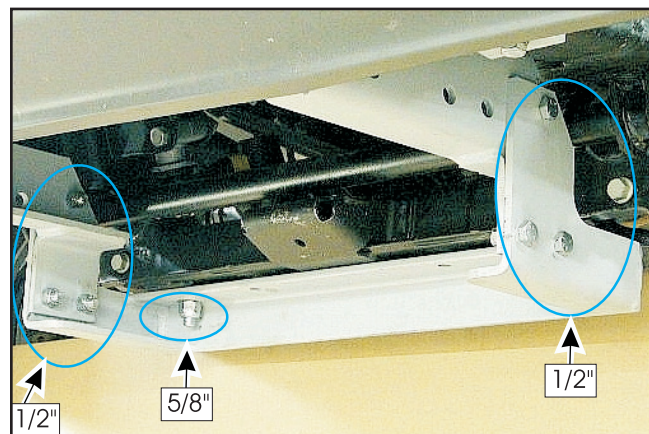


PHOTO NO. 913

Fasten the rear frame weldment to the front frame weldment with six 1/2 inch x 1 1/2 inch hex bolts and lock nuts.

Fully tighten all hardware to specified torque values, except for the two bolts through the fascia straps and front frame weldment at the outside tow hook holes. Use a 15/16 inch box end wrench to reach inside the vehicle crossmember to capture the two 5/8 inch hex bolts through the rear frame weldment for final tightening.

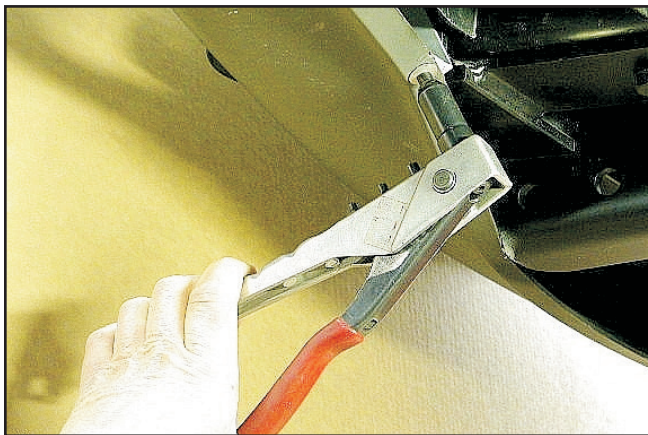
5. On model year 1999 to 2002 trucks, use the two fascia straps and pop rivets to secure the plastic bumper fascia away from the snowplow attachment prongs according to the following instructions.

On model year 2003 to 2010 trucks, fully tighten the two outside tow hook bolts and proceed to step 6.



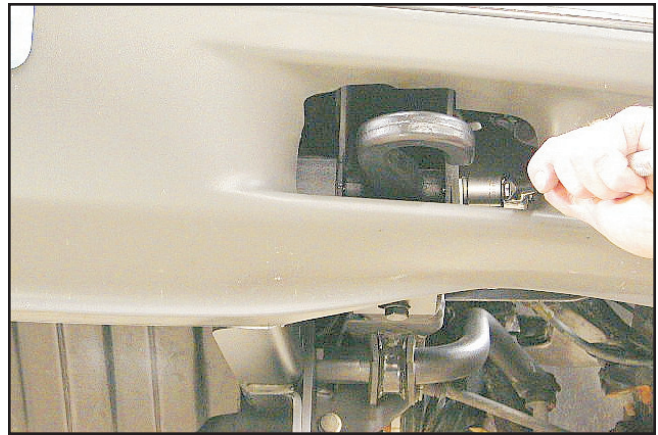
Model Year 1999-2002 Trucks PHOTO NO. 923

Push the plastic up to the strap and drill a 3/16 inch diameter hole in line with the hole in each strap.



Model Year 1999-2002 Trucks PHOTO NO. 924

Secure plastic to the straps with the 3/16 inch x 3/8 inch pop rivets from the mount kit bolt bag.



Model Year 1999-2002 Trucks PHOTO NO. 925

Fully tighten the two outside bolts into the tow hooks.

6. Lift the plastic splash shield diagonally through the rear frame weldment and bolt the front three holes to the vehicle with original hardware.

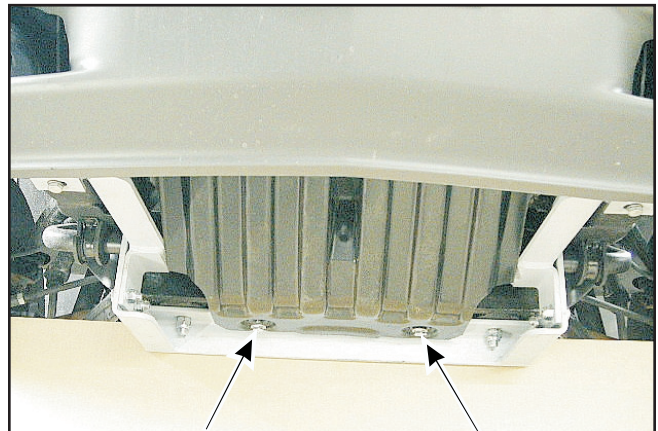


PHOTO NO. 916

Reassemble the rear of the splash shield to the vehicle through holes in the rear frame weldment with two M10 x 1.5 x 35 hex bolts and 3/8 inch flat washers from the mount kit bolt bag.

7. Fasten the mount plates of the prong weldment to holes in the front frame weldment with eight 5/8 inch x 1 3/4 inch hex bolts and lock nuts.

On model year 1999 to 2002 trucks, mount the prongs in the rear set of holes in the front frame.

On model year 2003 to 2010 trucks, mount the prongs in the front set of holes in the front frame to prevent interference between the snowplow lift frame and the truck bumper.



PHOTO NO. 920

Bottom edges of the prongs should measure 9 to 10 inches above the ground. Ideally, the prongs should lift the plow frame slightly when driving into the plow.

On model year 2003 to 2006 trucks and 2007 "Classic" series, a small section of the plastic bumper fascia must be trimmed ahead of each side plate of the prong weldment to eliminate interference.

Use a side cutter or similar cutting tool to remove about 3/4 inch of plastic in front of each plate.

Trim only the smallest amount of plastic required so the truck most nearly retains its original appearance.