

**VEHICLE INSTALLATION INSTRUCTIONS**  
**CHEV/GMC 4 X 4: 1988-1998 K1500-2500-3500**  
**1999 K1500-2500 W/7.4L ENGINE**  
**1999 K3500 (ALL MODELS)**

**Hiniker Company**  
**58766 240th St.**  
**P.O. BOX 3407**  
**Mankato, MN 56002**

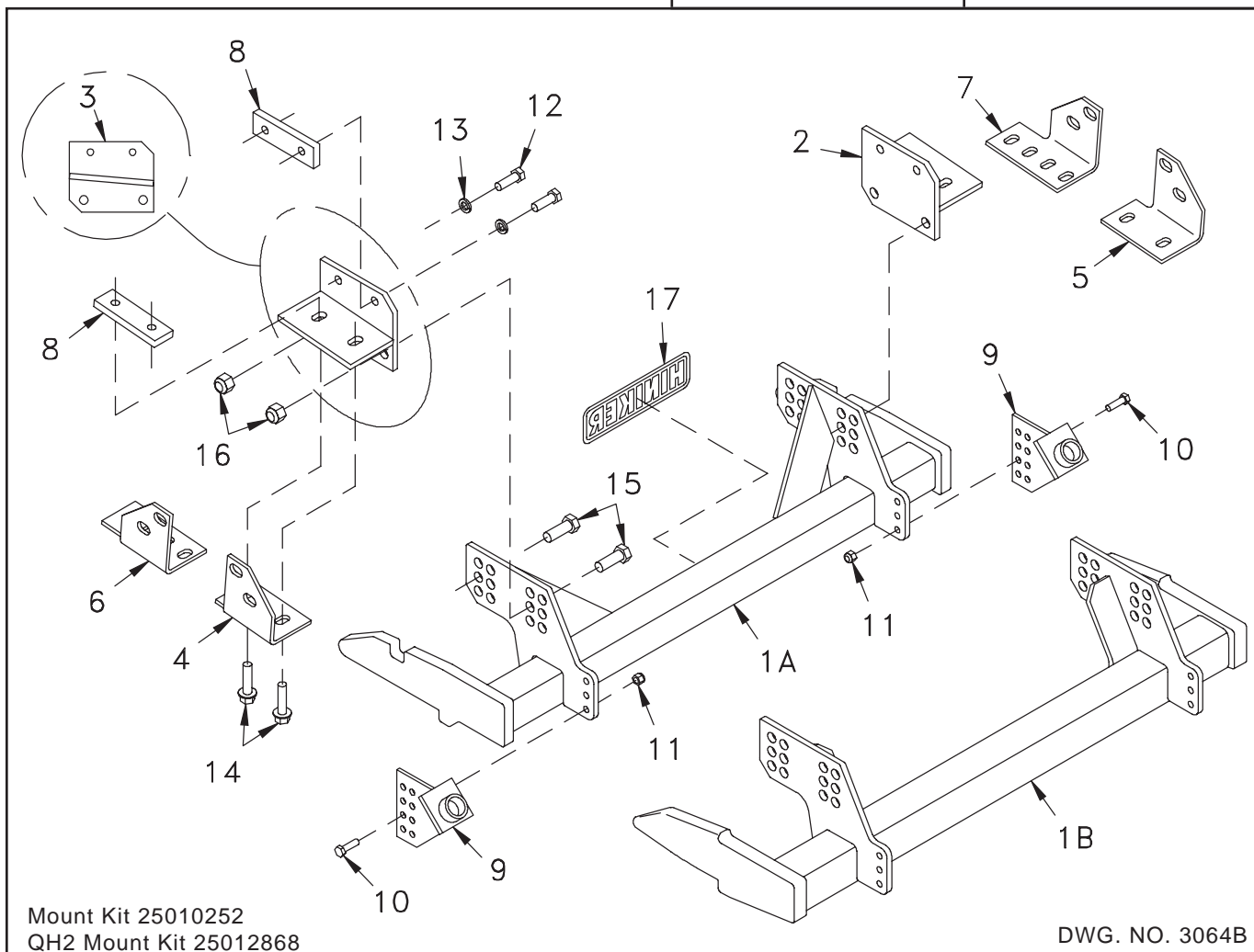
INSTRUCTION SHEET NO: 25013176

April 5, 2012



**IMPORTANT: Read the Snowplow Operator's Manual before assembling this kit.**

MINIMUM VEHICLE RECOMMENDATIONS	
MFR Snowplow Prep Package Prep Package Includes HD Alternator HD Battery HD Torsion Bars	REAR BALLAST - 500 lbs. when plow is attached. Secure Weight Behind Rear Wheels.



REF. NO.	PART NUMBER	DESCRIPTION	QTY.	REF. NO.	PART NUMBER	DESCRIPTION	QTY.
1A	25010293	Prong Weldment	1	10	950-001-106	Hex Head Cap Screw 3/8-16 x 1 1/4 Gr. 5	4
1B	25012909	Prong Weldment - QH2	1	11	951-003-002	Lock Nut 3/8-16 Nylon Insert	4
2	25010370	RH Bracket Assembly	1	12	950-001-125	Hex Head Cap Screw 1/2-13 x 1 1/2 Gr. 5	4
3	25010371	LH Bracket Assembly	1	13	952-001-004	Lock Washer 1/2 Inch	4
4	25010296	LH Mount Bracket	1	14	950-002-016	Whiz Bolt 1/2-13 x 2 Gr. 5	4
5	25010297	RH Mount Bracket	1	15	950-001-132	Hex Head Cap Screw 5/8-11 x 1 3/4 Gr. 5	4
6	25010298	LH Mount Bracket	1	16	060756	Lock Nut 5/8-11 Nylon Insert	4
7	25010299	RH Mount Bracket	1	17	25010008	Hiniker Decal	1
8	25010300	Nut Bar	4		25011166	Bolt Bag	1
9	25010326	Stop Weldment	2				

All hardware should be tightened only enough to ensure safety during assembly. Fully tighten all hardware after entire assembly is completed.

**GRADE 5 TYPE B & F LOCK NUT TORQUES**

Size	Ft-lbs.	N-m
5/16"	13-18	17-25
3/8"	23-33	31-44
1/2"	58-82	79-112
5/8"	117-165	158-223

**GRADE 5 BOLT TORQUES\***

Size	Ft-lbs.	N-m
1/4"	8-12	11-16
3/8"	29-41	39-56
1/2"	73-103	99-140
5/8"	146-206	198-279

\* applications without lock nuts

NOTE: Two sets of LH and RH brackets have been supplied with this kit to accommodate variations in vehicle frames. Select the brackets that match your vehicle and discard the unused set.

NOTE: The air dam under the vehicle's bumper has been removed in the following photographs for clarity purposes. The air dam should not have to be removed when installing this kit or when using the snowplow.

1. Remove tow hooks, if installed, and nut bars from inside of boxed frame rails. Redrill holes in the vehicle frame with a 17/32 inch drill bit.
2. Locate the set of three bolts that attach bumper brackets to the vehicle side rails on each side of the vehicle.

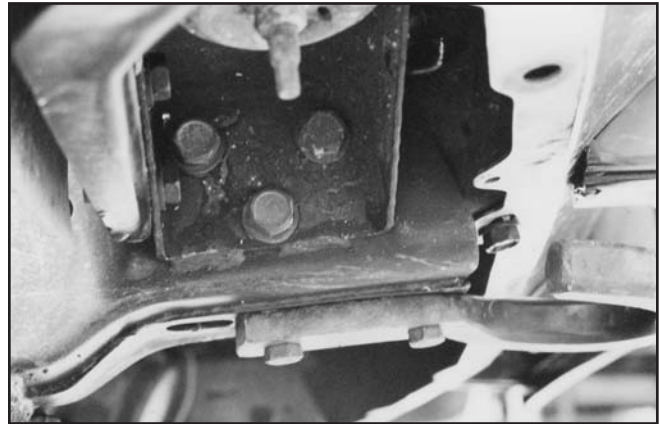


PHOTO NO. 3506

Select the set of LH and RH brackets that match two of three side bolts and the tow hook holes in the bottom of the rails.

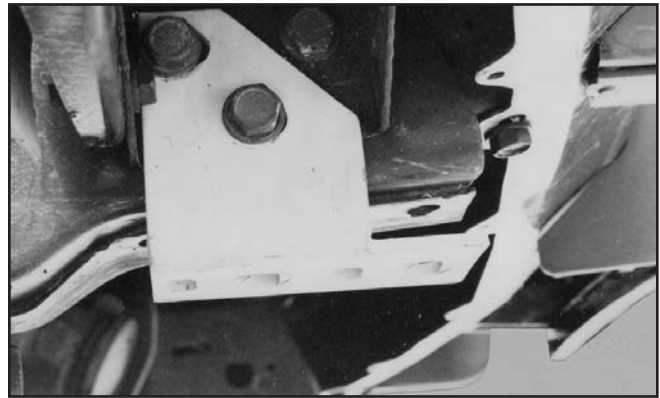


PHOTO NO. 3507

Remove two side bolts and loosely install LH and RH brackets to the outside of the vehicle rails.



**IMPORTANT: Reversed installation of LH and RH welded brackets will result in incorrect orientation of attachment prongs. Identify LH and RH welded brackets by the lower leading clipped corners of the side plates when the two larger holes are toward the ground and the two smaller holes are up against the vehicle frame, or by the upward slope of the bottom plates toward the front of the vehicle.**

3. Install LH and RH welded brackets between the vehicle rails and LH and RH formed brackets, such that the larger holes are toward the ground and the smaller holes are against the vehicle rails.

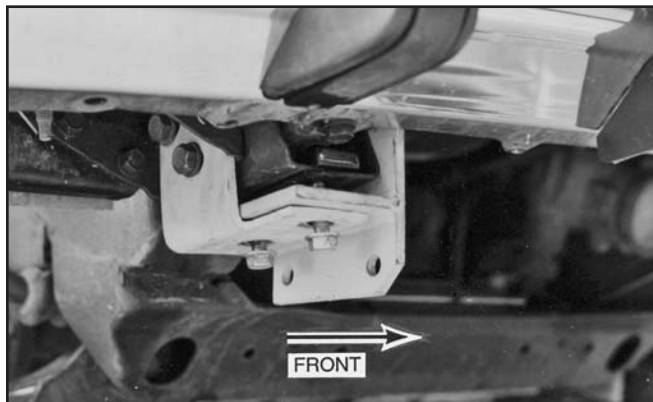


PHOTO NO. 3508

Slide a nut bar along the bottom of the boxed vehicle rails to match holes in brackets and vehicle rails, and secure with 1/2 inch X 2 inch hex whiz bolts.

NOTE: Tow hooks should be reinstalled at this point, if included.

NOTE: Some vehicles may require additional clearance for welded brackets due to interference with the vehicle's splash guard.

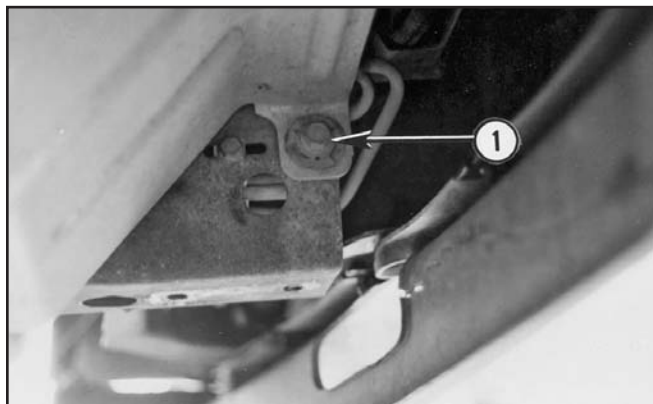


PHOTO NO. 3512

Drill new holes in the vehicle frame and reattach the splash guard bolts at location 1 in a higher position to obtain additional clearance.



**CAUTION:** Some GM vehicles have a small cooling line inside the boxed vehicle rails. Protect cooling lines before drilling holes in the frame by inserting a backing shim between lines and vehicle frame.

4. Secure hardware and drill two 17/32 inch diameter holes into the vehicle rail through existing holes in welded brackets.



PHOTO NO. 3509

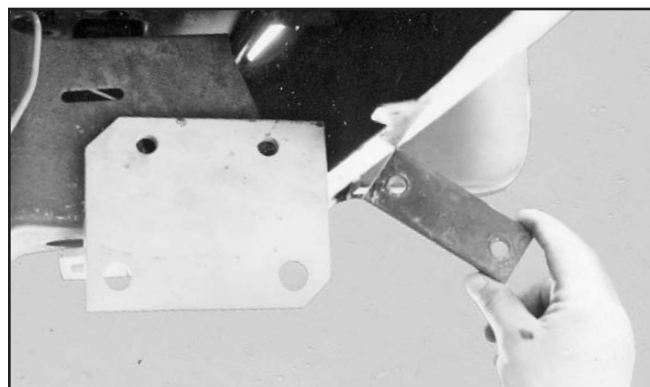


PHOTO NO. 3513

Slide a nut bar along the inside of the rails and fasten brackets with 1/2 inch X 1 1/2 inch hex bolts and lock washers.

5. Bolt prong weldment to brackets on the vehicle frame with 5/8 inch X 1-3/4 inch hex bolts and lock nuts. Hardware holding existing brackets on the vehicle might need to be loosened first to fit prong weldment.

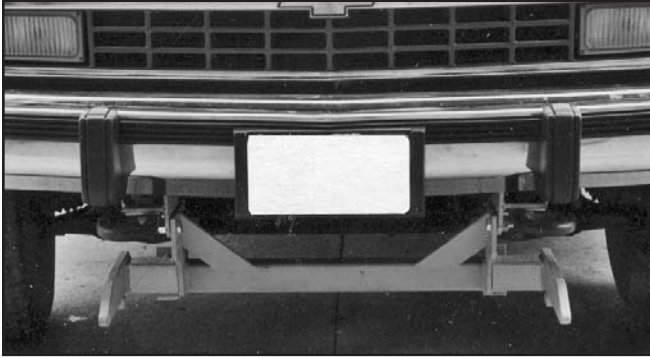


PHOTO NO. 3510

Bottom edges of the prongs should measure about 10 inches above the ground. Ideally, the prongs should lift the plow frame slightly when attaching the plow.

6. Fasten two stop weldments through the rear groups of holes in the prong weldment mount plates with 3/8 inch X 1-1/4 inch hex bolts and lock nuts such that the round plugs of the stop weldments assemble into existing holes in the vehicle undercarriage.

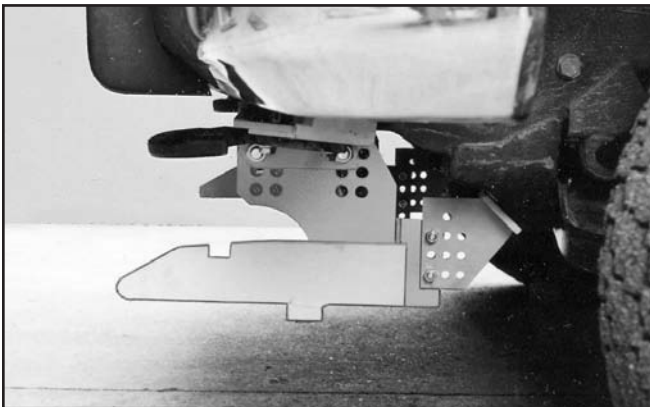


PHOTO NO. 3511

7. Fully tighten all hardware.