

VEHICLE INSTALLATION INSTRUCTIONS  
 CHEV/GMC 4 X 4: 1973-1987 K10-20-30/  
 V1500-2500-3500

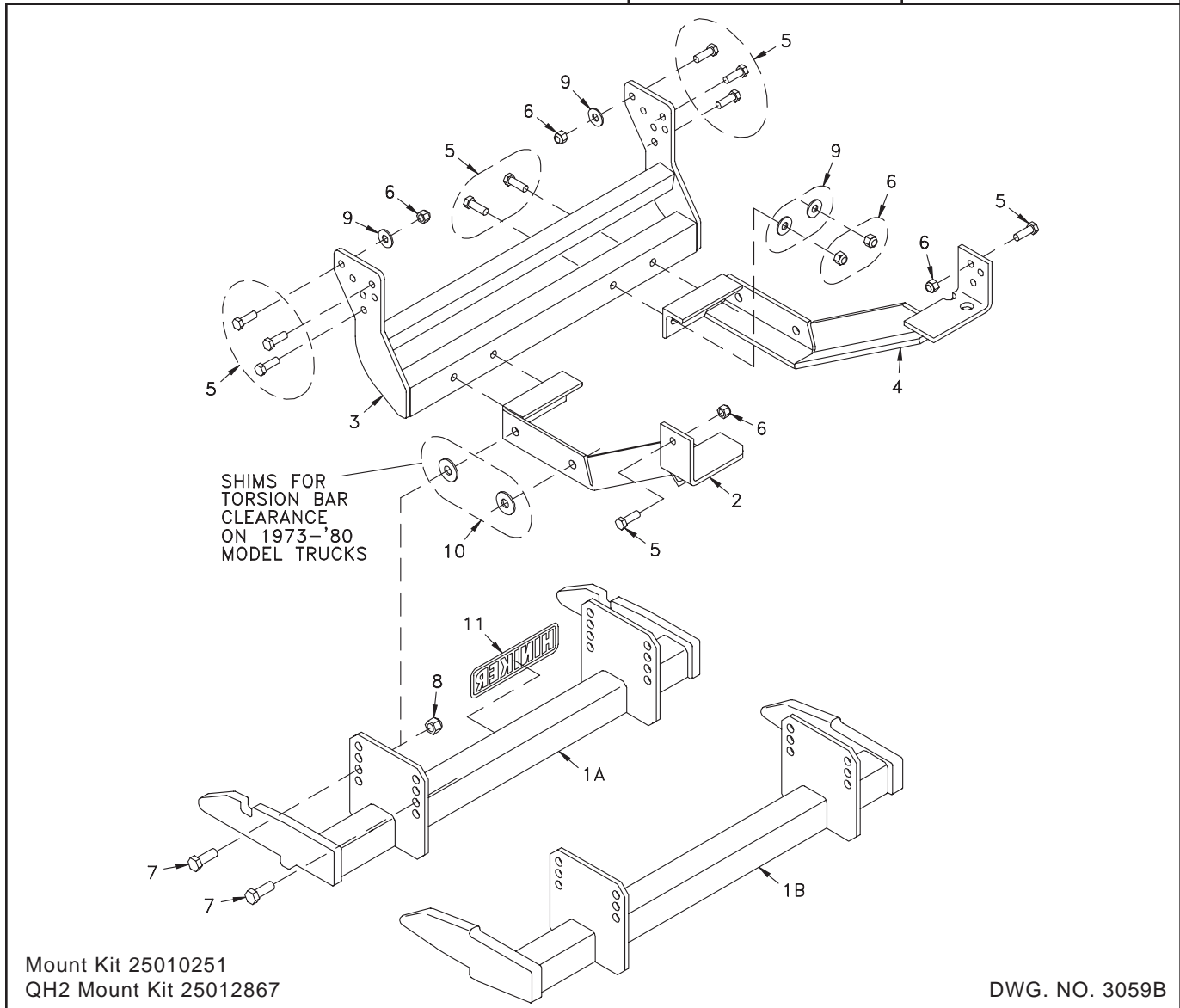
Hiniker Company  
 58766 240th St.  
 P.O. BOX 3407  
 Mankato, MN 56002

INSTRUCTION SHEET NO: 25013175

April 5, 2012

**IMPORTANT:** Read the Snowplow Operator's Manual before assembling this kit.

MINIMUM VEHICLE RECOMMENDATIONS	
HD Alternator HD Battery HD Front Springs	REAR BALLAST - 500 lbs. when plow is attached. Secure Weight Behind Rear Wheels.



REF. NO.	PART NUMBER	DESCRIPTION	QTY.	REF. NO.	PART NUMBER	DESCRIPTION	QTY.
1A	25010130	Prong Weldment	1	7	950-001-132	Hex Head Cap Screw 5/8-11 x 1 3/4 Gr. 5	4
1B	25012905	Prong Weldment - QH2	1	8	060756	Lock Nut 5/8-11 Nylon Insert	4
2	25010364	LH Arm Weldment	1	9	952-002-005	Standard Flat Washer 1/2 Inch	10
3	25010141	Front Mount Weldment	1	10	952-002-007	Standard Flat Washer 5/8 Inch	2
4	25010365	RH Arm Weldment	1	11	25010008	Hiniker Decal	1
5	950-001-125	Hex Head Cap Screw 1/2-13 x 1 1/2 Gr. 5	12		25011171	Bolt Bag	1
6	951-003-009	Lock Nut 1/2-13 Nylon Insert	12				

All hardware should be tightened only enough to ensure safety during assembly. Fully tighten all hardware after entire assembly is completed.

**GRADE 5 TYPE B & F LOCK NUT TORQUES**

Size	Ft-lbs.	N-m
5/16"	13-18	17-25
3/8"	23-33	31-44
1/2"	58-82	79-112
5/8"	117-165	158-223

**GRADE 5 BOLT TORQUES\***

Size	Ft-lbs.	N-m
1/4"	8-12	11-16
3/8"	29-41	39-56
1/2"	73-103	99-140
5/8"	146-206	198-279

\* applications without lock nuts

1. Remove the front bumper from the truck.
2. Bolt front mount bracket into existing holes in the bumper mount on the truck, using 1/2 inch X 1-1/2 inch hex bolts, flat washers and lock nuts.



PHOTO NO. 3454

Drill one 17/32 inch diameter hole through each truck rail, using the top empty hole of the bracket plate as a guide. Install 1/2 inch X 1-1/2 inch hex bolts in drilled holes.

Install bolts from the inside out if it appears they will interfere with bumper hardware later.

3. Locate LH and RH angle arms.



PHOTO NO. 3455

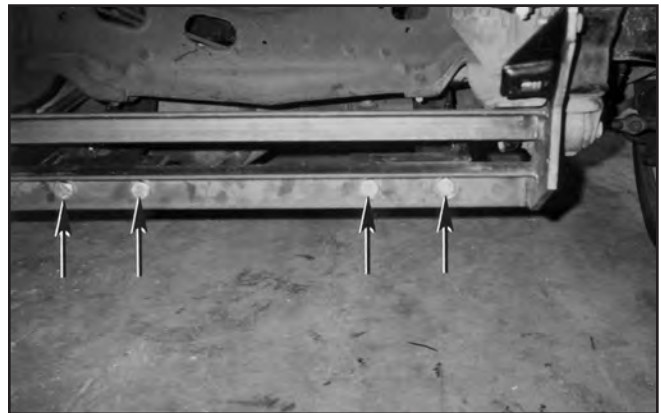


PHOTO NO. 3456

Loosely bolt angle arms to front mount bracket with 1/2 inch X 1-1/2 inch hex bolts, flat washers and lock nuts.

Maintain a minimum 1/8 inch space between the torsion bar and the angle arms by sliding the angle arms inward in their slots.



PHOTO NO. 3457

Clamp mount plates at the rear of angle arms to side rails of truck. Use the existing hole in angle arm plate as a guide to drill one 17/32 inch diameter hole in each rail.

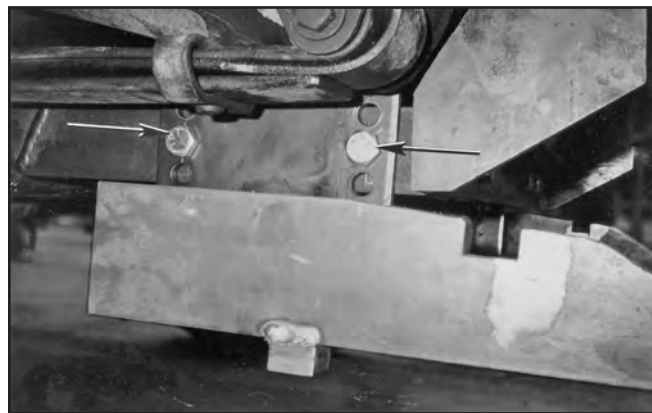


PHOTO NO. 3459

Bottom edges of the prongs should measure about 10 inches above the ground. Ideally, the prongs should lift the plow frame slightly when attaching the plow.

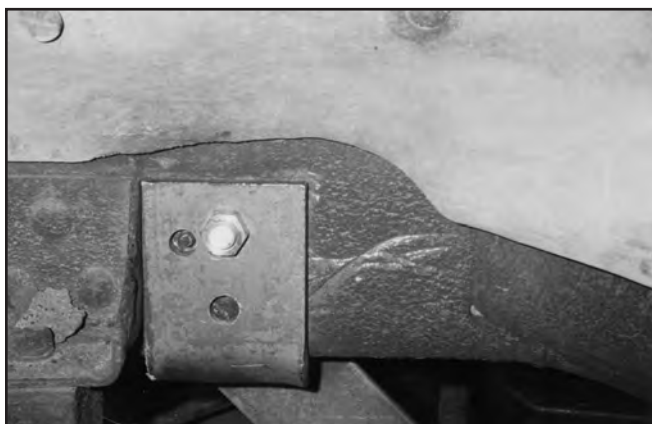


PHOTO NO. 3458

Fasten angle arms to vehicle frame with 1/2 inch X 1-1/2 inch hex bolts and 1/2 inch lock nuts.

4. Fasten mount plates of prong weldment to holes in angle arms with 5/8 inch X 1-3/4 inch hex bolts and 5/8 inch lock nuts.

Install 5/8 inch flat washers between the mount plate of the prong weldment and the driver-side angle arm, if necessary, to maintain a 1/8 inch space between the angle arm and the torsion bar.



PHOTO NO. 3460

5. Fully tighten all hardware.
6. Reattach the front bumper onto the truck with original hardware.