

VEHICLE INSTALLATION INSTRUCTIONS FOR:
 FORD 4x4: 2008 - 2016 SUPER DUTY
 F250 - 350 - 450 - 550

Hiniker Company
 58766 240th St.
 P.O. Box 3407
 Mankato, MN 56002

INSTRUCTION SHEET NO: 25013170 Rev. B

September 7, 2016

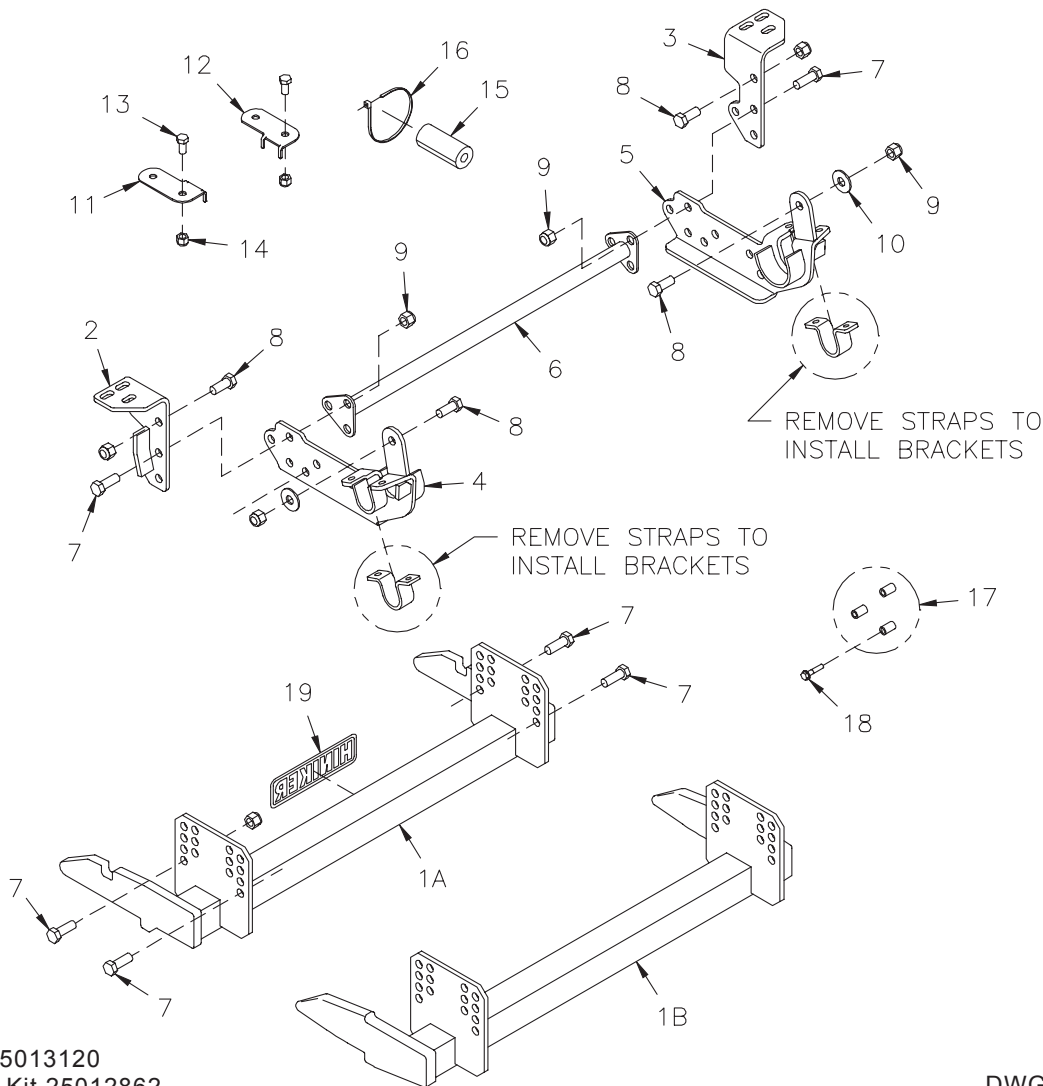


IMPORTANT: Read the Snowplow
 Operator's Manual before assembling
 this kit.

Minimum Vehicle Recommendations

MFR Snowplow
Prep Package

REAR BALLAST - 500 lbs. when
 plow is attached. Secure Weight
 Behind Rear Wheels.



Mount Kit 25013120
 QH2 Mount Kit 25012862

DWG. NO. 6614B

REF. NO.	PART NUMBER	DESCRIPTION	QTY.	REF. NO.	PART NUMBER	DESCRIPTION	QTY.
1A	25013277	Prong Weldment	1	11	25012255	LH Headlight Extension Bracket	1
1B	25013276	Prong Weldment - QH2	1	12	25012254	RH Headlight Extension Bracket	1
2	25012881	LH Front Bracket Weldment	1	13	950-001-231	Hex Head Cap Screw 1/2-13 x 1 Gr. 5	2
3	25012880	RH Front Bracket Weldment	1	14	951-003-009	Lock Nut 1/2-13 Nylon Insert	2
4	25012882	LH Side Bracket Weldment	1	15	39107001	Foam Grommet	1
5	25012883	RH Side Bracket Weldment	1	16	367-001-014	Plastic Tie, 8"	1
6	25012248	Cross Tube Weldment	1	17	25012803	Standoff Spacer	3
7	950-001-132	Hex Head Cap Screw 5/8-11 x 1 3/4 Gr. 5	14	18	950-011-061	Hex Flange Cap Screw M8 x 1.25 x 40 CL. 10.9	3
8	950-001-087	Hex Head Cap Screw 5/8-11 x 1 1/2 Gr. 5	4	19	25010008	Hiniker Decal	1
9	060756	Lock Nut 5/8-11 Nylon Insert	18		25012258	Bolt Bag	1
10	952-002-007	Flat Washer, 5/8 Inch	2				

All hardware should be tightened only enough to ensure safety during assembly. Fully tighten all hardware after entire assembly is completed.

GRADE 5 TYPE B & F LOCK NUT TORQUE VALUES

Size	Ft-lbs.	N-m
5/16"	13-18	17-25
3/8"	23-33	31-44
1/2"	58-82	79-112
5/8"	117-165	158-223

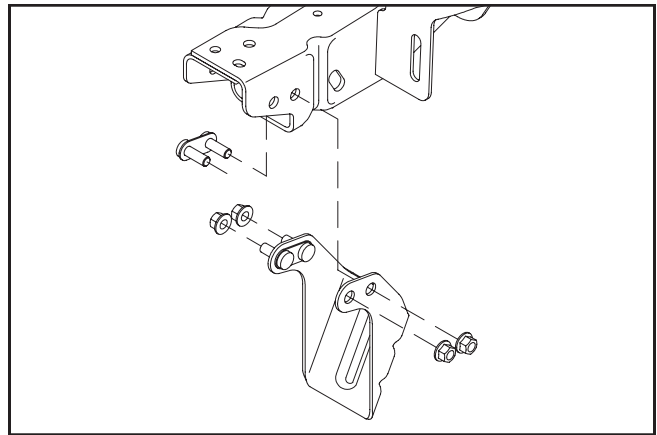
GRADE 5 BOLT TORQUE VALUES*

Size	Ft-lbs.	N-m
1/4"	8-12	11-16
3/8"	29-41	39-56
1/2"	73-103	99-140
5/8"	146-206	198-279
* applications without lock nuts		

1. Prepare the front bumper for removal from the truck, as follows:
 - Unfasten the rubber splash shield from the lower edge of the bumper assembly by prying loose three plastic barbed retainers.
 - Disconnect the engine block heater cord from the inside of the bumper and from the front of the RH frame rail by prying loose plastic barbs from their retaining holes.
 - Pull all barbed retainers to release wiring harnesses along the inside length of the bumper.
 - Unplug wiring to the fog lights, if equipped.

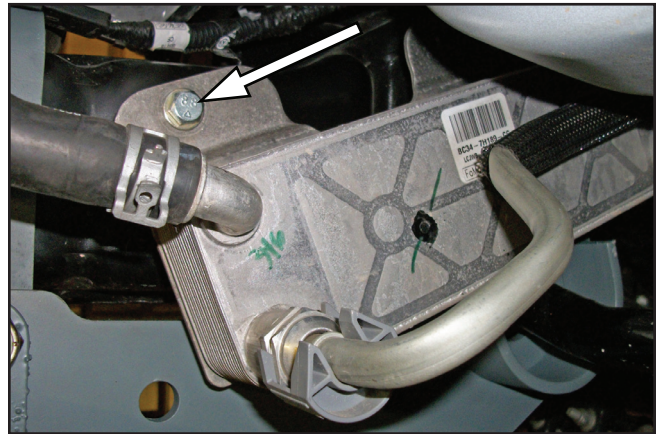
Remove the front bumper from the truck by unbolting six screws. Save the hardware for reinstallation.

Unbolt channel brackets from the vehicle frame rails and return to the vehicle owner for reinstallation if the mount kit is removed from the truck in the future.



DWG NO. 6561

2. On model year 2011 - 2016 trucks, remove three bolts holding the oil cooler to the inside of the RH frame rail and carefully pull the cooler away from the rail.



Passenger Side Oil Cooler

PHOTO NO. 1000354A

The three bolts will be replaced with longer bolts furnished in the kit



Radiator Hose Retainer Barbs

PHOTO NO. 1000358A

Note: Temporarily detaching two barbed retainers holding the lower radiator hose to the vehicle crossframe will provide more access to fasteners for installing mount brackets.

3. Unbolt both tow hooks from the vehicle by removing three bolts per side.

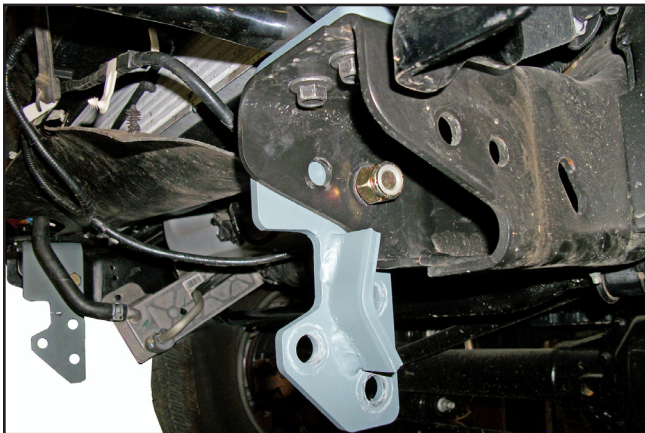


PHOTO NO. 1000382

Place the LH and RH front brackets from the kit over the tops of the LH and RH vehicle frame rails so that holes in the brackets match holes in the rails. Set the tow hooks on top of the brackets, then insert the bolts through holes in the vehicle frame and mount brackets before rethreading them into the tow hooks.

Insert 5/8 inch x 1 1/2 inch hex bolts through holes in the vertical faces of the two brackets and frame rails. Retain the bolts with 5/8 inch lock nuts.

4. On one side of the vehicle at a time, remove the U-shaped retaining strap from the sway bar bushing by loosening two nuts.

Straps will be replaced by retainers on the mount kit brackets and should be returned to the vehicle owner for reinstallation if the mount kit is removed from the truck in the future.

Install the LH and RH side brackets according to the following procedure.

Lift the side bracket to the bottom of the vehicle frame rail so that bolts from the vehicle pass through holes in the bracket, and the sway bar bushing is recaptured in the bracket strap. Thread the original nuts back onto the bolts to hold the bracket to the vehicle.

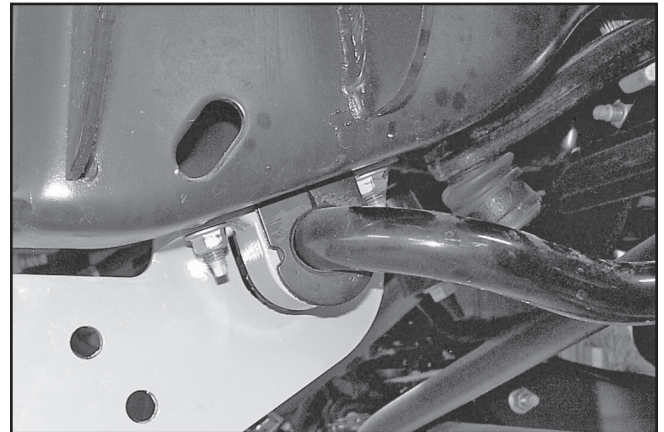


PHOTO NO. DCP1121

Insert a 5/8 inch x 1 1/2 inch hex bolt through the rear tab of the side bracket and into the vehicle frame. Retain the bolt with a flat washer and lock nut inside the frame.

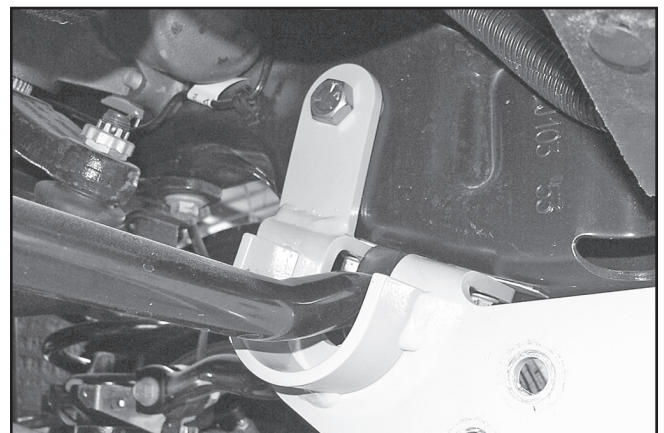


PHOTO NO. DCP1124

After both side brackets have been fastened to the vehicle at the rear, bolt the cross tube weldment between the front sets of holes by inserting 5/8 inch x 1 3/4 inch hex bolts through holes in the front brackets, side brackets and cross tube end plates. Secure the bolts with 5/8 inch lock nuts.

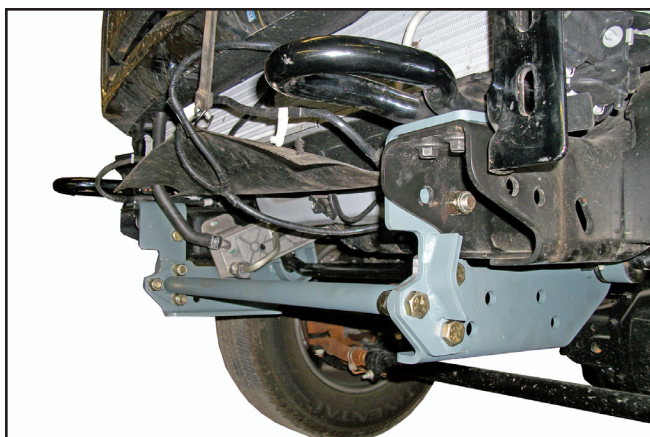
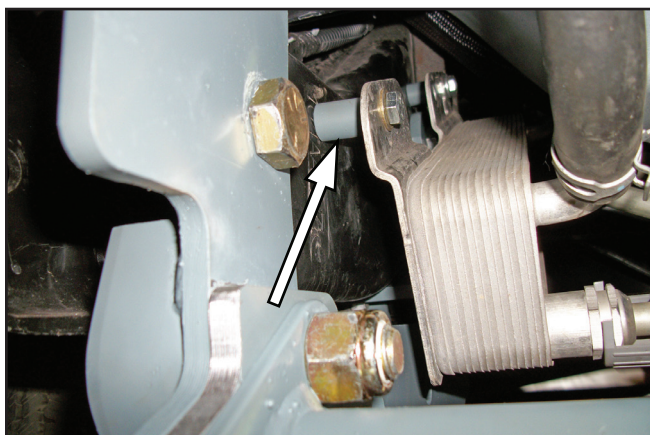


PHOTO NO. 1000373

Fully tighten all hardware to specified torque values, starting with the rear bolts and working forward.

5. For trucks requiring the oil cooler to be reassembled to the frame rail, locate the three 8mm flange head hex bolts and standoff spacers in the bolt bag.

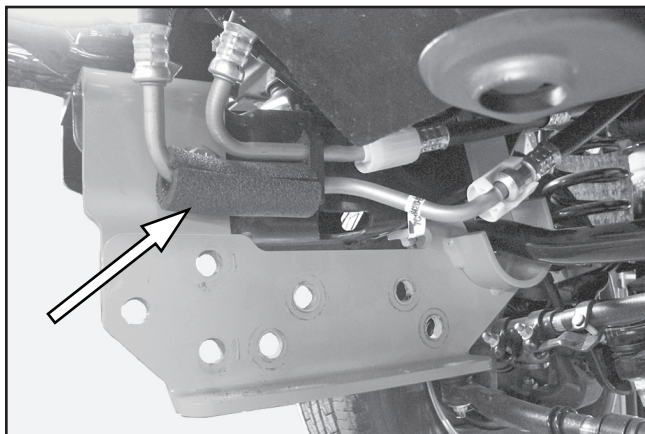


Oil Cooler Standoff Spacer

PHOTO NO. 1000361A

Remount the oil cooler to the RH frame rail using the new longer bolts, with standoff spacers between the cooler and the frame.

6. On model year 2008-2010 trucks, wrap the foam grommet and plastic tie strap around the cooling line on the passenger side of the vehicle to protect the line from rubbing on the bolt head.



Grommet On 2008-10 Truck

PHOTO NO. DCP1133A

On model year 2011 - 2016 trucks, wrap the grommet and tie strap around the cooling line on the driver side of the vehicle to protect the line from rubbing on the edge of the mount bracket.

7. Fasten the mount plates of the prong weldment to the holes in the LH and RH side brackets with eight 5/8 Inch x 1 3/4 inch hex bolts and lock nuts.

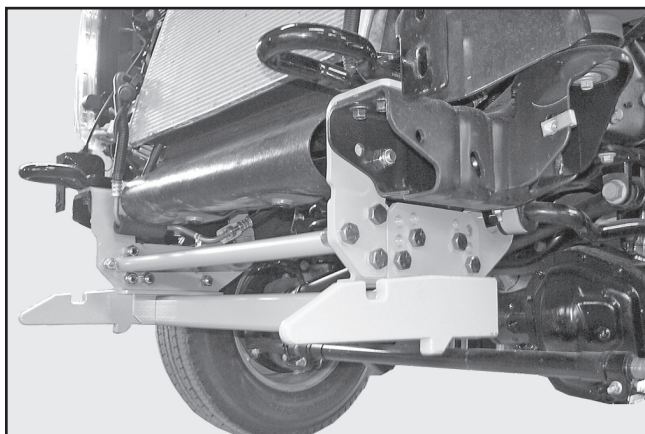


PHOTO NO. DCP1108

Bottom edges of the prongs should measure about 10 inches above the ground. Ideally, the prongs should lift the plow frame slightly when driving into the plow.

8. Remove approximately 4 inches of material from the bottom of the air dam on the truck bumper in the area around the 36 inch prong centers to provide initial clearance for the prongs while reinstalling the bumper.

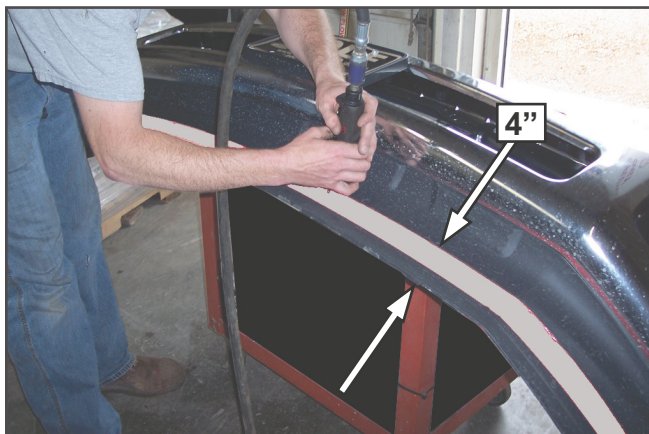


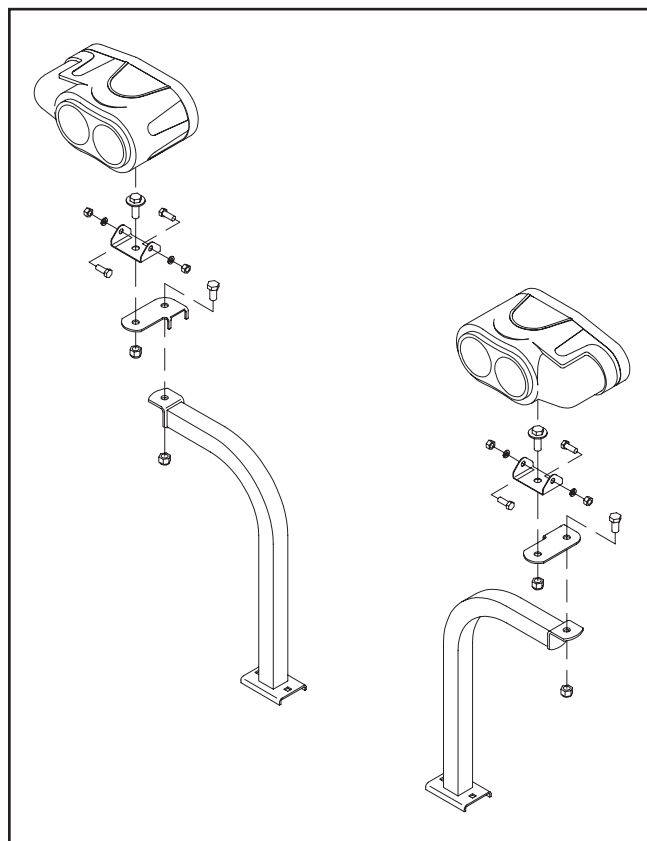
PHOTO NO. 1003360A

Remount the bumper onto the truck using the original hardware. Push the bumper up as far as possible before final tightening. Trim more material from the air dam for fit and styling considerations, if required.

Reconnect the fog lights, engine block heater cord, rubber splash shield and all other fasteners undone for bumper removal.

Headlight Extension Brackets

Extension brackets are required to move the plow lights forward on model year 2008-2010 trucks to avoid interference between the back of the headlights and the truck grill when opening the hood with the plow attached.



DWG. NO. 6615

1. Bolt the LH and RH extension brackets to the plow headlight brackets with 1/2 inch x 1 inch hex bolts and lock nuts.
2. Fasten the LH and RH headlights onto the brackets with hardware supplied with the lights.