

Hiniker Company
 58766 240th St.
 P.O. Box 3407
 Mankato, MN 56002

VEHICLE INSTALLATION INSTRUCTIONS FOR:
 TOYOTA TUNDRA 4X4: 2007 & NEWER

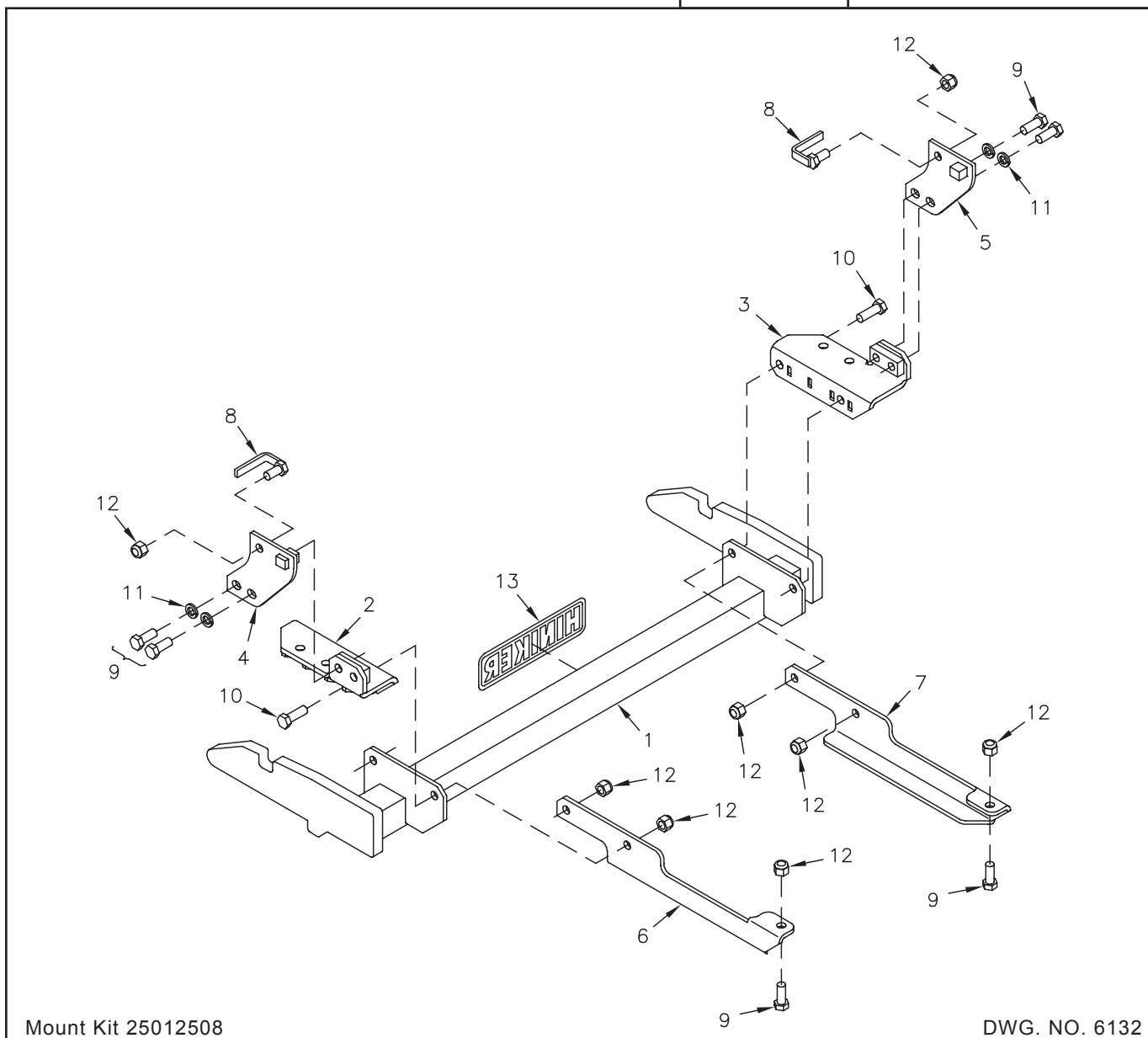
INSTRUCTION SHEET NO: 25012507 Rev. A

November 9, 2007



IMPORTANT: Read the Snowplow Operator's Manual before assembling this kit.

| Minimum Vehicle Recommendations | |
|---------------------------------|--|
| MFR Snowplow Prep Package | REAR BALLAST - 300 lbs. when plow is attached. Secure Weight Behind Rear Wheels. |



Mount Kit 25012508

DWG. NO. 6132

| REF. NO. | PART NUMBER | DESCRIPTION | QTY. | REF. NO. | PART NUMBER | DESCRIPTION | QTY. |
|----------|-------------|------------------------|------|----------|-------------|---|------|
| 1 | 25012492 | Prong Weldment | 1 | 8 | 25012500 | Bolt Weldment | 2 |
| 2 | 25012494 | LH Bracket Weldment | 1 | 9 | 950-001-111 | Hex Head Cap Screw 1/2-13 x 1 1/4 Gr. 5 | 6 |
| 3 | 25012499 | RH Bracket Weldment | 1 | 10 | 950-001-125 | Hex Head Cap Screw 1/2-13 x 1 1/2 Gr. 5 | 4 |
| 4 | 25012504 | LH Side Plate Weldment | 1 | 11 | 952-001-004 | Lock Washer 1/2 Inch | 4 |
| 5 | 25012505 | RH Side Plate Weldment | 1 | 12 | 951-003-009 | Lock Nut 1/2-13 Nylon Insert | 8 |
| 6 | 25012552 | LH Side Rear Bracket | 1 | 13 | 25010008 | Hiniker Decal | 1 |
| 7 | 25012553 | RH Side Rear Bracket | 1 | | 25012506 | Bolt Bag | 1 |

All hardware should be tightened only enough to ensure safety during assembly. Fully tighten all hardware after entire assembly is completed.

GRADE 5 TYPE B & F LOCK NUT TORQUE VALUES

| Size | Ft-lbs. | N-m |
|-------|---------|---------|
| 5/16" | 13-18 | 17-25 |
| 3/8" | 23-33 | 31-44 |
| 1/2" | 58-82 | 79-112 |
| 5/8" | 117-165 | 158-223 |

GRADE 5 BOLT TORQUE VALUES*

| Size | Ft-lbs. | N-m |
|----------------------------------|---------|---------|
| 1/4" | 8-12 | 11-16 |
| 3/8" | 29-41 | 39-56 |
| 1/2" | 73-103 | 99-140 |
| 5/8" | 146-206 | 198-279 |
| * applications without lock nuts | | |

1. Unbolt the tow hooks from the frame rails at the front of the vehicle and save the hardware for installation of the mount kit bracket.

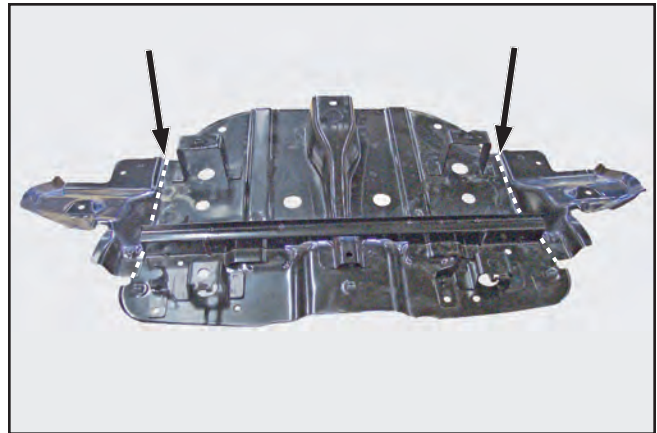
The tow hooks cannot be reinstalled with this kit and should be returned to the vehicle owner for reinstallation if the mount kit is removed from the truck in the future.

2. Use a small cutting disc to trim the front corners off both sides of the truck splash shield along the lines shown in the following two photos.



Shield On Truck

PHOTO NO. DCP1404



Shield Removed From Truck

PHOTO NO. DCP1411

Raise the LH and RH brackets to the bottom of the frame rails and loosely thread two tow hook bolts through holes in the brackets and into the rails to hold the brackets in place.

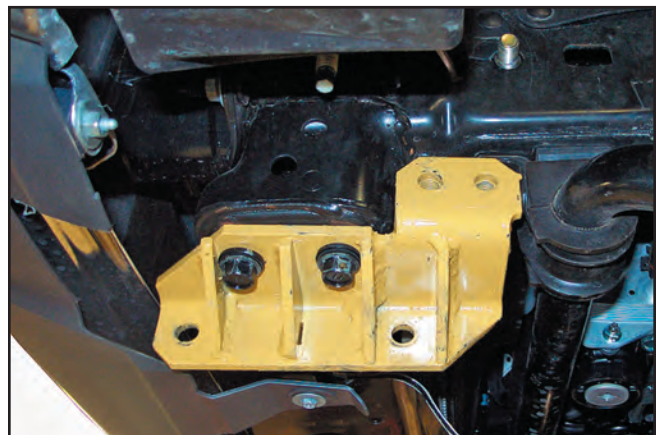


PHOTO NO. DCP1570

3. Begin installation of the LH and RH side plate weldments by first looping a bolt weldment through holes in the outside of the vehicle rails.

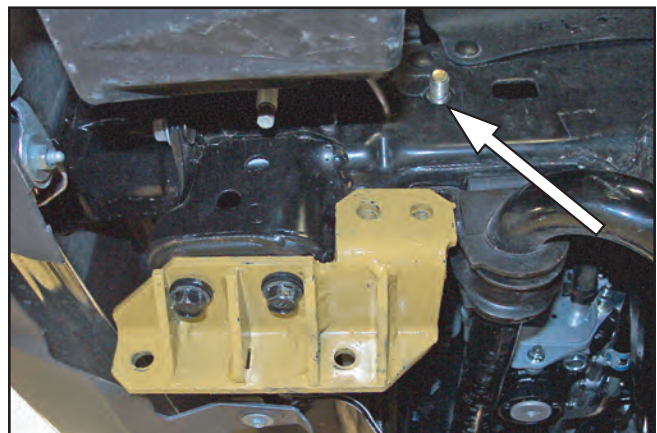


PHOTO NO. DCP1571

Slide the side plate onto the bolt so that the stop block on the plate enters the rectangular hole in the rail, then thread a 1/2 inch lock nut onto the bolt to secure the plate.

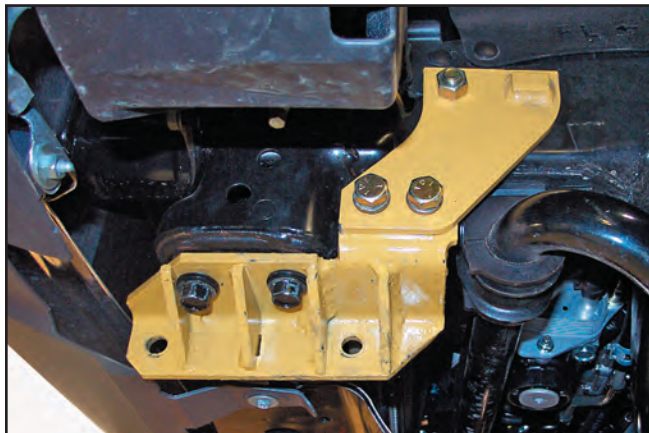


PHOTO NO. DCP1569

Fasten the lower holes of the side plates to threaded holes in the LH and RH brackets with two 1/2 inch x 1 1/4 inch hex bolts and lock washers per side.

Fully tighten the four tow hook bolts into the vehicle frame.

4. Lift the prong weldment up between the brackets on the vehicle, then insert four 1/2 inch x 1 1/2 hex bolts directed from the outside in.

Slide the LH and RH rear brackets onto the ends of the bolts before loosely threading lock nuts onto the bolts.



PHOTO NO. DCP1560

Push the rear of the brackets up against the bottom of the vehicle frame and outward in the recessed pocket of the frame before drilling 1/2 inch diameter holes into the vehicle frame through holes in the brackets.

Fasten the brackets to the frame with 1/2 inch x 1 1/4 inch hex bolts and lock nuts.



PHOTO NO. DCP1559

Finish installation of the kit by fully tightening all hardware to the specified torque values.

The bottom edges of the prongs should measure about 10 inches above the ground.