

Hiniker Company  
 58766 240th St.  
 P.O. Box 3407  
 Mankato, MN 56002

VEHICLE INSTALLATION INSTRUCTIONS FOR:  
 JEEP WRANGLER 4x4: 1997-2006

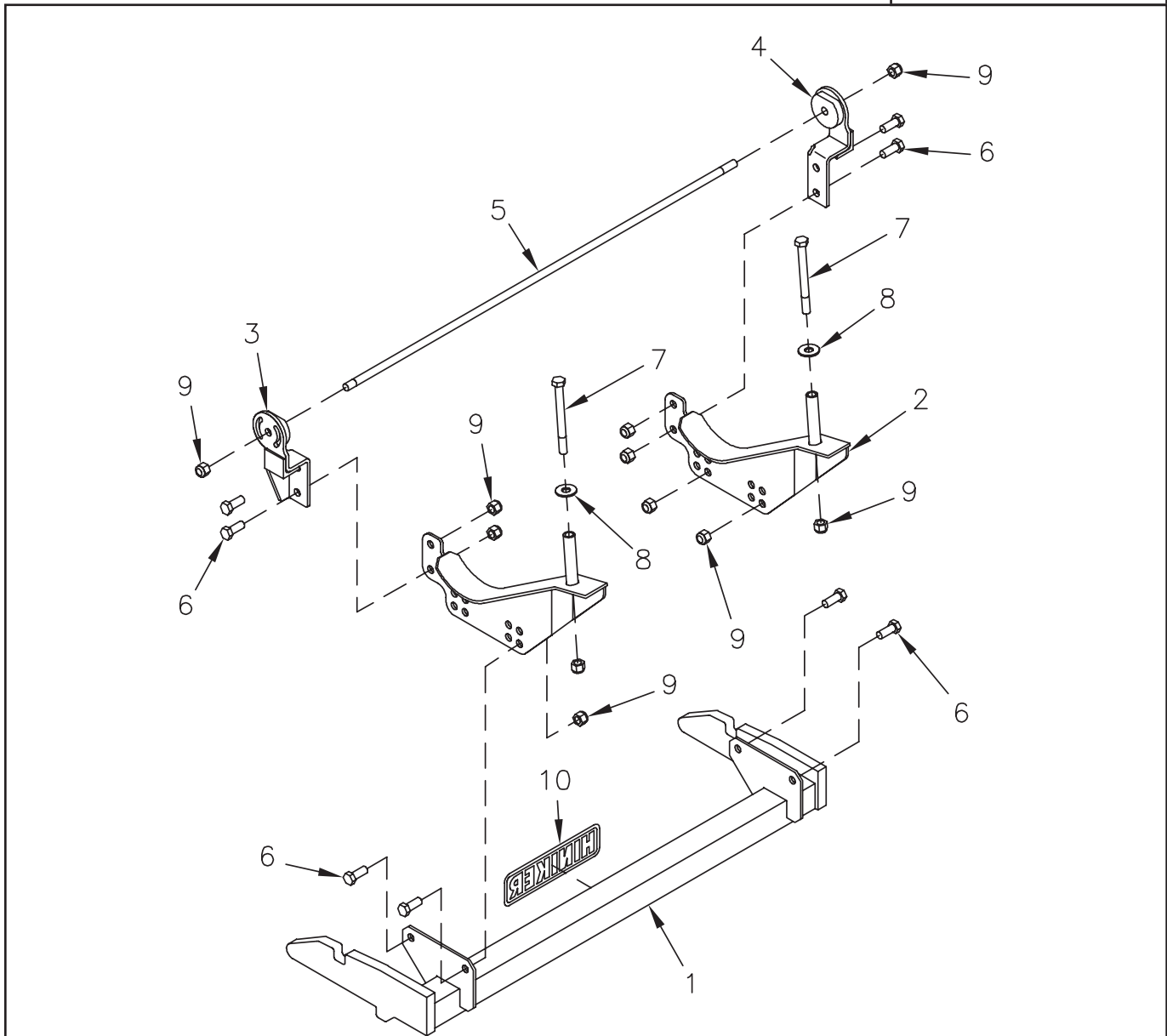
INSTRUCTION SHEET NO: 25012180 Rev. B

January 14, 2008



**IMPORTANT:** Read the Snowplow Operator's Manual before assembling this kit.

REAR BALLAST - 300 Lbs. when plow is attached. Secure weight behind the rear wheels.



Mount Kit 25012182

DWG. NO. 5869

REF. NO.	PART NUMBER	DESCRIPTION	QTY.	REF. NO.	PART NUMBER	DESCRIPTION	QTY.
1	25012174	Prong Weldment	1	7	950-001-271	Hex Head Cap Screw 1/2-13 x 5 1/4 Gr. 8	2
2	25012175	Side Bracket Weldment	2	8	952-004-067	Flat Washer, 1/2 Inch Hardened	2
3	25012176	LH Front Bracket Weldment	1	9	951-003-009	Lock Nut 1/2-13 Nylon Insert	12
4	25012177	RH Front Bracket Weldment	1	10	25010008	Hiniker Decal	1
5	25012178	Threaded Rod	1		25012181	Bolt Bag	1
6	950-001-111	Hex Head Cap Screw 1/2-13 x 1 1/4 Gr. 5	8				

All hardware should be tightened only enough to ensure safety during assembly. Fully tighten all hardware after entire assembly is completed.

**GRADE 5 TYPE B & F LOCK NUT TORQUE VALUES**

Size	Ft-lbs.	N-m
5/16"	13-18	17-25
3/8"	23-33	31-44
1/2"	58-82	79-112
5/8"	117-165	158-223

**GRADE 5 BOLT TORQUE VALUES\***

Size	Ft-lbs.	N-m
1/4"	8-12	11-16
3/8"	29-41	39-56
1/2"	73-103	99-140
5/8"	146-206	198-279
* applications without lock nuts		

1. Remove an end cap from one end of the vehicle bumper by removing three screws to provide access for installing mount kit components. Save the end cap and screws for reinstallation later.
2. Place a 1/2 inch flat washer under the head of two 1/2 inch x 5 1/4 inch hex bolts, then insert bolts from the top down through holes in both vehicle rails.

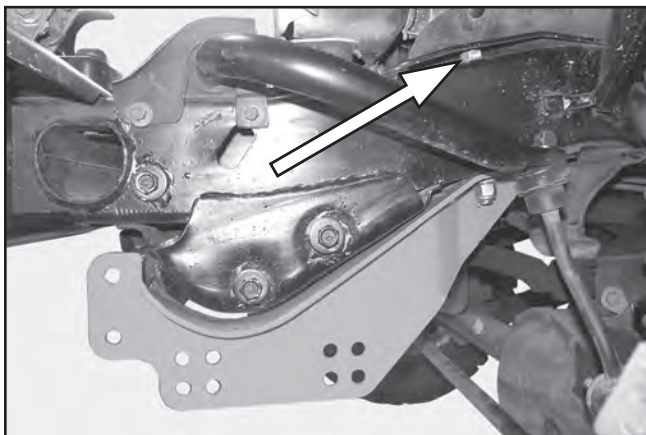


PHOTO NO. DCP0708

Raise side bracket weldments to the bottom of the rails so that bolts are through the bushings on the brackets. Secure brackets to the rails with 1/2 inch lock nuts.

3. Fully thread a 1/2 inch lock nut onto the end of the threaded rod with the shorter thread length.

Install the LH and RH front bracket weldments into the ends of the bumper tube, then insert the threaded rod through holes in the brackets and loosely thread a second lock nut onto the other end of the rod to hold the assembly.

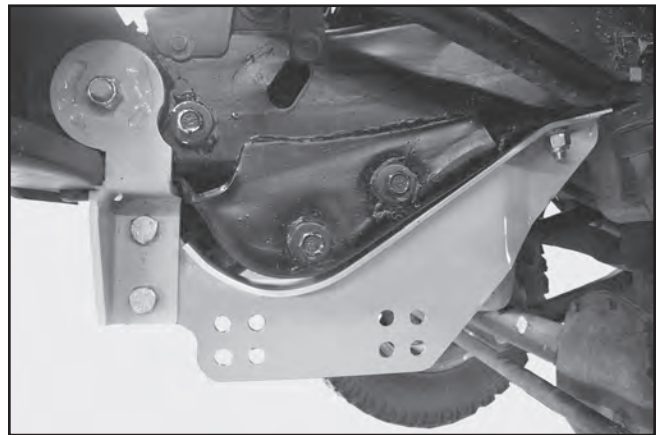


PHOTO NO. DCP0704

Bolt the front brackets to the side brackets with two 1/2 inch x 1 1/4 inch hex bolts and lock nuts per side.

4. Fasten the mount plates of the prong weldment outside of the side brackets, using four 1/2 inch x 1 1/4 inch hex bolts and nuts.

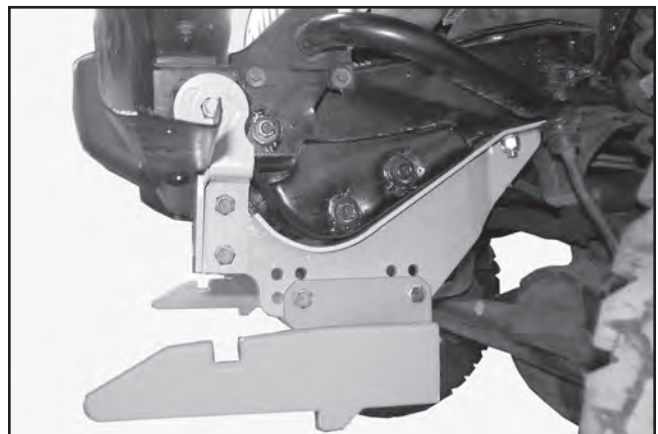


PHOTO NO. DCP0699

5. Reassemble the end cap to the vehicle bumper with the three original screws.

Fully tighten the mount kit hardware to complete installation of the kit. Bottom edges of the prongs should measure about 10 inches above the ground when complete.