

VEHICLE INSTALLATION INSTRUCTIONS
 FORD 4 X 4: 1997-'99 F250 LIGHT DUTY
 2000-2003, 2004 HERITAGE F150 (7,700 LB GVW)

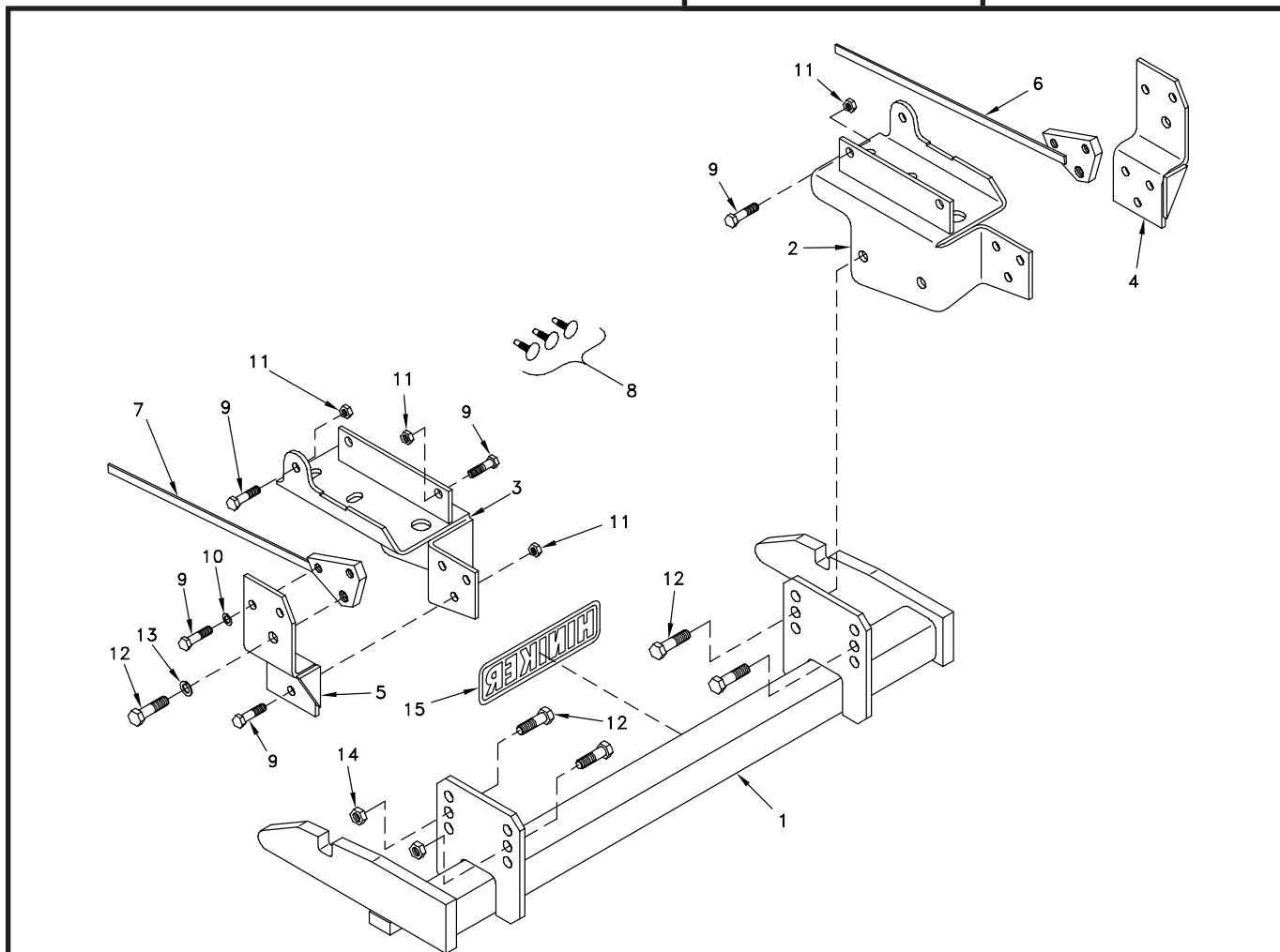
Hiniker Company
 58766 240th St.
 P.O. BOX 3407
 Mankato, MN 56002

INSTRUCTION SHEET NO: 25010498 REV C

March 14, 2012

IMPORTANT: Read the Snowplow Operator's Manual before assembling this kit.

MINIMUM VEHICLE RECOMMENDATIONS	
MFR Snowplow Prep Package HD Alternator HD Battery HD Front Suspension	REAR BALLAST - 500 lbs. when plow is attached. Secure Weight Behind Rear Wheels.



Mount Kit No. 25010490

DWG NO. 3310B

REF. NO.	PART NUMBER	DESCRIPTION	QTY.	REF. NO.	PART NUMBER	DESCRIPTION	QTY.
1	25010491	Prong Weldment	1	9	950-001-125	Hex Head Cap Screw 1/2-13 X 1 1/2	16
2	25010492	RH Front Bracket Weldment	1	10	952-001-004	Lock Washer 1/2 Inch	4
3	25010493	LH Front Bracket Weldment	1	11	951-003-009	Lock Nut 1/2-13 Nylon Insert	12
4	25010507	RH Rear Bracket Weldment	1	12	950-001-132	Hex Head Cap Screw 5/8-11 X 3/4	6
5	25010506	LH Rear Bracket Weldment	1	13	952-001-005	Lock Washer 5/8 Inch	2
6	25010494	RH Nut Weldment	1	14	060756	Lock Nut 5/8-11 Nylon Insert	4
7	25010495	LH Nut Weldment	1	15	25010008	Hiniker Decal	1
8	25010499	Trim Panel Retainer	3		25011161	Bolt Bag	1

All hardware should be tightened only enough to ensure safety during assembly. Fully tighten all hardware after entire assembly is completed.

GRADE 5 TYPE B & F LOCK NUT TORQUES VALUES

Size	Ft-lbs.	N-m
5/16"	13-18	17-25
3/8"	23-33	31-44
1/2"	58-82	79-112
5/8"	117-165	158-223

GRADE 5 BOLT TORQUE VALUES*

Size	Ft-lbs.	N-m
1/4"	8-12	11-16
3/8"	29-41	39-56
1/2"	73-103	99-140
5/8"	146-206	198-279

* applications without lock nuts

1. Remove the front bumper from the truck by first disconnecting both fog lamps, removing three trim panel retainers that hold the rubber splash shield to the back of the bumper, and untaping the cord for the engine block heater from its retainer on the bumper.

Unbolt four nuts to remove the bumper from the vehicle.

NOTE: Three trim panel retainers are provided in this kit to reattach the rubber splash shield to the bumper if the original retainers are damaged during disassembly.

2. Remove both tow hooks from the vehicle and save the hardware for reinstallation.

Hold the LH and RH front brackets tight to the bottom and side of the vehicle rail, then reattach the tow hooks with the original hardware.

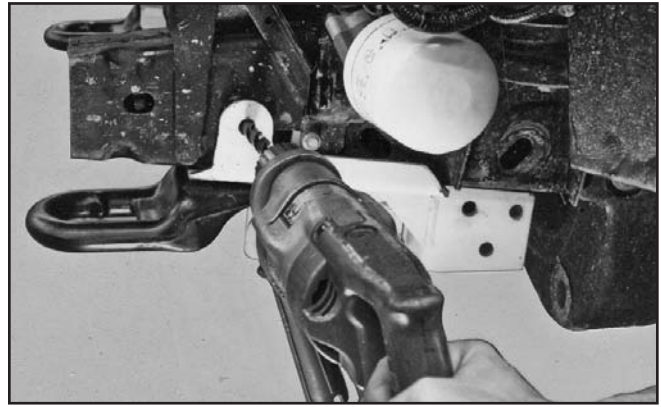


PHOTO NO. 3634

Drill a 17/32 inch diameter hole in each vehicle rail through the existing hole in each bracket. Install 1/2 inch x 1 1/2 inch hex bolts through the drilled holes and secure with lock nuts.

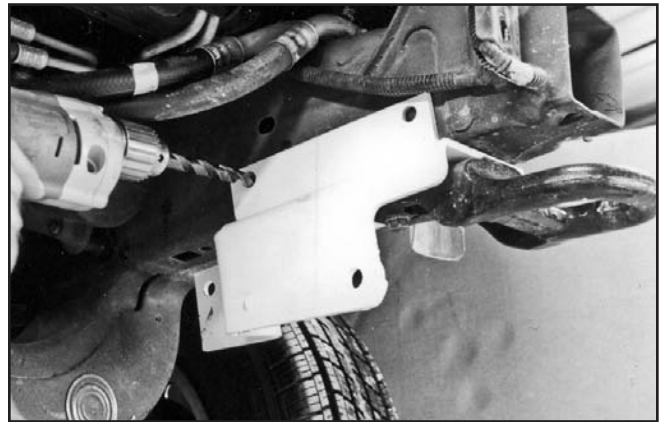


PHOTO NO. 4160

Drill two 17/32 inch diameter holes through the inner wall of each vehicle frame to match holes in each bracket. Install 1/2 inch x 1 1/2 inch hex bolts through the drilled holes and secure with lock nuts.

3. Loosely bolt the LH and RH rear brackets to the front brackets with three 1/2 inch x 1 1/2 inch hex bolts and lock nuts per side.

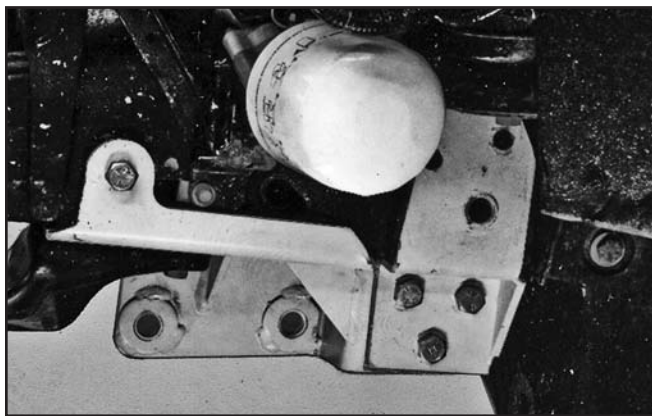


PHOTO NO. 3635

Hold the brackets tight to the bottom and side of each vehicle rail so that the 5/8 inch hole in the rear bracket matches the back of the existing slot in the vehicle.



PHOTO NO. 3636

Drill two 17/32 inch diameter holes into the vehicle through each rear bracket.

4. Insert the LH and RH nut bars into the vehicle rails to match the holes in the rear brackets.

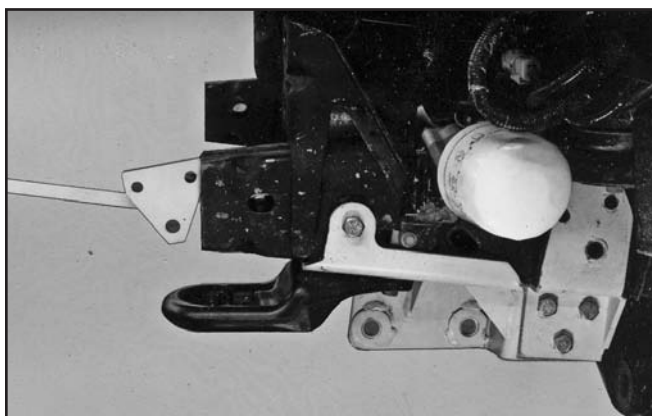


PHOTO NO. 3637

Bolt the rear brackets to the vehicle with two 1/2 inch x 1 1/2 inch hex bolts, one 5/8 inch x 1 3/4 inch hex bolt and lockwashers.

5. Reattach the front bumper to the truck with four nuts removed earlier. Connect both fog lamps and tape the cord from the engine block heater to its retainer in the bumper.

Fasten the rubber splash shield to the back of the bumper with the three original fasteners or with the trim panel retainers provided in this kit.

6. Fasten the mount plates of the prong weldment to holes in the side brackets with four 5/8 inch x 1 3/4 inch hex bolts and lock nuts.



PHOTO NO. 3639

Bottom edges of the prongs should measure about 10 inches above the ground. Ideally, the prongs should lift the plow frame slightly when driving into the plow.

7. Fully tighten all hardware to specified torques.

NOTE: Owners should be instructed to remove the prong weldment from the vehicle in the off-season in order to comply with Ford Motor Company's limit of 50 lbs. of permanently attached snowplow mounting hardware.