

# SECTION 2

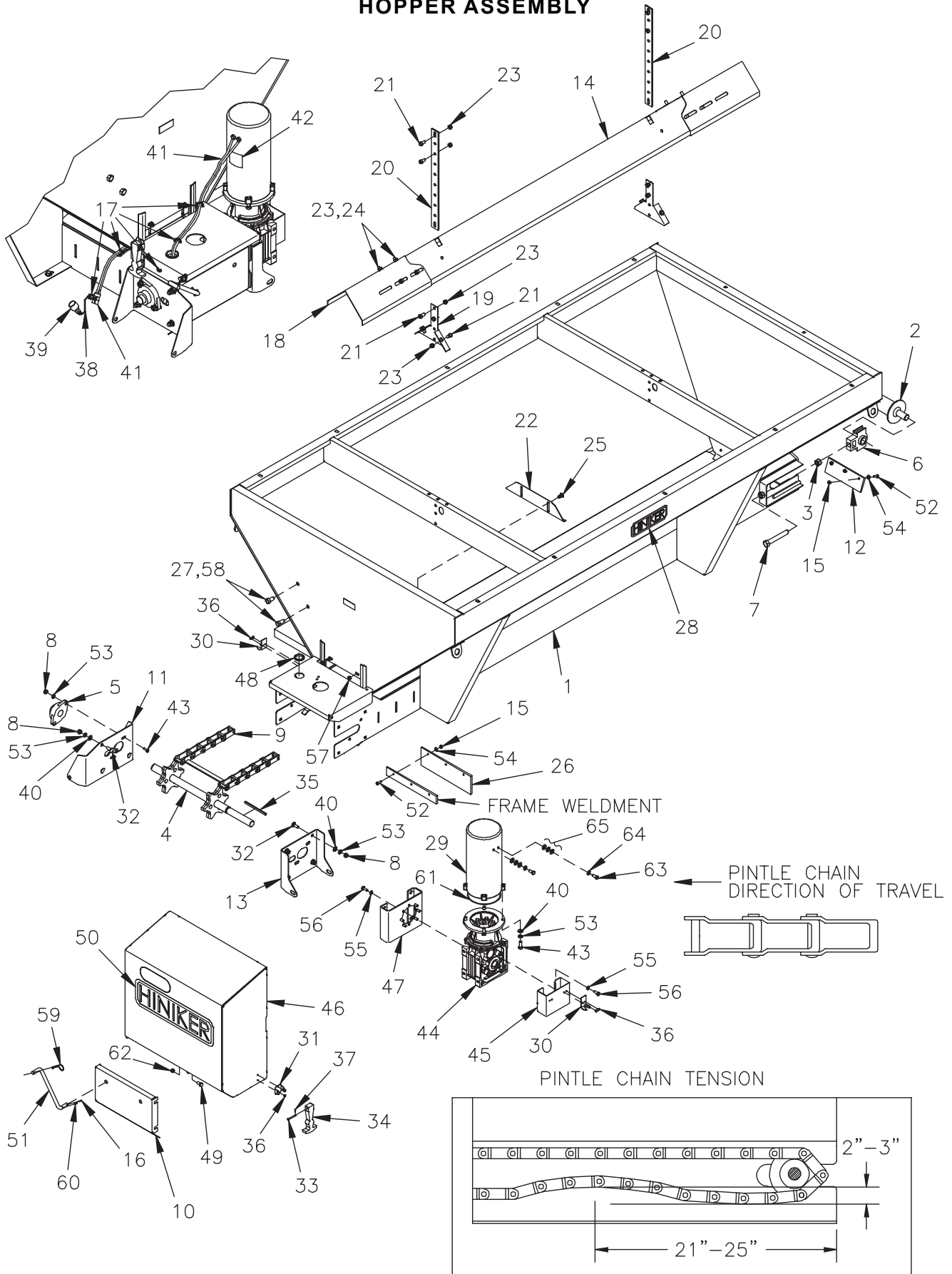
## ELECTRIC CONVEYOR SPREADER COMPONENTS (MODELS 835/635)

<b>PAGE 2</b>	<b>HOPPER ASSEMBLY</b>
<b>PAGE 4</b>	<b>DISCHARGE CHUTE ASSEMBLY</b>
<b>PAGE 6</b>	<b>ELECTRICAL ASSEMBLY</b>
<b>PAGE 8</b>	<b>GEARBOX ASSEMBLY</b>
<b>PAGE 9</b>	<b>FRONT SHAFT AND APRON CHAIN ASSEMBLY</b>
	<b>OPTIONAL EQUIPMENT</b>
<b>PAGE 10</b>	<b>HINGED HOPPER GRIDS</b>
<b>PAGE 10</b>	<b>TARP KIT</b>
<b>PAGE 11</b>	<b>VIBRATOR KIT</b>
<b>PAGE 12</b>	<b>TIE DOWN KIT</b>
<b>PAGE 12</b>	<b>BRAKE LIGHT KIT</b>

# HINKER ELECTRIC CONVEYORS SPREADER

## HOPPER ASSEMBLY

SECTION 2



DWG. NO. 6757

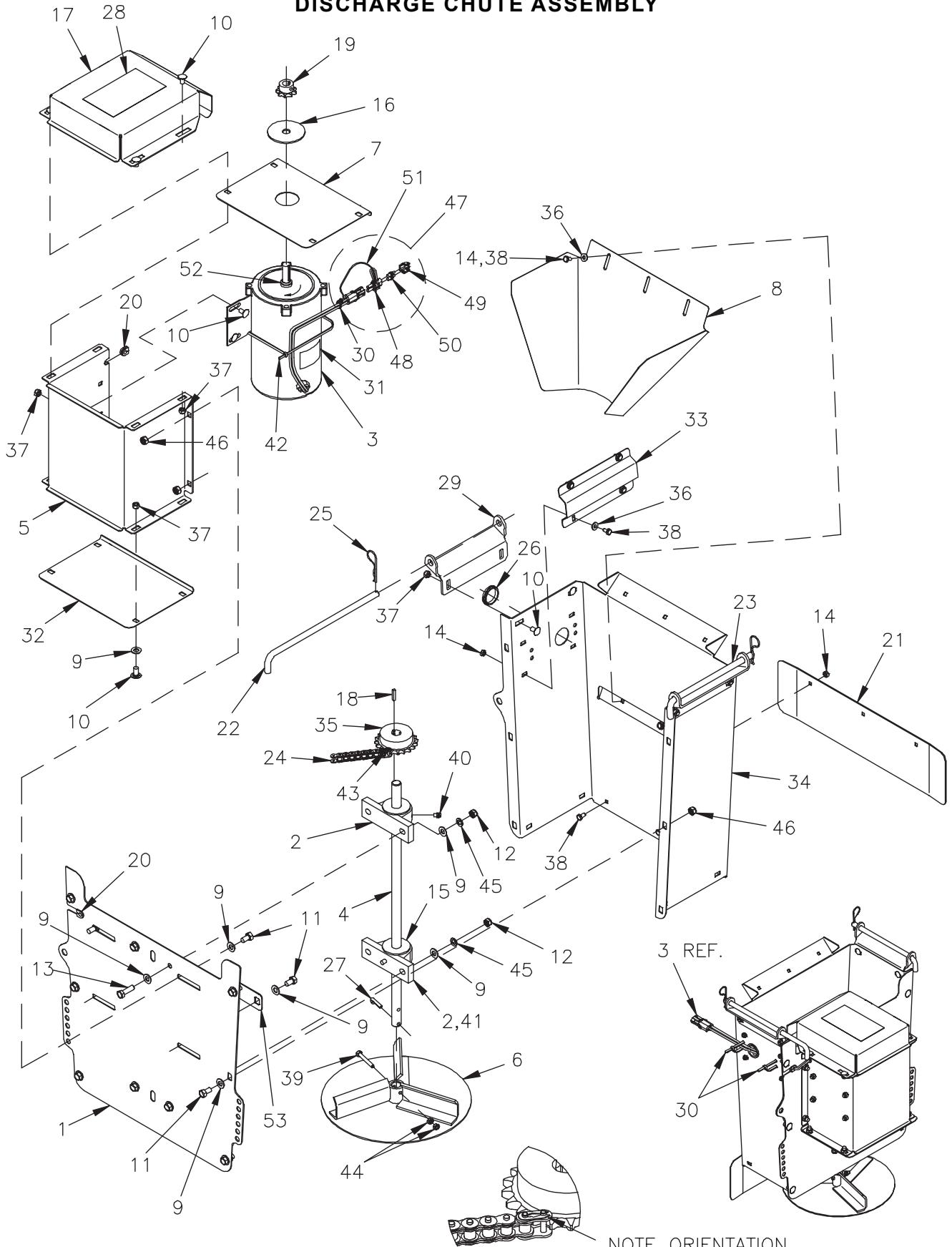
# HINIKERELECTRICCONVEYORSREADER

REF. NO.	PART NUMBER	DESCRIPTION	QTY.	REF. NO.	PART NUMBER	DESCRIPTION	QTY.
1	79203265	Electric Sander Weldment, 8 Ft	1	32	950-003-067	Carriage Bolt 3/8-16 x 1 SS	7
	79203269	Electric Sander Weldment, 6 1/2 Ft	1	33	953-002-039	Clevis Pin 3/16 x 1 3/4	2
2	79202459	Idler Weldment	1	34	720-02126	Latch, Rubber	2
3	061937	Hex Nut 5/8-11 SS	2	35	79203278	Key 1/4 x 4 11/16	1
4	79203270	Drive Shaft Weldment	1	36	109953	Rivet-Pop 3/16 x 1/4 Stainless OEDH	8
5	79202405	2-Bolt Flange Bearing 206-18	1	37	720-02128	Cotter Pin 1/16 x 1/2 ZP	2
6	79202406	Take Up Bearing 205-16	2	38	36716025	Nylon Lanyard 8"	1
7	950-001-346	Hex Head Cap Screw 5/8-11 x 6 Full Thread SS	2	39	36716002	Dust Cap	1
8	061910	Hex Nut 3/8-16 SS	A/R	40	061916	3/8 Flat Washer SAE SS	A/R
9	79202398	8 Ft Apron Chain Assembly (See Sec. 2 P. 9)	1	41	38812038	Drive Motor Stub Cable	1
	79202399	6 1/2 Ft Apron Chain Assembly (See Sec. 2 P. 9)	1	42	79203279	Decal, Do Not Power Wash	1
10	79203272	Stiffener	1	43	950-001-344	Hex Head Cap Screw 3/8-16 x 1 1/4 SS	6
11	79203273	Spinner Clevis, LH	1	44	79203280	Gearbox, Electric Spreader	1
12	79202458	Front Wiper	1	45	79203281	Cover Support	1
13	79203274	Spinner Clevis, RH	1	46	79203282	Cover Weldment SS, Electric	1
14	79202566	Inverted V 8 Ft SS	1	47	79203283	Gearbox Mount, Electric Spreader	1
	79202567	Inverted V 6 1/2 Ft SS	1	48	79203284	Snap Bushing 1 1/2 x 1 5/16	1
15	061605	Nut 1/4-20 SS Nylon Lock Waxed	6	49	950-006-002	Hex Head Shoulder Bolt 5/16-18 x 5/8, 1/2 x 5/32	2
16	953-003-029	Spring Pin 5/32 x 1 1/4	1	50	79204093	Decal Hiniker	1
17	367-001-014	Plastic Cable Tie 3/16 x 8 Black	5	51	79203285	Spinner Rod	1
18	79203275	Inverted V Extension	2	52	950-001-334	Hex Head Cap Screw 1/4-20 x 3/4 SS	6
19	79202744	Inverted V Gusset SS	2	53	033-29011	3/8 Split Lock Washer SS	A/R
20	79202565	Strap	2	54	952-004-062	Washer-Flat 1/4 SS 5/8 OD x 9/32 ID	6
21	031-09103	Hex Head Cap Screw 3/8-16 x 3/4 SS	A/R	55	061917	Lock Washer 5/16 SS	10
22	79203276	Deflector	1	56	950-001-351	Hex Head Cap Screw M8-1.25 x 20 SS	10
23	951-002-013	Flanged Whiz Lock Nut 3/8-16 SS	A/R	57	951-002-011	Whiz Lock Nut 5/16-18 SS	2
24	950-003-082	Carriage Bolt 3/8-16 x 3/4 SS	8	58	950-001-288	Hex Head Cap Screw 1/2-13 x 1 SS	2
25	950-003-080	Carriage Bolt 5/16-18 x 3/4 SS	2	59	953-005-001	Pin-Hair Cotter 1/8 x 2 3/8	1
26	79201694	Chain Wiper	1	60	060854	Pin 1/8 x 3/4 Cotter	1
27	061923	Hex Nut 1/2-13 SS	2	61	79203772	O-Ring BUNA-N-046	1
28	79204094	Decal Hiniker	2	62	951-003-001	Nut-Nylon Insert 5/16-18	2
29	79203277	Drive Motor, Electric Spreader	1	63	950-001-341	Hex Head Cap Screw 5/16-18 x 1/2 SS	2
30	720-02123	Clevis Bracket	2	64	061917	Lock Washer 5/16 Inch SS	2
31	720-02125	Base Bracket Hood Latch	2	65	952-003-012	Flat Washer 5/16 Inch SAE SS	6

2 CEMS

DISCHARGE CHUTE ASSEMBLY

SEC 2



NOTE ORIENTATION OF CHAIN CONNECTOR

DWG. NO. 6758

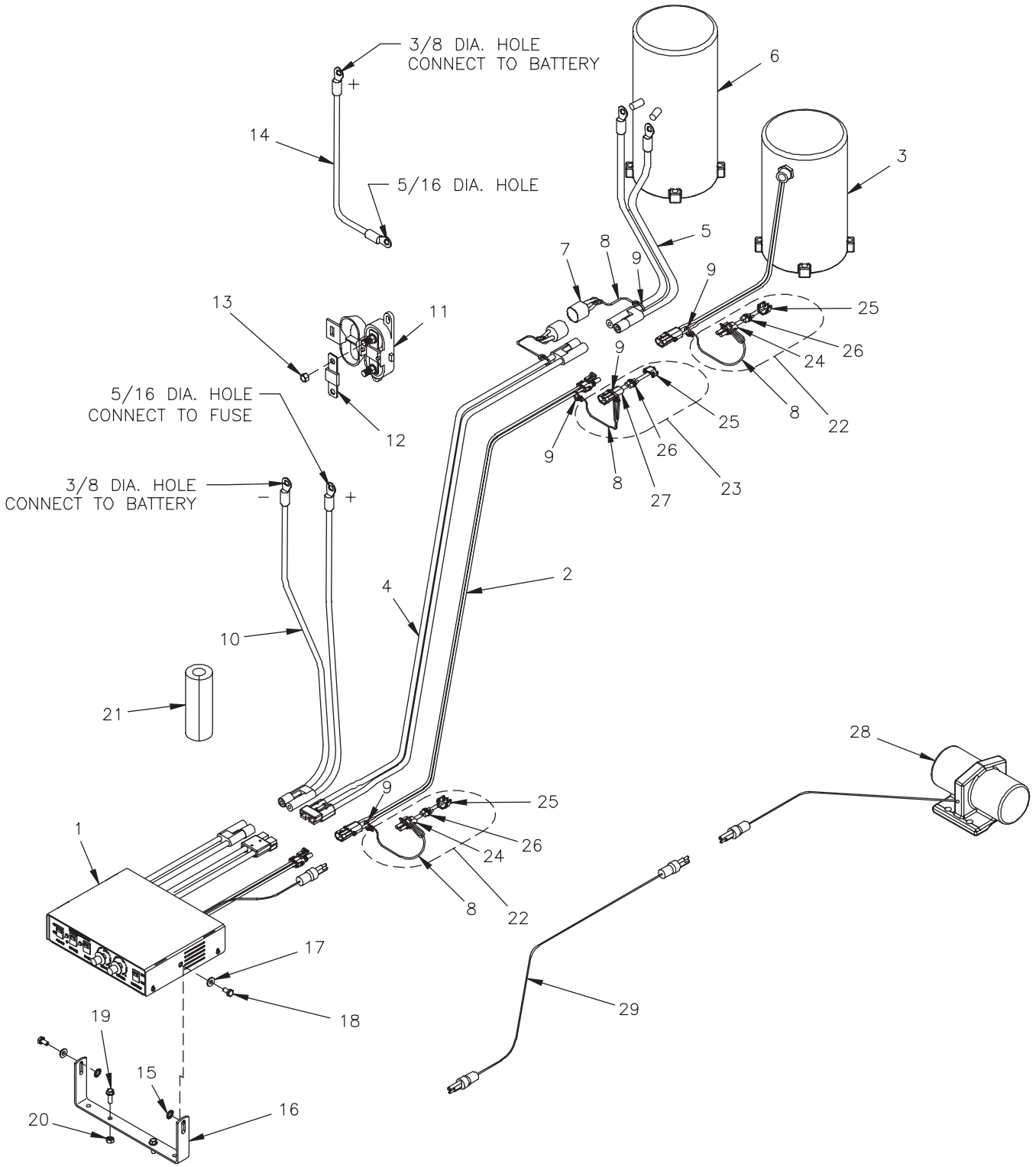
# HINIKERELECTRICCONVEYORSREADER

REF. NO.	PART NUMBER	DESCRIPTION	QTY.	REF. NO.	PART NUMBER	DESCRIPTION	QTY.
1	79203311	Rear Panel, Long Spinner	1	28	71504138	Decal Warning, Rotating Parts	1
	79203294	Rear Panel, Short Spinner	1	29	79203306	Spinner Pivot	2
2	79203295	2-Bolt Pillow Block Bearing 3/4 Bore	A/R	30	367-001-014	Plastic Cable Tie 3/16 x 8 Black	A/R
3	79203318	Electric Motor, 12V, 1/3 Hp, 56C	1	31	79203279	Do Not Power Wash Decal	1
4	79203312	Spinner Shaft, Long	1	32	79203307	Bottom Motor Cover	1
	79203296	Spinner Shaft, Short	1	33	79203308	Wire Cover	1
5	79203297	Spinner Motor Cover	1	34	79203314	Spinner Body, Long	1
6	79202507	Spinner Weld SS	1		79203309	Spinner Body, Short	1
7	79203298	Motor Top	1	35	79203310	Sprocket 40B20, 3/4 Bore	1
8	79203313	Inner Deflector, Long	1	36	952-004-062	Washer-Flat 1/4 SS 5/8 OD x 9/32 ID	7
	79203299	Inner Deflector, Short	1	37	951-002-011	Lock Nut 5/16-18 Whiz Lock SS	16
9	061916	3/8 Flat Washer SAE SS	A/R	38	950-001-319	Hex Head Cap Screw 1/4-20 x 1/2 316 SS	10
10	950-003-077	Carriage Bolt 5/16-18 x 5/8 SS	16	39	031-06010	Hex Head Cap Screw 1/4-20 x 2 Gr 5	1
11	031-09103	Hex Head Cap Screw 3/8-16 x 3/4 SS	A/R	40	203-50000	Zerk 1/4 28 NPT 45°	A/R
12	061910	Hex Nut 3/8-16 SS	A/R	41	79202742	Pillow Block Bearing 204-12Gb (Long Chute Only)	1
13	950-001-344	Hex Head Cap Screw 3/8-16 x 1 1/4 SS	4	42	921-001-145	Plastic Cable Tie .083 x 24	1
14	061605	Nut 1/4-20 SS Nylon Lock Waxed	10	43	81005983	#40 Connecting Link SS	1
15	79202483	Bearing Shield	2	44	060954	Lock Nut 1/4-20	2
16	79203300	Motor Shield	1	45	033-29011	3/8 Inch Lock Washer SS	A/R
17	79203301	Spinner Drive Guard	1	46	951-002-013	Lock Nut 3/8-16 SS	A/R
18	702-53002	Key 3/16 x 1	1	47	79204302	Male Dust Cover Assembly	1
19	79203302	Sprocket 40B9, 5/8 Bore	1	48	38472327	Connector Metri-Pack 480	1
20	79203303	Grommet, Spinner	2	49	38400028	Secondary Lock Metri-Pack 480	1
21	79203304	Front Deflector	1	50	38400034	Seal Plug 480	2
22	79202518	Chute Pin Long	1	51	36716025	Nylon Lanyard 8"	1
23	79202517	Chute Pin	1	52	79204253	Shaft Seal 5/8	1
24	81006090	Chain #40RC Spinner 33P SS	1	53	79204317	Guard	1
25	953-005-005	Pin-Hair Cotter 3/32 x 1 7/8	2		79203292	Short Spinner Assembly Complete	
26	79203284	Snap Bushing 1 1/2 x 1 5/16	1		79203293	Long Spinner Assembly Complete	
27	035-42063	Cotter Pin 1/4 x 1 1/4	1				

S  
C  
E  
M  
S  
2

ELECTRICAL ASSEMBLY

SEC 2



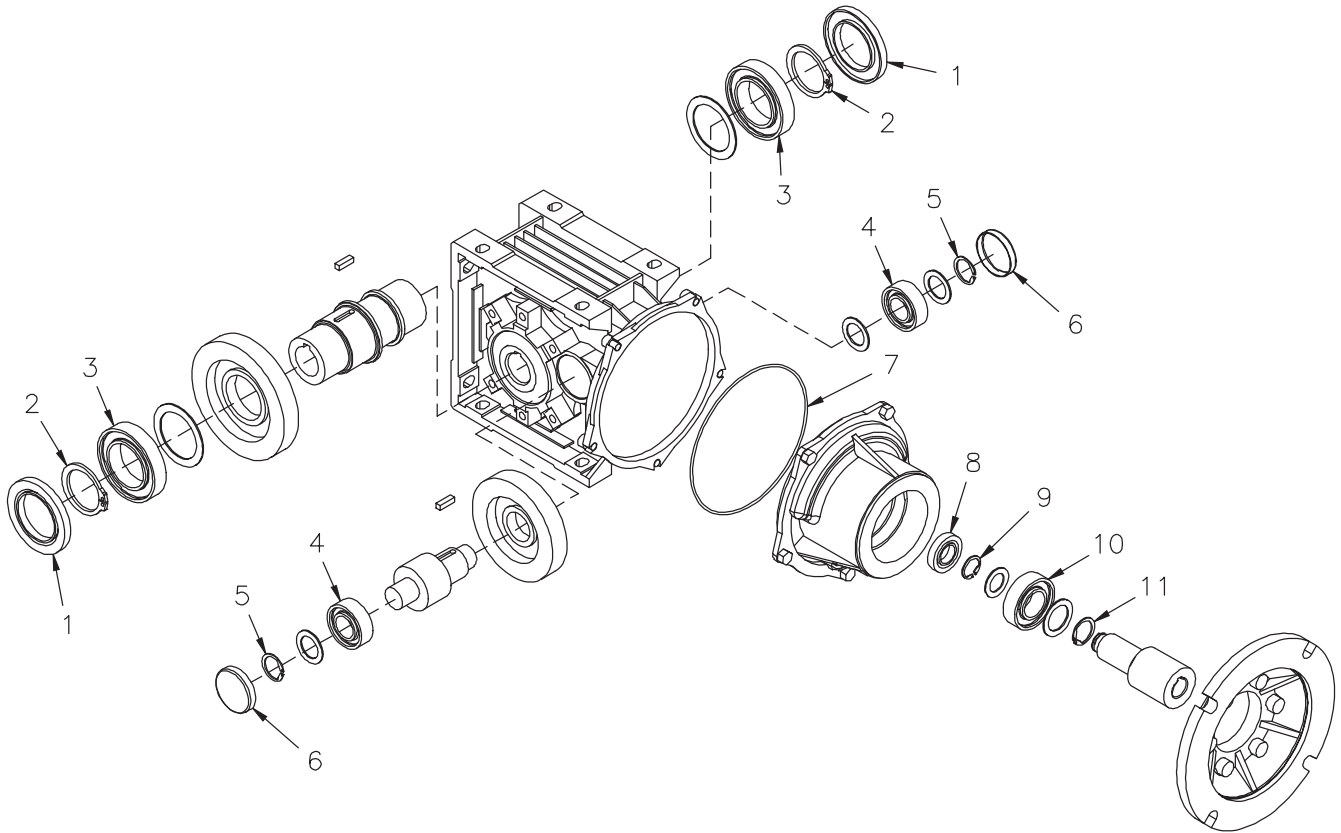
## HINIKERELECTRICCONVEYORSREADER

REF. NO.	PART NUMBER	DESCRIPTION	QTY.	REF. NO.	PART NUMBER	DESCRIPTION	QTY.
1	36012000	Electric Spreader Controller	1	16	79203334	Controller Mount Bracket	1
2	38812031	25 Ft Power Cable Spinner Motor	1	17	952-004-062	Flat Washer 1/4 Inch SS	2
	38812042	10 Ft Power Cable Spinner Motor	A/R	18	950-001-319	Hex Head Cap Screw 1/4-20 x 1/2 SS	2
3	79203318	Electric Motor Assembly, Spinner	1	19	950-002-003	Whiz Lock Bolt 1/4-20 x 3/4	2
4	38812030	Power Cable Drive Motor 25 Ft	1	20	951-002-001	Whiz Lock Nut 1/4-20	2
5	38812038	Drive Motor Stub Cable	1	21	39107001	Foam Grommet 4" Long	1
6	79203277	Drive Motor Electric Spreader	1	22	79204302	Male Dust Cover Assembly	2
7	36716002	Dust Cap	A/R	23	79204303	Female Dust Cover Assembly	1
8	36716025	Nylon Lanyard 8"	A/R	24	38472327	Connector Metri-Pack 480	2
9	367-001-014	Cable Tie, Black 3/16 x 8	A/R	25	38400028	Secondary Lock 480	3
10	38812029	Cable Battery Power 12 Ft	1	26	38400034	Seal Plug 480	6
11	39207038	Fuse Holder	1	27	38400029	Connector Metri-Pack 480	1
12	39207037	Fuse 100 Amp	1	28	79203322	Vibrator 12V	1
13	951-002-011	Whiz Lock Nut 5/16-18 SS	2	29	38812032	Vibrator Motor Power Cable, 25 Ft.	1
14	38813012	Cable, Solenoid	1		38812041	Vibrator Motor Power Cable, 10 Ft.	A/R
15	952-004-008	External Lock Washer 1/4	2				

**2** CEMS

GEARBOX ASSEMBLY

SEC 2

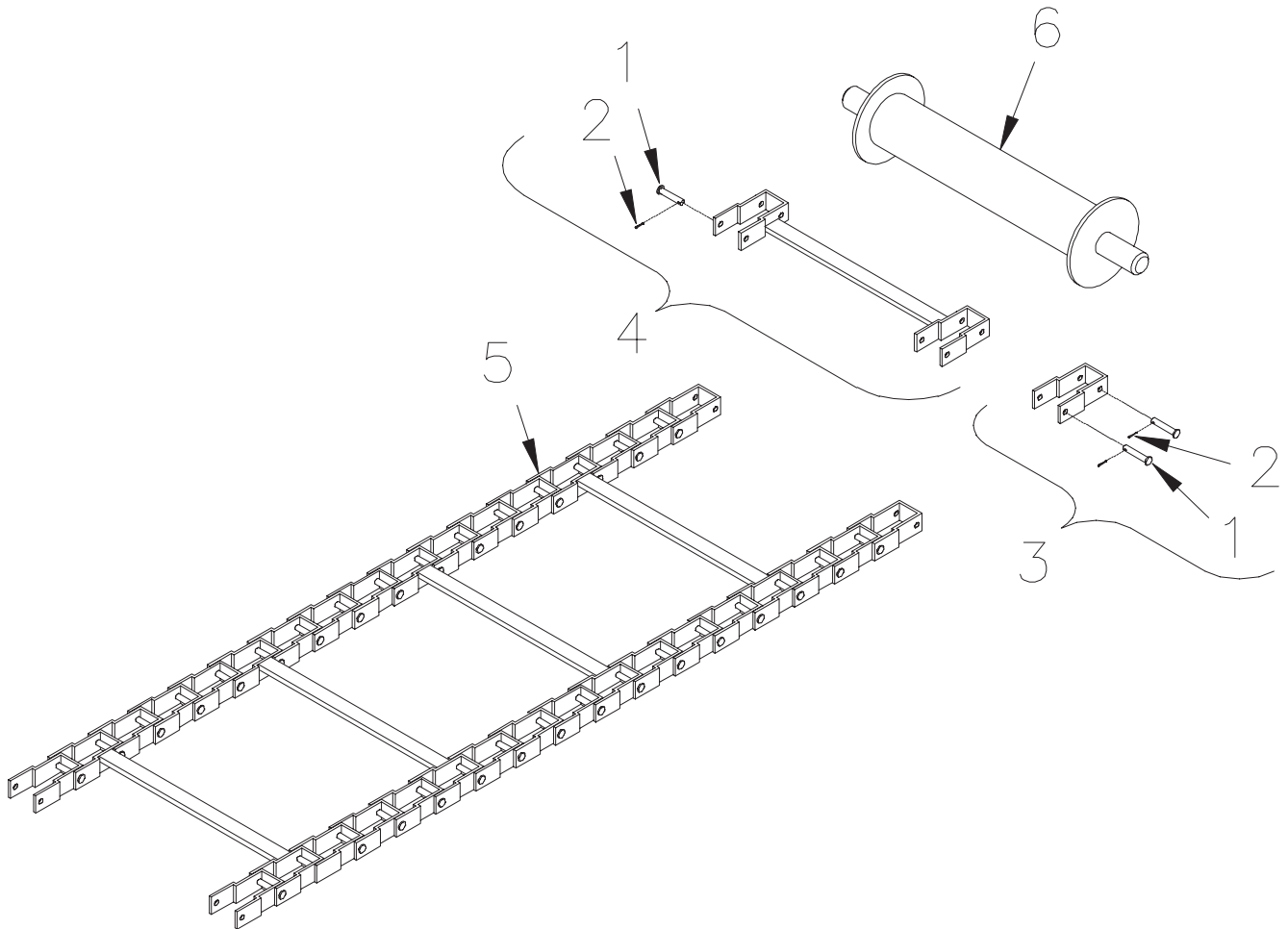


DWG. NO. 7641

REF. NO.	PART NUMBER	DESCRIPTION	QTY.	REF. NO.	PART NUMBER	DESCRIPTION	QTY.
1	79204101	Oil Seal	2	7	79204107	Gasket O-Ring	1
2	79204102	Retaining Ring	2	8	79204108	Oil Seal	1
3	79204103	Ball Bearing	2	9	79204109	Retaining Ring	1
4	79204104	Ball Bearing	2	10	79204110	Ball Bearing	1
5	79204105	Retaining Ring	2	11	79204111	Retaining Ring	1
6	79204106	Seal Plug	2				



FRONT SHAFT & APRON CHAIN



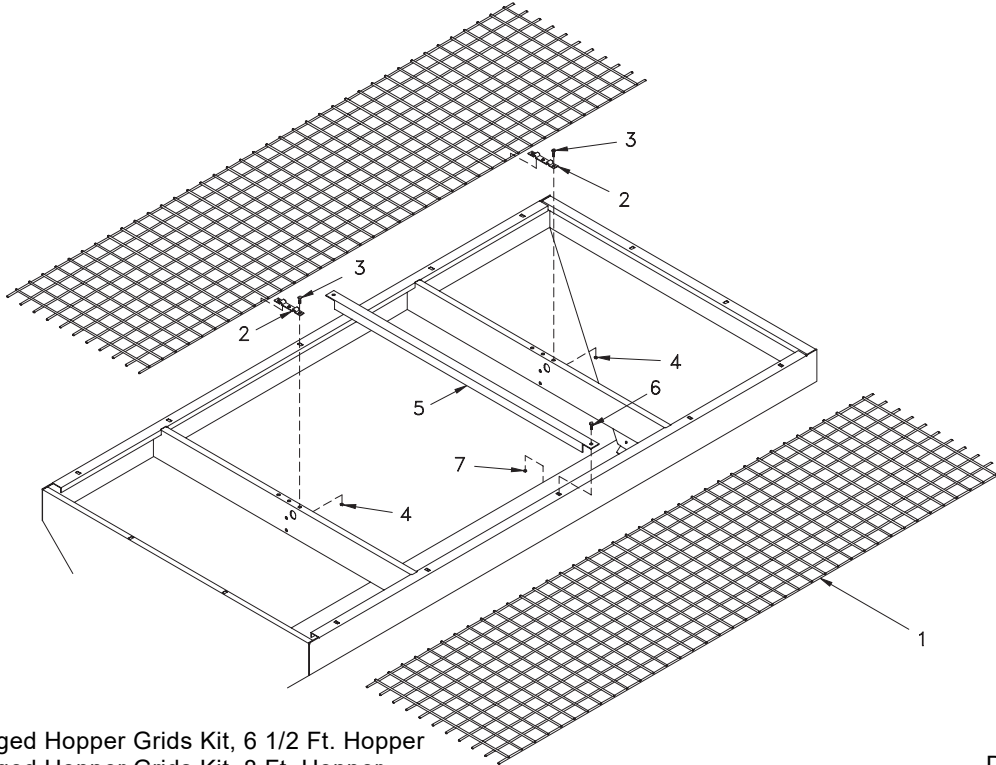
DWG. NO. 6037

REF. NO.	PART NUMBER	DESCRIPTION	QTY.	REF. NO.	PART NUMBER	DESCRIPTION	QTY.
1	000-28670	Coupler Link Pin	A/R	5	79202398	Apron Chain Assembly 8' Hopper	1
2	953-001-016	Cotter Pin, 1/8 x 1/2 Long	A/R		79202399	Apron Chain Assembly 6 1/2' Hopper	1
3	000-28666	Chain Link With Pins (Repair Only)	A/R	6	79202459	Idler Shaft Weldment	1
4	79202570	Slat With Welded Links And Pins (Repair Only)	A/R				

**HINIKERELECTRICCONVEYORSREADER**

**HINGED HOPPER GRIDS OPTION**

**SEC 2**

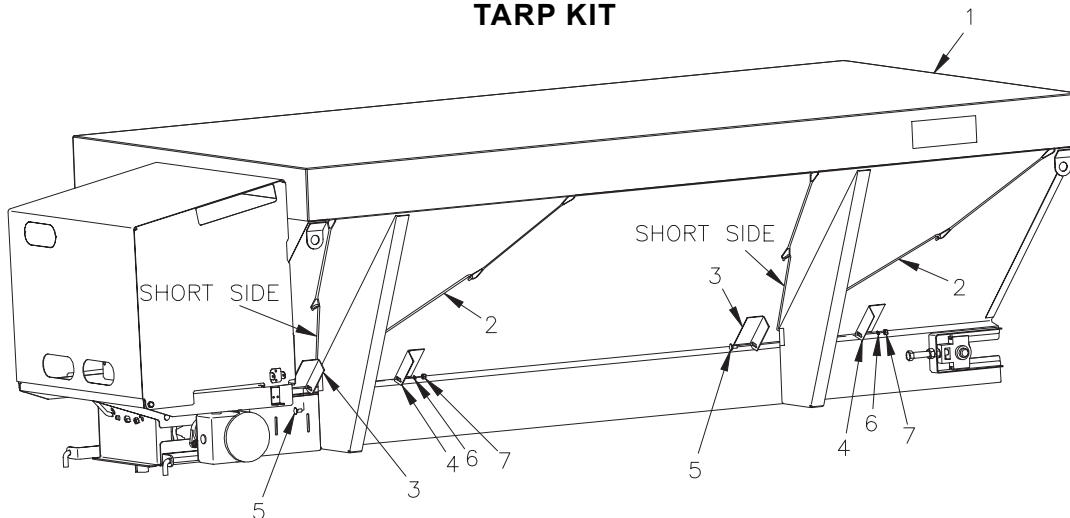


79202391 Hinged Hopper Grids Kit, 6 1/2 Ft. Hopper  
79202392 Hinged Hopper Grids Kit, 8 Ft. Hopper

DWG. NO. 6015

REF. NO.	PART NUMBER	DESCRIPTION	QTY.	REF. NO.	PART NUMBER	DESCRIPTION	QTY.
1	79202561	Screen, 8 Ft. Hopper	2	4	951-002-011	Flanged Whiz Lock Nut 5/16-18 SS	6
	79202562	Screen, 6 1/2 Ft. Hopper	2	5	79203146	Middle Grid Support	1
2	79202009	Screen Holddown	2	6	031-09103	Hex Head Cap Screw 3/8-16 x 3/4 SS	2
3	950-001-330	Hex Head Cap Screw 5/16-18 x 3/4 SS	6	7	951-002-013	Whiz Lock Nut 3/8-16 SS	2

**TARP KIT**

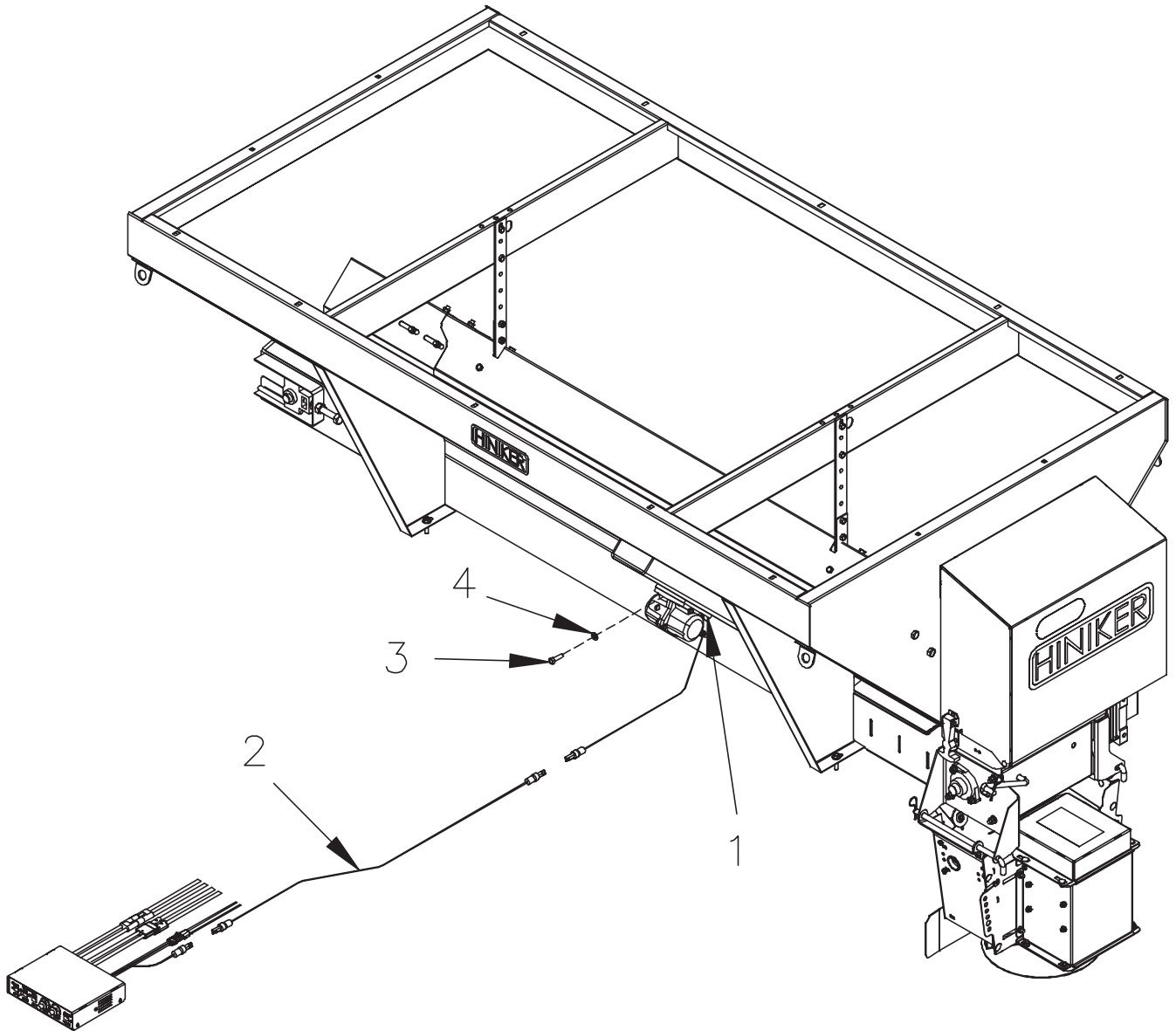


79203036 6 1/2 Ft. Spreader Tarp Assembly  
79203037 8 Ft. Spreader Tarp Assembly

DWG. NO. 6460

REF. NO.	PART NUMBER	DESCRIPTION	QTY.	REF. NO.	PART NUMBER	DESCRIPTION	QTY.
1	79203033	Tarp Shurco 8' Spreader	1	4	79203030	RH Tarp Bracket	4
	79203032	Tarp Shurco 6 1/2' Spreader	1	5	950-003-080	Carriage Bolt 5/16-18 x 3/4 SS	4
2	79203031	Tarp Hook	4	6	952-003-012	SAE Flat Washer 5/16 Inch SS	4
3	79203029	LH Tarp Bracket	4	7	951-002-011	Whiz Lock Nut 5/16-18 SS	4

VIBRATOR KIT 12V



79203317 Vibrator 12V Kit

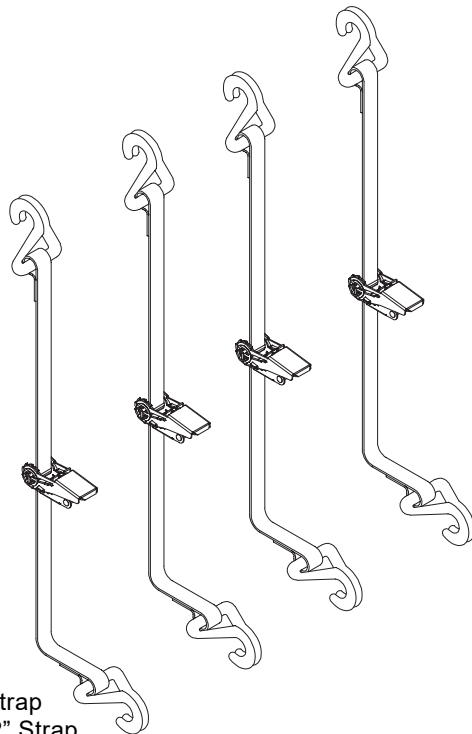
DWG. NO. 6760

REF. NO.	PART NUMBER	DESCRIPTION	QTY.	REF. NO.	PART NUMBER	DESCRIPTION	QTY.
1	79203322	Vibrator 12V Z200	1	3	950-001-344	Hex Head Cap Screw 3/8-16 x 1 1/4 SS	4
2	38812032	Vibrator Motor Power Cable 25 Ft.	1	4	033-29011	Lock Washer 3/8 Inch SS	4
	38812041	Vibrator Motor Power Cable 10 Ft.	A/R				

**HINIKERELECTRICCONVEYORSREADER**

**SEC 2**

**TIE DOWN KIT**

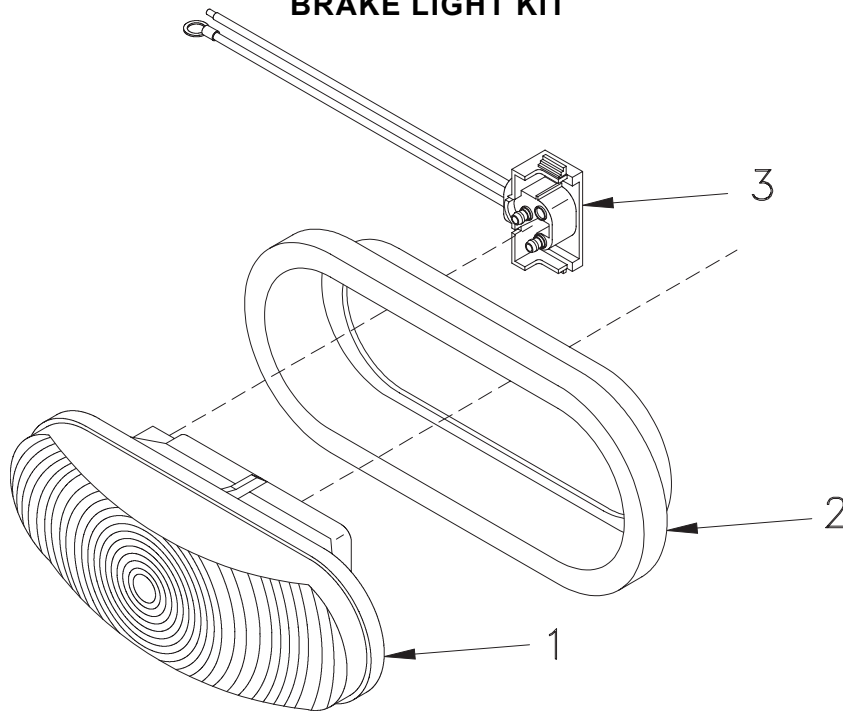


79202393 Truck Hold Down Kit, 1 1/2" Strap  
79204260 Heavy Truck Hold Down Kit, 2" Strap

DWG. NO. 6039

REF. NO.	PART NUMBER	DESCRIPTION	QTY.	REF. NO.	PART NUMBER	DESCRIPTION	QTY.
1	79202400	Ratchet Tiedown 1 1/2" Strap, 11 Ft.	4		79204301	Heavy Ratchet Tiedown 2" Strap, 13 Ft.	4

**BRAKE LIGHT KIT**



79202581 Brake Light Kit

DWG. NO. 3674

REF. NO.	PART NUMBER	DESCRIPTION	QTY.	REF. NO.	PART NUMBER	DESCRIPTION	QTY.
1	79202091	Lamp	1	3	79202093	Plug	1
2	79202092	Grommet	1		79202089	Brake Light Assembly	