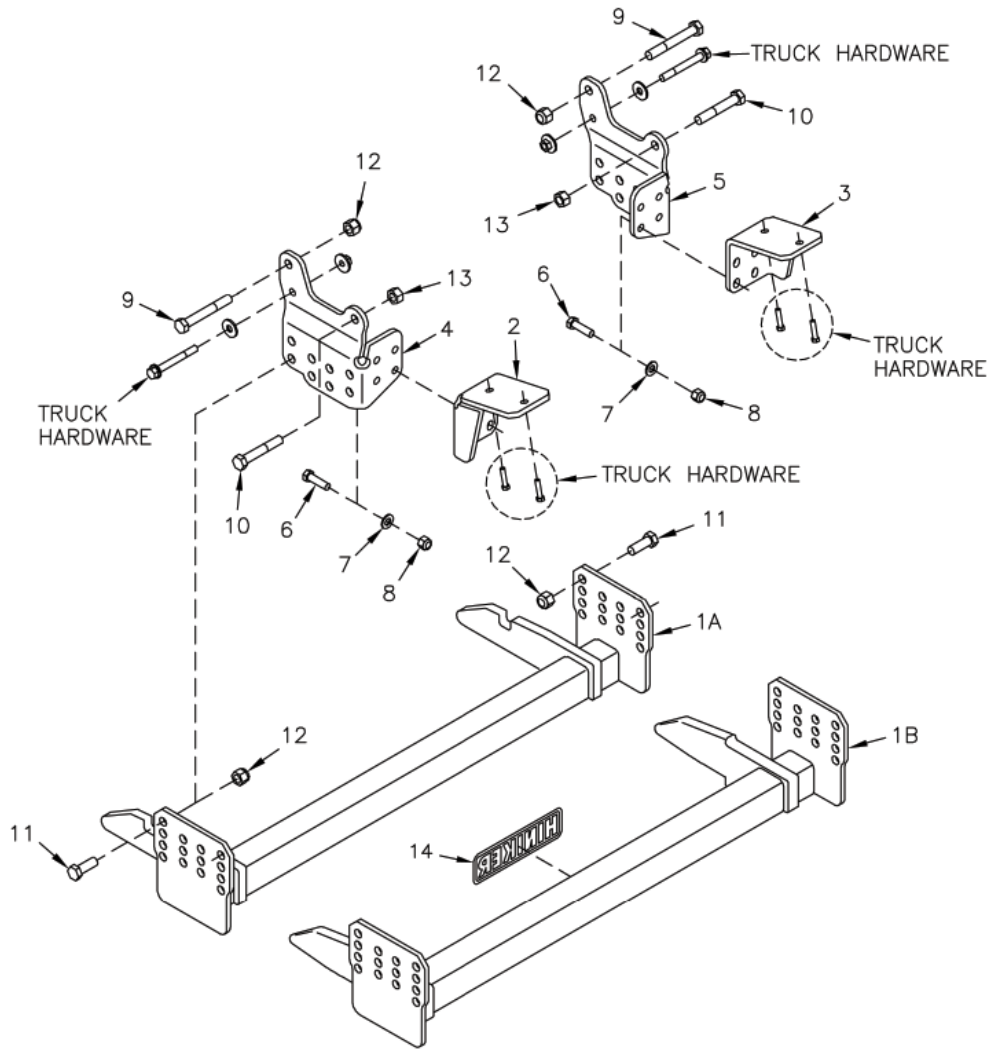




IMPORTANT: Read the Snowplow Operator's Manual before assembling this kit.

| | |
|---------------------------------|--|
| MINIMUM VEHICLE RECOMMENDATIONS | REAR BALLAST - As required to meet front GAWR. |
| - AHD Snowplow Prep Package | |



Mount Kit 25014137
 QH2 Mount Kit 25014136

DWG. NO. 7780

| REF. NO. | PART NUMBER | DESCRIPTION | QTY. | REF. NO. | PART NUMBER | DESCRIPTION | QTY. |
|----------|-------------|---|------|----------|-------------|---|------|
| 1A | 25010150 | Prong Weldment | 1 | 8 | 951-003-009 | Lock Nut 1/2-13 Nylon Insert | 8 |
| 1B | 25012946 | Prong Weldment - QH2 | 1 | 9 | 061961 | Hex Head Cap Screw 5/8-11 x 4 1/2 Gr. 8 | 2 |
| 2 | 25014138 | LH Rear Bracket | 1 | 10 | 950-001-191 | Hex Head Cap Screw 5/8-11 x 3 3/4 Gr. 5 | 2 |
| 3 | 25014139 | RH Rear Bracket | 1 | 11 | 950-001-132 | Hex Head Cap Screw 5/8-11 x 1 3/4 Gr. 5 | 8 |
| 4 | 25014140 | LH Front Bracket | 1 | 12 | 060756 | Lock Nut 5/8-11, Nylon Insert | 10 |
| 5 | 25014141 | RH Front Bracket | 1 | 13 | 951-005-044 | Lock Nut 5/8-11 2-Way | 2 |
| 6 | 950-001-120 | Hex Head Cap Screw 1/2-13 x 1 3/4 Gr. 5 | 8 | 14 | 25010008 | Hiniker Decal | 1 |
| 7 | 952-003-004 | SAE Flat Washer 1/2 Inch | 8 | | 25014144 | Bolt Bag | 1 |

All hardware should be tightened only enough to ensure safety during assembly. Fully tighten all hardware after entire assembly is completed.

GRADE 5 TYPE B & F LOCK NUT TORQUE VALUES

| Size | Ft-lbs. | N-m |
|-------|---------|---------|
| 5/16" | 13-18 | 17-25 |
| 3/8" | 23-33 | 31-44 |
| 1/2" | 58-82 | 79-112 |
| 5/8" | 117-165 | 158-223 |

GRADE 5 BOLT TORQUE VALUES*

| Size | Ft-lbs. | N-m |
|------|---------|---------|
| 1/4" | 8-12 | 11-16 |
| 3/8" | 29-41 | 39-56 |
| 1/2" | 73-103 | 99-140 |
| 5/8" | 146-206 | 198-279 |

* Applications without lock nuts

1. Remove the lower plastic portion of the front truck bumper for clearance while assembling mount kit components onto the vehicle. Material will need to be trimmed away from the areas around the plow's attachment prongs before reinstalling plastic to bumper later.

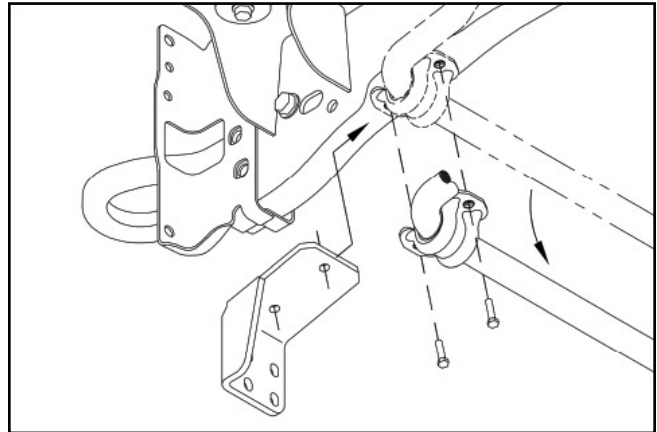
Remove the front tow hook bolt from both sides of the vehicle. These bolts will be replaced by longer 5/8 inch bolts and lock nuts supplied with the mount kit.

Remove the lower bumper bracket bolt from both sides of the vehicle and save for reinstallation.

2. Identify the LH and RH rear brackets from the mount kit.

Important: Take great care not to crossthread or strip threads in the vehicle frame!

On one side of the vehicle at a time, remove the two bolts that fasten the torsion bar bushing to the bottom of the vehicle frame.

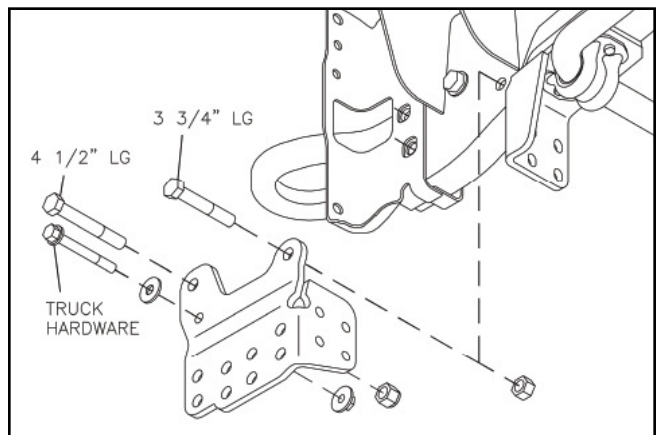


DWG NO. 7781

Slide the rear brackets between the torsion bar bushings and the frame rails, then loosely reinstall original bolts to secure bushings and brackets to the vehicle.

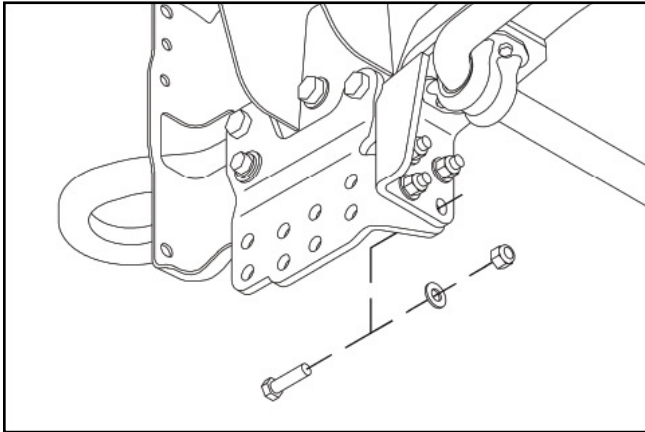
3. Bolt the LH and RH front brackets to the outside of the truck frame with 5/8 inch x 4 1/2 inch hex bolts through the upper front holes and original bumper bracket bolts removed earlier through lower front holes. Loosely secure bolts with lock nuts.

Insert a 5/8 inch x 3 3/4 inch hex bolt through the rear hole in the side of each bracket and secure with a 2-way lock nut.



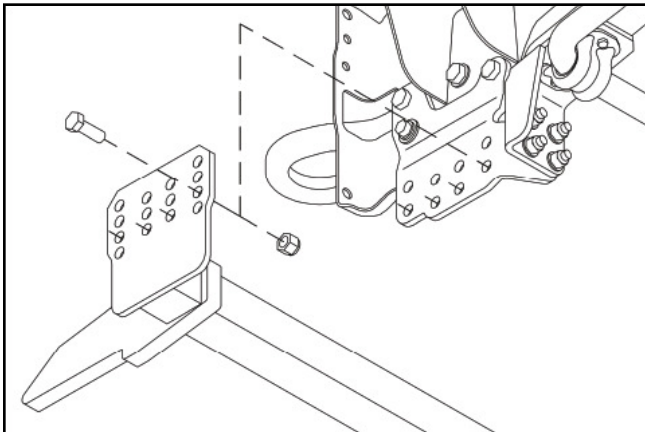
DWG NO. 7782

Install four 1/2 inch x 1 3/4 inch hex bolts per side between the front and rear brackets. Loosely secure with 1/2 inch SAE flat washers and lock nuts.



DWG NO. 7783

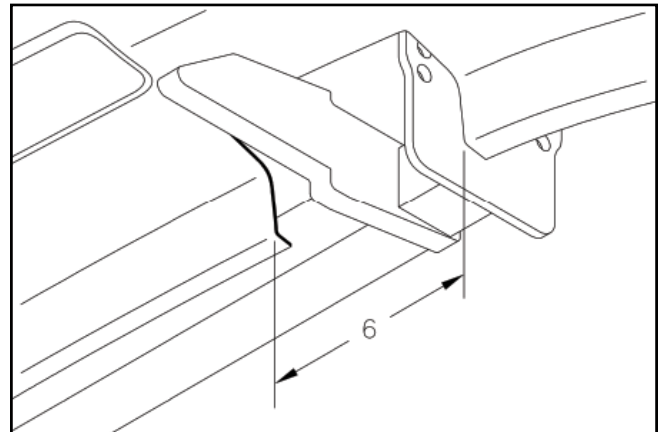
4. Fasten the mount plates of the prong weldment to holes in the LH and RH brackets with 5/8 inch x 1 3/4 hex bolts and lock nuts.



DWG NO. 7784

Bottom edges of the prongs should measure about 10 inches above the ground. Ideally, the prongs should lift the plow frame slightly when driving into the plow.

5. Fully tighten all hardware to specified torque values.
6. Notch the front bumper plastic about 6 inches wide centered on the prongs to provide clearance for the receivers on the plow frame when attaching the plow to the truck. Remove only the least amount of material required for clearance the preserve the appearance of the truck.



DWG NO. 7727

Reinstall plastic to bottom of bumper using original fasteners.