

VEHICLE INSTALLATION INSTRUCTIONS:
CHEV/GMC 4x4: 2020 & NEWER 2500/3500
SILVERADO/SIERRA

Hiniker Company
58766 240th St.
Mankato, MN 56001

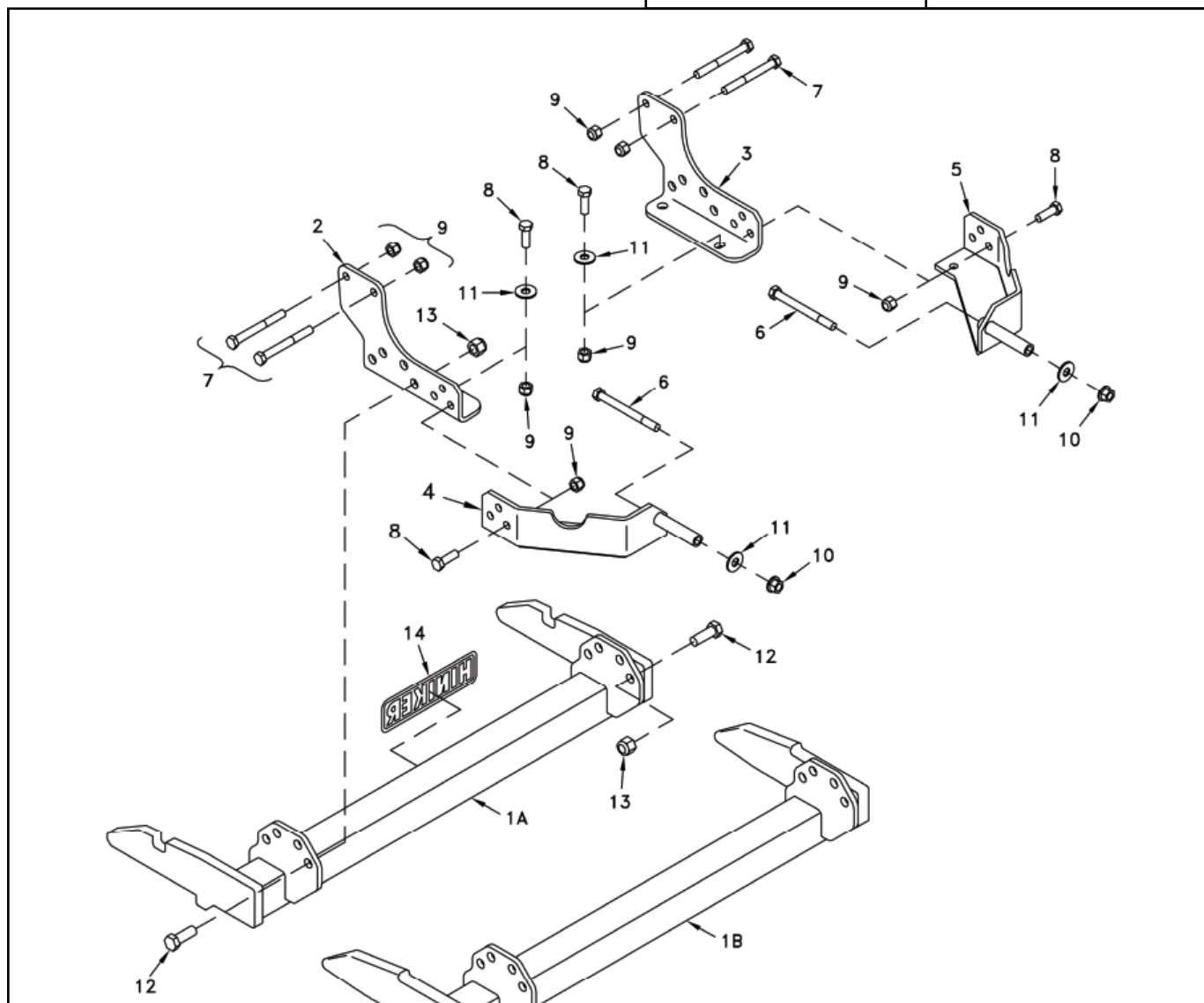
INSTRUCTION SHEET NO: 25014101

October 16, 2019



IMPORTANT: Read the Snowplow Operator's Manual before assembling this kit.

| | |
|---------------------------------|---|
| MINIMUM VEHICLE RECOMMENDATIONS | REAR BALLAST - 500 lbs. when plow is attached. Secure Weight Behind Rear Wheels. |
| MFR Snowplow Prep Package | |



Mount Kit 25014093
QH2 Mount Kit 25014094

DWG. NO. 7765

| REF. NO. | PART NUMBER | DESCRIPTION | QTY. | REF. NO. | PART NUMBER | DESCRIPTION | QTY. |
|----------|-------------|---|------|----------|-------------|---|------|
| 1A | 25014096 | Prong Weldment | 1 | 8 | 950-001-125 | Hex Head Cap Screw 1/2-13 x 1 1/2 Gr. 5 | 8 |
| 1B | 25014095 | Prong Weldment QH2 | 1 | 9 | 951-003-009 | Lock Nut 1/2-13 Nylon Insert | 12 |
| 2 | 25014097 | LH Front Bracket | 1 | 10 | 951-005-055 | Lock Nut 1/2-13 Mac Lock | 2 |
| 3 | 25014098 | RH Front Bracket | 1 | 11 | 952-004-067 | Flat Washer 1/2 Inch, Hardened | 4 |
| 4 | 25014099 | LH Rear Bracket Weldment | 1 | 12 | 950-001-132 | Hex Head Cap Screw 5/8-11 x 1 3/4 Gr. 5 | 8 |
| 5 | 25014100 | RH Rear Bracket Weldment | 1 | 13 | 060756 | Lock Nut 5/8-11 Nylon Insert | 8 |
| 6 | 950-001-271 | Hex Head Cap Screw 1/2-13 x 5 1/4 Gr. 8 | 2 | 14 | 25010008 | Hiniker Decal | 1 |
| 7 | 950-001-369 | Hex Head Cap Screw 1/2-13 x 4 1/2 Gr. 8 | 4 | | 25012829 | Bolt Bag | 1 |

All hardware should be tightened only enough to ensure safety during assembly. Fully tighten all hardware after entire assembly is completed.

GRADE 5 TYPE B & F LOCK NUT TORQUE VALUES

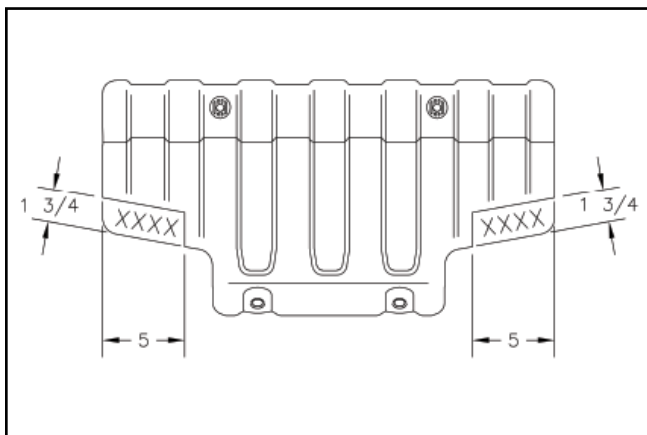
| Size | Ft-lbs. | N-m |
|-------|---------|---------|
| 5/16" | 13-18 | 17-25 |
| 3/8" | 23-33 | 31-44 |
| 1/2" | 58-82 | 79-112 |
| 5/8" | 117-165 | 158-223 |

GRADE 5 BOLT TORQUE VALUES*

| Size | Ft-lbs. | N-m |
|------|---------|---------|
| 1/4" | 8-12 | 11-16 |
| 3/8" | 29-41 | 39-56 |
| 1/2" | 73-103 | 99-140 |
| 5/8" | 146-206 | 198-279 |

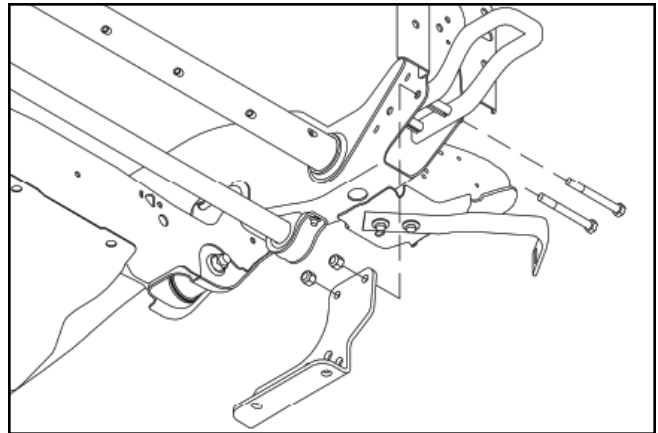
* applications without lock nuts

1. Prepare the truck for installation of the mount kit, as follows:
 - Detach the lower lip of the front bumper and return to vehicle owner with hardware. This will not be reinstalled.
 - Remove the front splash shield from behind the front bumper by unscrewing four bolts. Trim edges as illustrated.



DWG. NO. 7766

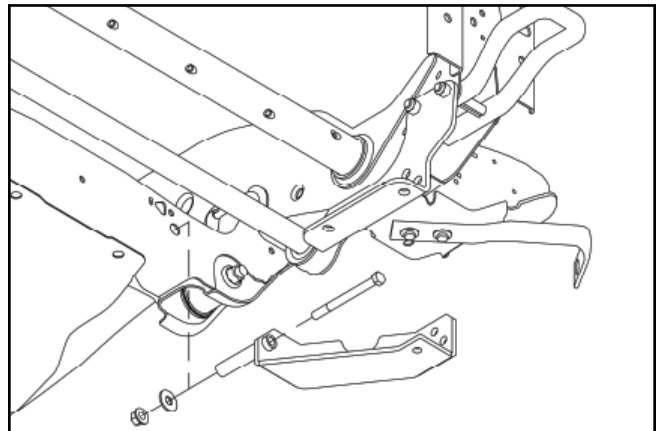
2. One bolt at a time, replace tow hook bolts with longer 1/2 inch x 4 1/2 inch bolts supplied with the mount kit.



DWG. NO. 7767

Install LH and RH Front Brackets onto bolts and secure with nylon insert lock nuts.

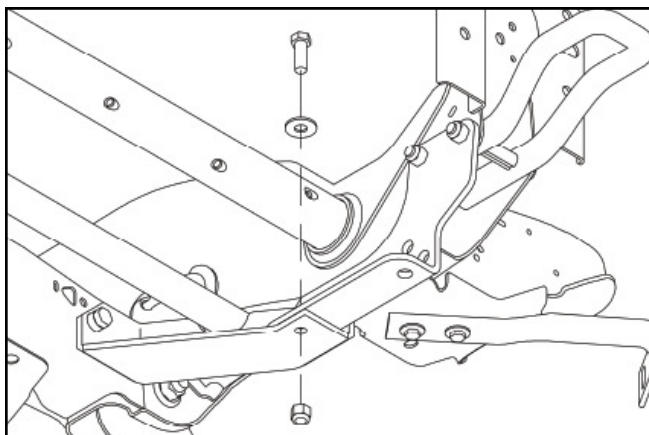
3. Identify the LH and RH rear bracket weldments. Insert a 1/2 inch x 5 1/4 inch hex bolt through the spacer bushing of each bracket from the front side of the bracket.



DWG. NO. 7768

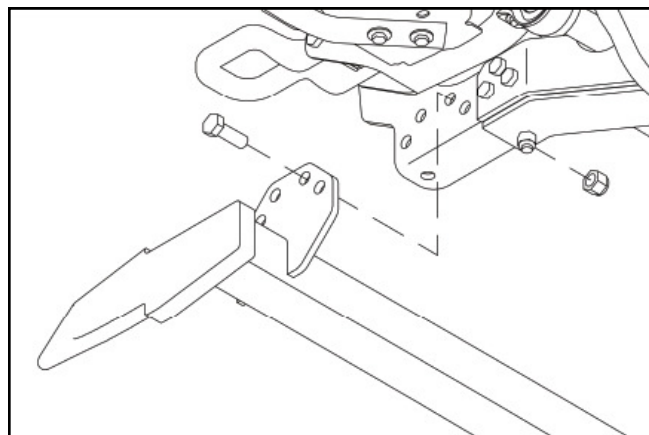
Slip spacer bushings through holes in the vehicle crossmember and loosely secure with 1/2 inch flat washers and flanged lock nuts from the bolt bag.

Position rear brackets up to the outside of the front brackets so the front holes of the rear brackets match rear holes of the front brackets.



DWG. NO. 7769

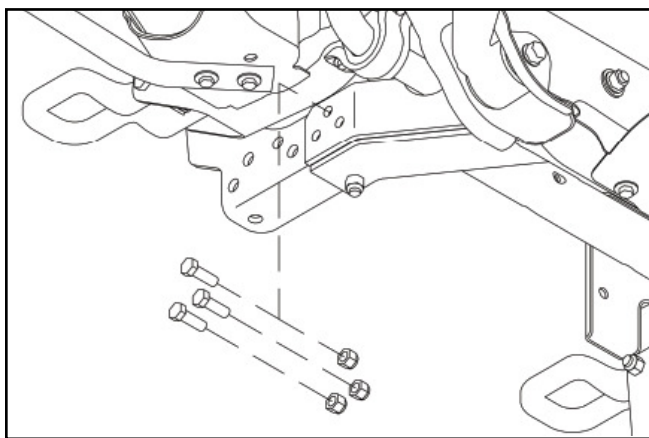
Fasten rear brackets to front brackets by first inserting a 1/2 inch x 1 1/2 inch hex bolt with a flat washer under its head from the top down through holes in brackets. Secure with nylon insert lock nuts.



DWG. NO. 7771

Bottom edges of the prongs should measure about 10 inches above the ground.

5. Fully tighten all hardware to specified torque values.
6. Reinstall the modified front splash shield with original hardware.



DWG. NO. 7770

Install three 1/2 inch x 1 1/2 inch hex bolts through side holes and secure with lock nuts to complete the attachment.

4. Bolt the prong weldment plates outside of brackets on the truck with four 5/8 inch x 1 3/4 inch hex bolts and lock nuts per side.